

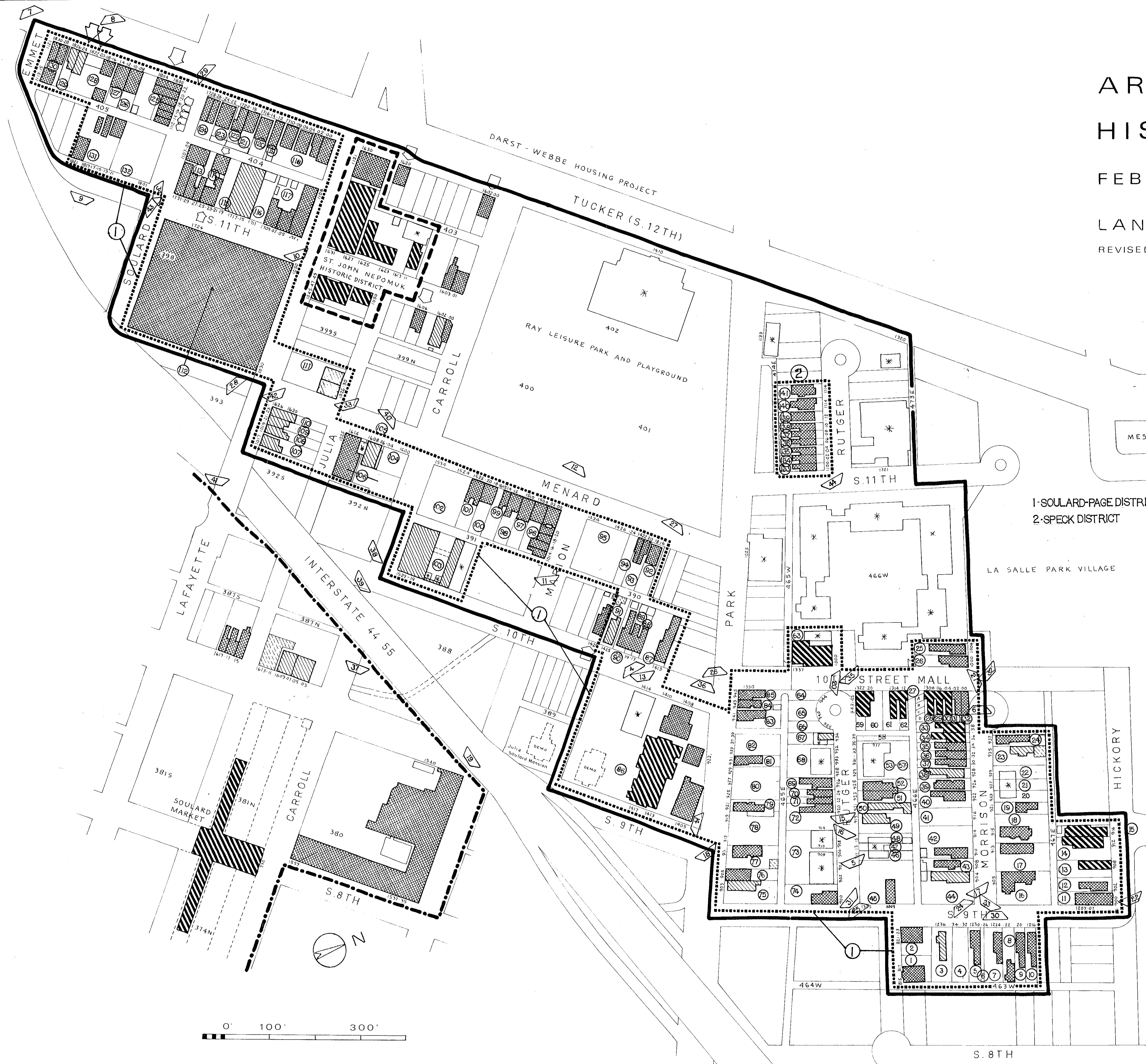
# ARCHITECTURAL SURVEY OF HISTORIC LA SALLE PARK

FEBRUARY 1977

ST. LOUIS, MISSOURI

LANDMARKS ASSOCIATION OF ST. LOUIS, INC.

REVISED: NOVEMBER 1979  
MARCH 1980  
JANUARY 1982  
APRIL 1982  
MARCH 1983



- LEGEND:
- NATIONAL SIGNIFICANCE
  - ▨ STATE SIGNIFICANCE
  - ▧ CITY SIGNIFICANCE
  - LITTLE OR NO ARCHITECTURAL MERIT -  
DEMOLITION WOULD BE INCONSEQUENTIAL  
OR ADVANTAGEOUS
  - LISTED ON THE NATIONAL REGISTER OF HISTORIC PLACES
  - ..... NOMINATED TO THE NATIONAL REGISTER OF HISTORIC PLACES
  - MULTIPLE RESOURCE BOUNDARY
  - \* BUILT AFTER 1941
  - LOCAL HISTORIC DISTRICT
  - DEMOLISHED SINCE JANUARY 1982
  - OWNER OF RECORD
  - CAMERA ANGLE & PHOTO NUMBER

**RALSTON PURINA CO.  
WORLD HEADQUARTERS**

SURVEY:  
CAROLYN HEWES TOFT  
JANE MOLLOY PORTER

REVIEW:  
GERHARDT KRAMER  
KARL D. PETTIT III  
WILLIAM P WISCHMEYER

MAP:  
PAT HAYS BAER

RATINGS REFLECT CURRENT ARCHITECTURAL NOT  
HISTORICAL OR ASSOCIATIVE SIGNIFICANCE.  
ALTHOUGH BUILDING CONDITIONS PER SE ARE NOT  
EVALUATED, INSENSITIVE ALTERATIONS AND/OR THE  
LOSS OF ARCHITECTURAL ELEMENTS MAY LOWER  
RATINGS. THIS SURVEY IS REVISED PERIODICALLY  
TO NOTE DEMOLITIONS AND ASSESS RENOVATION.

