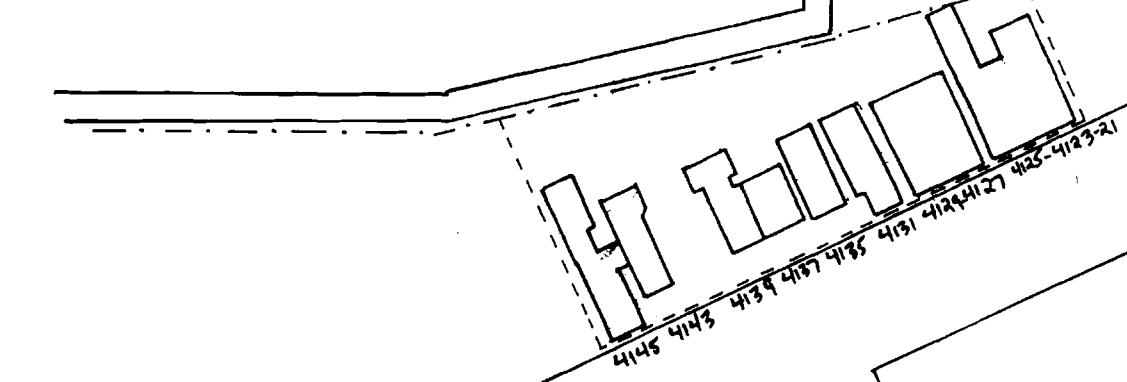
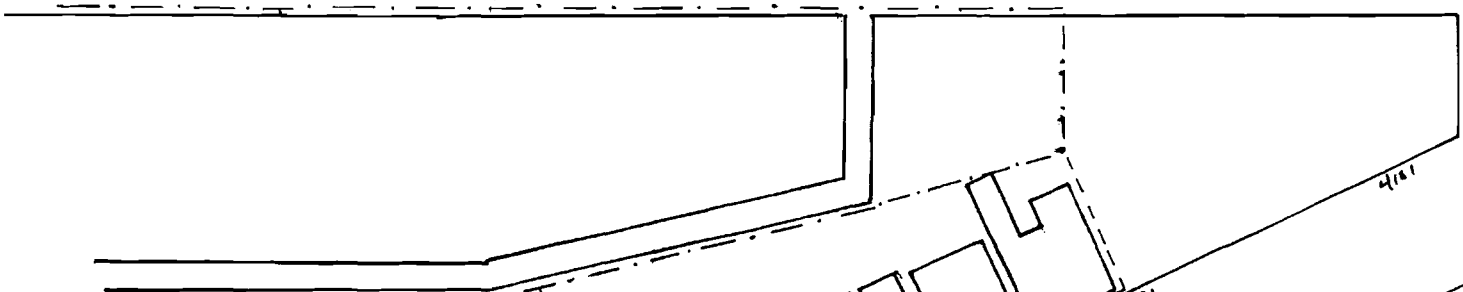




CHOUTEAU AVE.

S. SARAH

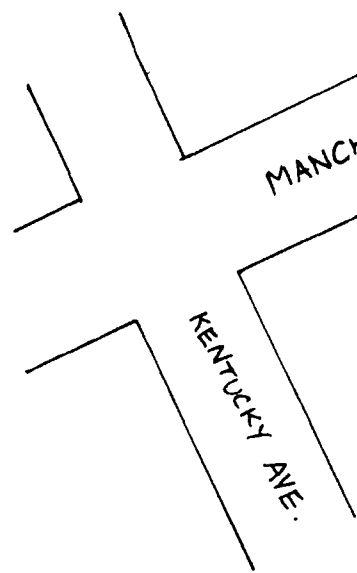


MANCHESTER AVE.

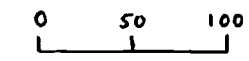
TALMAGE AVE.

FOREST PARK SOUTHEAST  
HISTORIC DISTRICT  
BOUNDARY INCREASE No. 2

DRAWN BY:  
SHEILA FINDALL  
4/18/06



KENTUCKY AVE.



APPROX. SCALE  
OF FEET



BOUNDARY FOR FPSE  
HISTORIC DISTRICT  
---  
BOUNDARY INCREASE  
No. 2 FOR FPSE  
HISTORIC DISTRICT  
---

# FOREST PARK SOUTHEAST HISTORIC DISTRICT BOUNDARY INCREASE No. 2

DRAWN BY:  
SHEILA FINDALL  
4/18/06

