

MISSOURI
DEPARTMENT OF
NATURAL RESOURCES

Total Maximum Daily Load Information Sheet

Salt Fork

Water Body ID: 0893

Water Body Segment at a Glance:

County: Saline
Nearby City: Marshall
Length: 26.7
Pollutants: Low dissolved oxygen
Source:



Schedule for TMDL development:

TMDL development schedules are subject to change.

The most current schedule for TMDL development is available on the department's website at dnr.mo.gov/env/wpp/tmdl/wpc-tmdl-progress.htm

Description of the Problem

A water body is considered impaired when it fails to meet applicable water quality standards. Water quality standards consist of designated uses, water quality criteria, an antidegradation policy and implementation procedures. Salt Fork is impaired due to exceedances of state water quality criteria that protect aquatic life.

Designated uses of Salt Fork*

- Warm Water Habitat (WWH)
- Whole Body Contact Recreation Category B (WBC-B)
- Secondary Contact Recreation (SCR)
- Human Health Protection (HHP)
- Irrigation (IRR)
- Livestock and Wildlife Protection (LWP)

*In addition to these specific uses, all waters of the state are protected by the general water quality criteria that are specified in the state's Water Quality Standards at 10 CSR 20-7.031(4).

Designated uses that are impaired

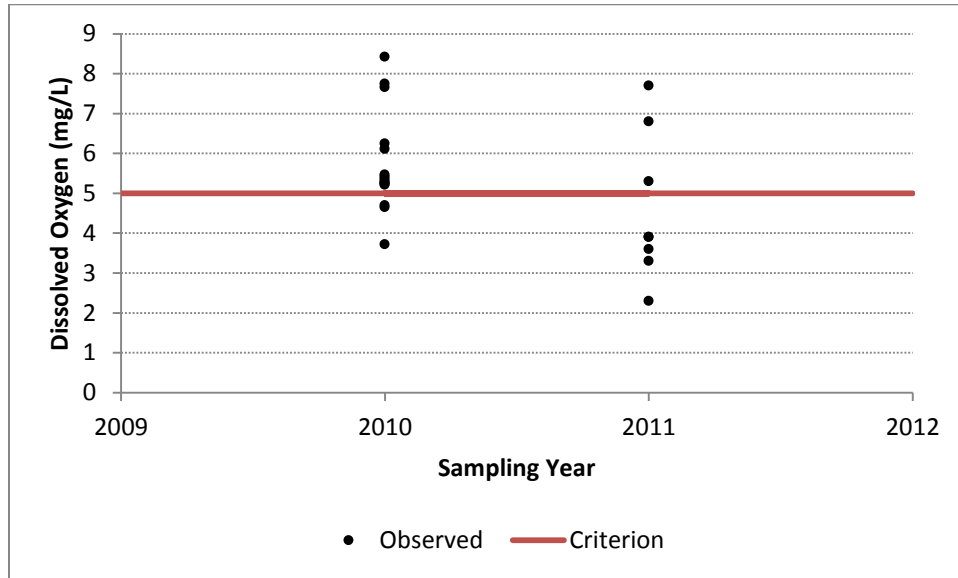
- Warm Water Habitat (WWH)

Criteria that apply

- In the Missouri Water Quality Standards at 10 CSR 20-7.031 Table A, the criterion for dissolved oxygen for warm water fisheries is a minimum of 5 milligrams per liter (mg/L).

Assessment and water quality data

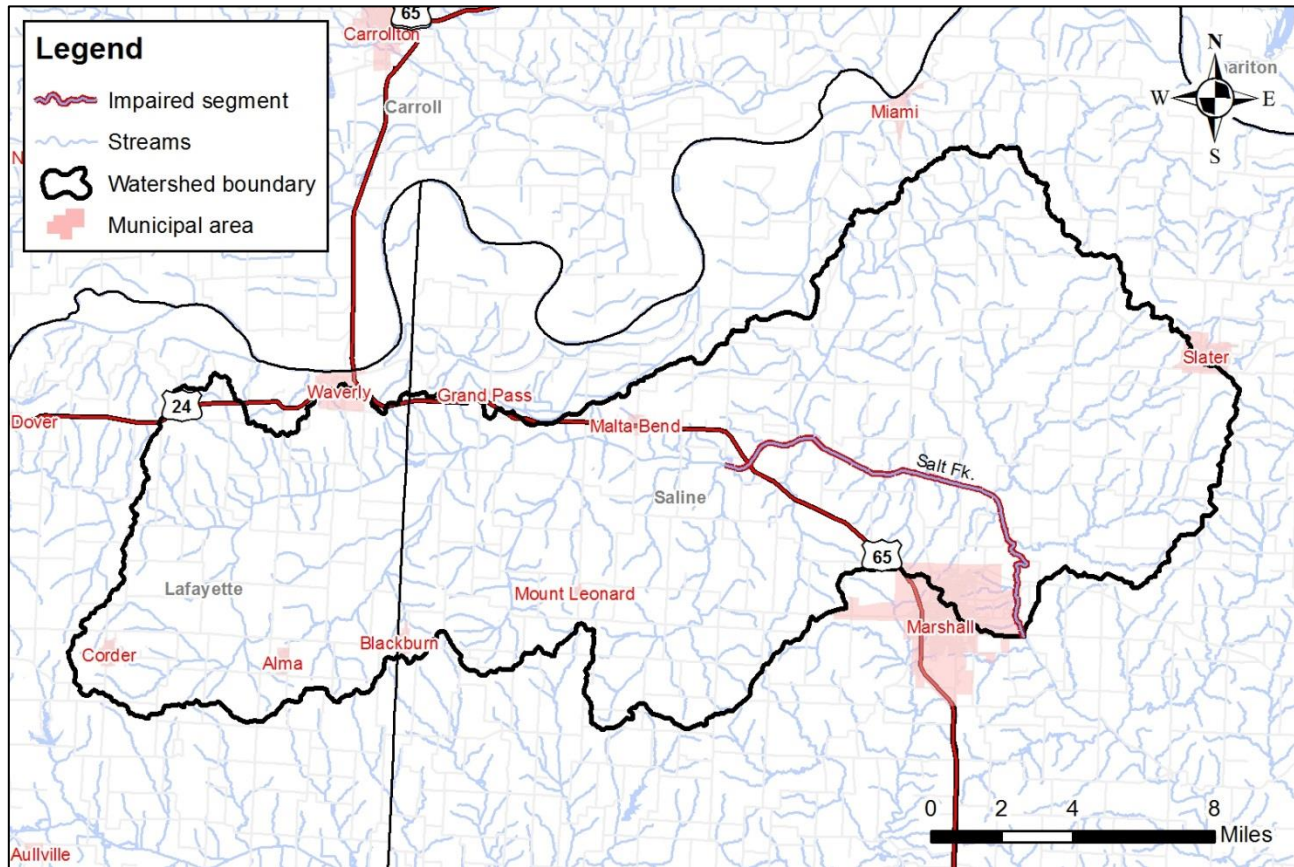
The department judges a stream to be impaired due to low dissolved oxygen if more than 10 percent of measurements fail to meet the water quality criterion. For Salt Fork, eight of 24 measurements, or 33 percent, fall below the minimum dissolved oxygen criterion.



TMDL for Salt Fork

The Salt Fork TMDL will calculate the maximum amount of each listed pollutant that the stream can receive and still meet water quality standards. The TMDL will also identify all potential or suspected pollutant sources in the watershed and distribute the allowable pollutant loads among those various sources. When developed, the Salt Fork TMDL will use the most current and available data. For this reason, the final TMDL may present information that differs from that contained in this information sheet.

Map of the Salt Fork Watershed



For more information call or write:
Department of Natural Resources
Water Protection Program – Watershed Protection Section
P.O. Box 176
Jefferson City, MO 65102-0176
Ph: 1-800-361-4827 or 573-751-1300
Fax: 573-526-6802
Email: TMDL@dnr.mo.gov
Program Home Page: dnr.mo.gov/env/wpp/index.html