

**MISSOURI**  
DEPARTMENT OF  
NATURAL RESOURCES

## Total Maximum Daily Load Information Sheet

### Williams Creek

Water Body ID: 3594

---

#### Water Body Segment at a Glance:

**County:** St. Louis  
**Nearby City:** Valley Park  
**Segment Length:** 1 mile  
**Watershed Size:** 9.5 square miles  
**Pollutant:** Bacteria  
**Source:** Urban and rural runoff



Statewide Map Showing Location of Watershed

#### Schedule for TMDL development:

TMDL development schedules are subject to change.

The most current schedule for TMDL development is available on the department's website at [dnr.mo.gov/env/wpp/tmdl/wpc-tmdl-progress.htm](http://dnr.mo.gov/env/wpp/tmdl/wpc-tmdl-progress.htm)

---

### Description of the Problem

A water body is considered impaired when it fails to meet applicable water quality standards. Water quality standards consist of designated uses, water quality criteria, an antidegradation policy and implementation procedures. Williams Creek is impaired due to exceedances of the state water quality criterion that protects the whole body contact recreation category B designated use.

#### Designated uses of Williams Creek

- Warm Water Habitat (WWH)
- Whole Body Contact Recreation Category B (WBC-B)
- Secondary Contact Recreation (SCR)
- Human Health Protection (HHP)
- Irrigation (IRR)
- Livestock and Wildlife Protection (LWP)

\* In addition to these specific uses, all waters of the state are protected by the general water quality criteria that are specified in the state's Water Quality Standards at 10 CSR 20-7.031(4).

#### Designated Use that is Impaired

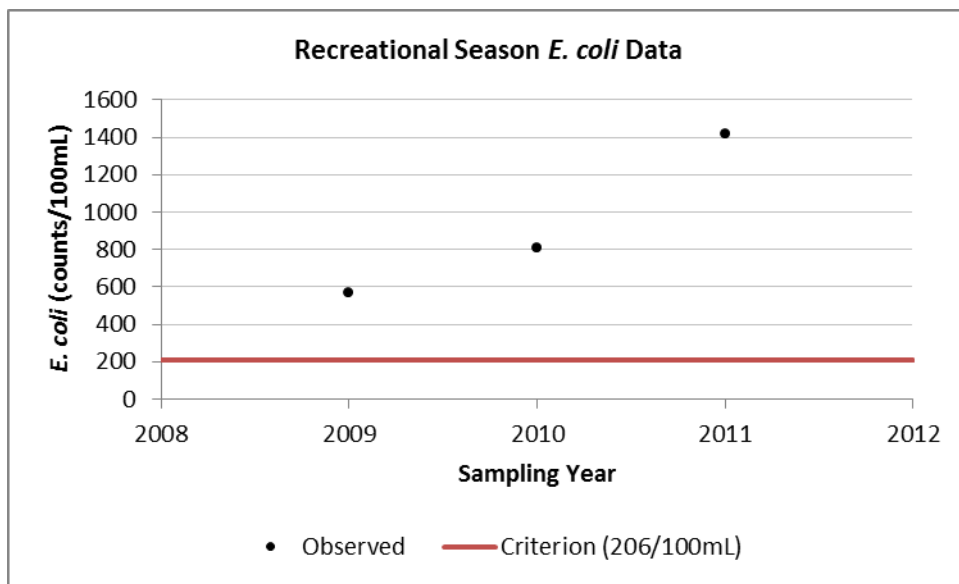
- Whole Body Contact Recreation – Category B

### Criteria that Apply

- Missouri's Water Quality Standards at 10 CSR 20-7.031(5)(C) and Table A state that the *E. coli* bacteria count for category B waters, measured as a geometric mean, shall not exceed 206 colonies per 100 milliliters of water (206 col/100 mL) during the recreational season. The recreational season is defined as being from April 1 through October 31.

### Background information and water quality data

Williams Creek is located in southern St. Louis County and is a tributary to the Meramec River. The department judges a stream to be impaired by bacteria if the applicable water quality criterion for *E. coli* is exceeded in any of the last three years for which there is a minimum of five samples taken during the recreational season. Sufficient bacteria data is available for the 2009, 2010 and 2011 recreational seasons. The geometric mean criterion was exceeded in all three years.



### TMDL for Williams Creek

The Williams Creek TMDL will calculate the maximum amount of each listed pollutant that the stream can receive and still meet water quality standards. The TMDL will also identify all potential or suspected pollutant sources in the watershed and distribute the allowable pollutant loads among those various sources. When developed, the Williams Creek TMDL will use the most current and available data. For this reason, the final TMDL may present information that differs from that contained in this information sheet.

### For more information call or write:

Department of Natural Resources  
Water Protection Program – Watershed Protection Section  
P.O. Box 176  
Jefferson City, MO 65102-0176  
Ph: 1-800-361-4827 or 573-751-1300  
Fax: 573-526-6802  
Email: [TMDL@dnr.mo.gov](mailto:TMDL@dnr.mo.gov)  
Program Home Page: [dnr.mo.gov/env/wpp/index.html](http://dnr.mo.gov/env/wpp/index.html)

# Map Showing the Williams Creek Watershed

