



Total Maximum Daily Load Information Sheet

Lee Rowe Ditch

Water Body ID: 3137

Water Body Segment at a Glance:

County: Mississippi
Nearby City: East Prairie
Length: 6 miles
Pollutants: Low dissolved oxygen
Source: Unknown



Scheduled for TMDL development:

TMDL development schedules are subject to change.

The most current schedule for TMDL development is available on the department's website at dnr.mo.gov/env/wpp/tmdl/wpc-tmdl-progress.htm

Description of the Problem

A water body is considered impaired when it fails to meet applicable water quality standards. Water quality standards consist of designated uses, water quality criteria, an antidegradation policy and implementation procedures. Lee Rowe Ditch is impaired due to exceedances of water quality criteria that protect aquatic life.

Designated uses of Lee Rowe Ditch*

- Warm Water Habitat (WWH)
- Whole Body Contact Recreation Category B (WBC-B)
- Secondary Contact Recreation (SCR)
- Human Health Protection (HHP)
- Irrigation (IRR)
- Livestock and Wildlife Protection (LWP)

*In addition to these specific uses, all waters of the state are protected by the general water quality criteria that are specified in the state's Water Quality Standards at 10 CSR 20-7.031(4).

Use that is impaired

- Warm Water Habitat (WWH)

Criteria that apply

- The dissolved oxygen criterion applicable to Lee Rowe Ditch is found in Table A of Missouri’s Water Quality Standards at 10 CSR 20-7.031. Table A states that the minimum allowable dissolved oxygen concentration for waters designated as Warm Water Habitat is 5 milligrams per liter (mg/L).

Assessment and water quality data

A water is judged to be impaired due to low dissolved oxygen if 10 percent or more of available dissolved oxygen measurements fall below the water quality criterion. Dissolved oxygen data was collected from Lee Rowe Ditch in 2009 and two of six samples, or 30 percent, were found to have dissolved oxygen concentrations lower than the minimum criterion.

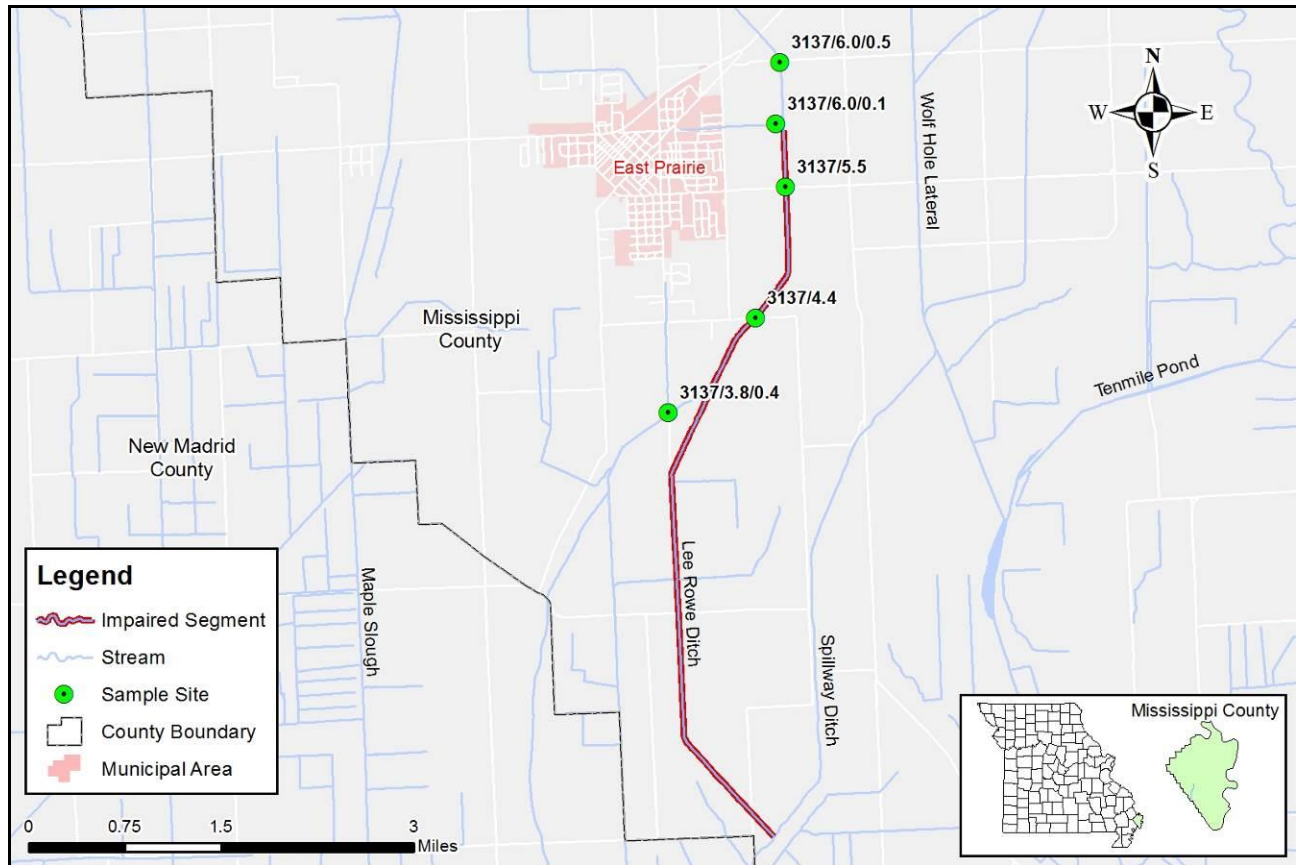
Dissolved Oxygen Data

<i>Site</i>	<i>Site Name</i>	<i>Yr</i>	<i>Mo</i>	<i>Dy</i>	<i>Time</i>	<i>DO</i>
3137/6.0/0.5	Lee Rowe Ditch 0.5 miles above E. Prairie wastewater treatment plant	2009	7	9	1430	9.8
3137/6.0/0.5	Lee Rowe Ditch 0.5 miles above E. Prairie wastewater treatment plant	2009	7	10	643	3.6
3137/5.5	Lee Rowe Ditch at Highway 80	2009	7	9	1355	>20
3137/5.5	Lee Rowe Ditch at Highway 80	2009	7	10	620	2.4
3137/4.4	Lee Rowe Ditch at County Road 525	2009	7	9	1345	5.5
3137/4.4	Lee Rowe Ditch at County Road 525	2009	7	10	610	6.8

TMDL for Lee Rowe Ditch

The Lee Rowe Ditch TMDL will calculate the maximum amount of each listed pollutant that the stream can receive and still meet water quality standards. The TMDL will also identify all potential or suspected pollutant sources in the watershed and distribute the allowable pollutant loads among those various sources. When developed, the Lee Rowe Ditch TMDL will use the most current and available data. For this reason, the final TMDL may present information that differs from that contained in this information sheet.

Map Showing Lee Rowe Ditch and Sample Sites



For more information call or write:

Department of Natural Resources
Water Protection Program – Watershed Protection Section
P.O. Box 176
Jefferson City, MO 65102-0176
Ph: 1-800-361-4827 or 573-751-1300
Fax: 573-526-6802
Email: TMDL@dnr.mo.gov
Program Home Page: dnr.mo.gov/env/wpp/index.html