

MISSOURI
DEPARTMENT OF
NATURAL RESOURCES

Total Maximum Daily Load Information Sheet

Ditch #36

Water Body ID: 3109

Water Body Segment at a Glance:

County: Dunklin
Nearby City: Kennett
Length: 7.8 miles
Pollutant: Low Dissolved Oxygen
Source: Unknown



State Map Showing Location of Watershed

Scheduled for TMDL development:

TMDL development schedules are subject to change.

The most current schedule for TMDL development is available on the department's website at dnr.mo.gov/env/wpp/tmdl/wpc-tmdl-progress.htm.

Description of the Problem

A water body is considered impaired when it fails to meet applicable water quality standards. Water quality standards consist of designated uses, water quality criteria, an antidegradation policy and implementation procedures. Ditch #36 is impaired due to exceedances of water quality criteria for the protection of aquatic life.

Designated uses of Ditch #36*

- Warm Water Habitat (WWH)
- Whole Body Contact Recreation Category B (WBC-B)
- Secondary Contact Recreation (SCR)
- Human Health Protection (HHP)
- Irrigation (IRR)
- Livestock and Wildlife Protection (LWP)

*In addition to these specific uses, all waters of the state are protected by the general water quality criteria that are specified in the state's Water Quality Standards at 10 CSR 20-7.031(4).

Designated use that are impaired

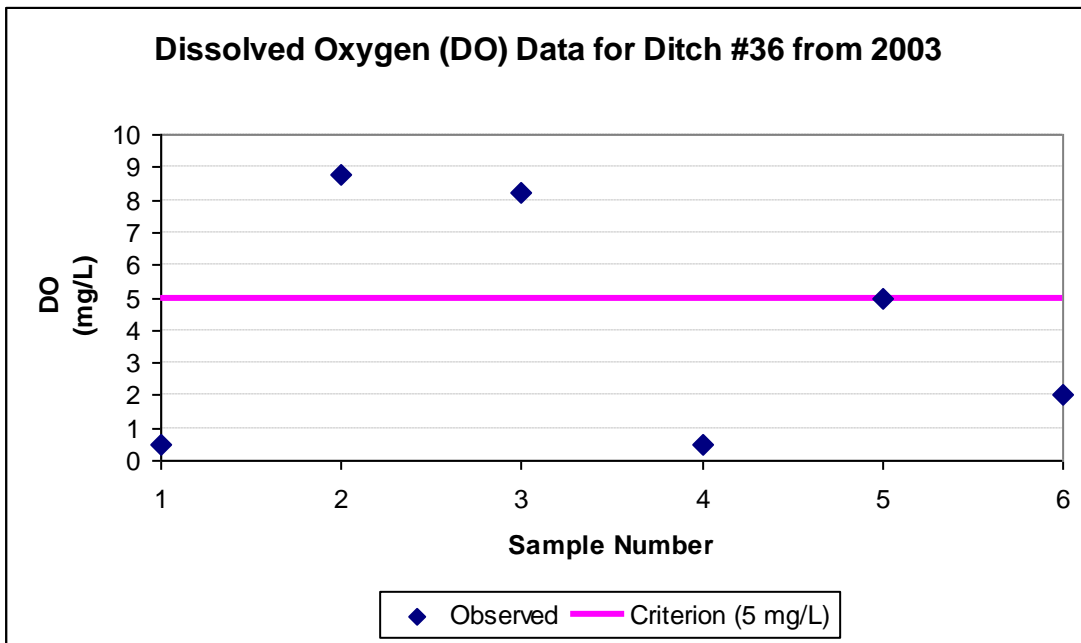
- Warm Water Habitat (WWH)

Criteria that apply

The dissolved oxygen criterion applicable to Ditch #36 is found in Table A of Missouri’s Water Quality Standards at 10 CSR 20.7.031. Table A states that the minimum allowable dissolved oxygen concentration for the protection of aquatic life in warm water habitats is a minimum 5 milligrams per liter (mg/L).

Background information and water quality data

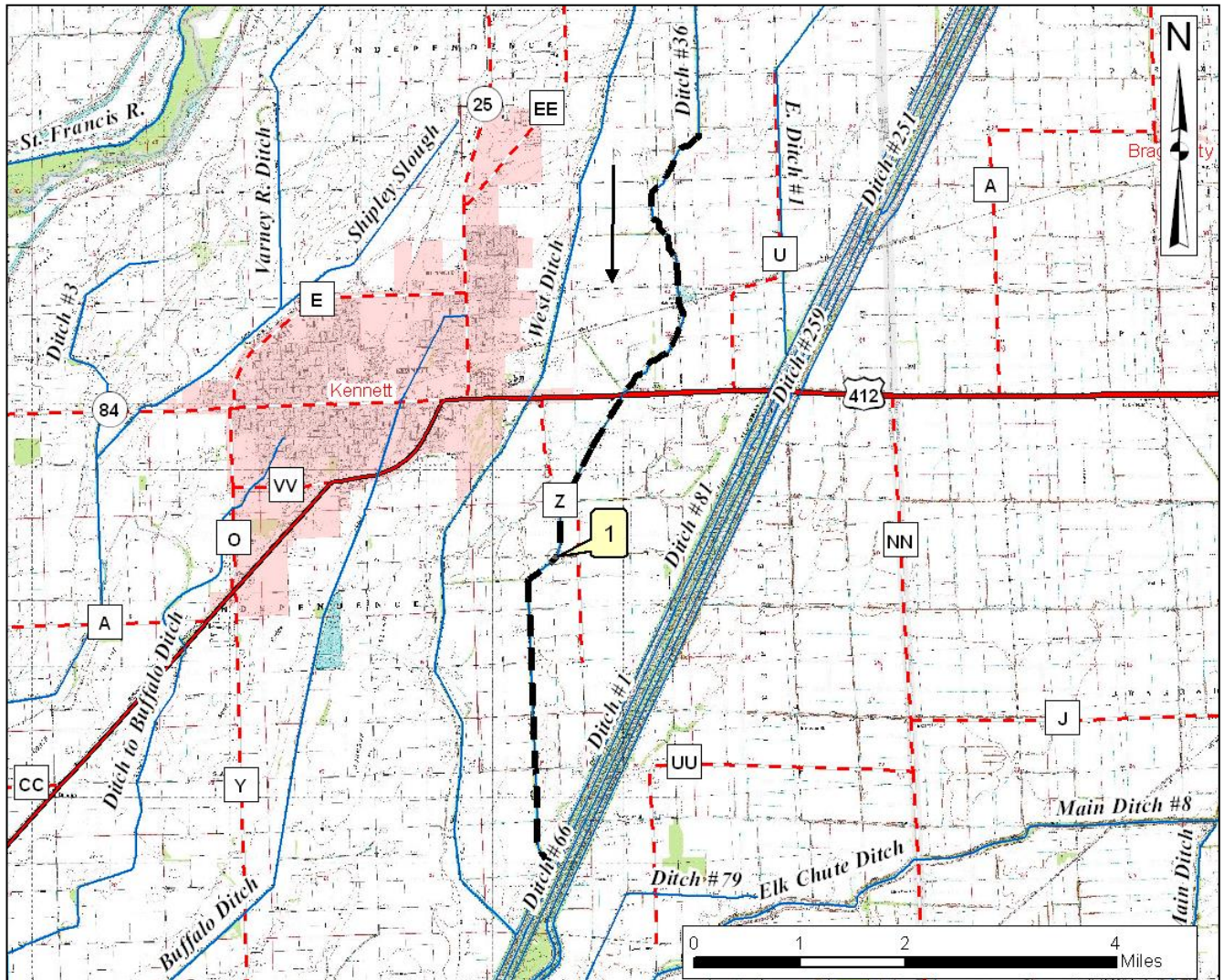
Ditch #36 is in Missouri’s bootheel, a low-lying area between the Mississippi and St. Francis rivers. Dissolved oxygen levels in Ditch #36 do not always meet the water quality criterion of 5 mg/L. Dissolved oxygen is important as many aquatic organisms require high levels of oxygen to survive. For dissolved oxygen, if more that 10 percent of measurements in a water body fail to meet the water quality criterion, that water body is judged to be impaired. In the case of Ditch #36, three of six samples (50 percent) for dissolved oxygen gathered by the department during low flow studies in July and Aug. 2003 did not meet the water quality criterion.



TMDL for Ditch #36

The Ditch #36 TMDL will calculate the maximum amount of each listed pollutant that the stream can receive and still meet water quality standards. The TMDL will also identify all potential or suspected pollutant sources in the watershed and distribute the allowable pollutant loads among those various sources. When developed, the Ditch #36 TMDL will use the most current and available data. For this reason, the final TMDL may present information that differs from that contained in this information sheet.

Map Showing Ditch #36 in Dunklin County and Sampling Site



— — — — Impaired Segment

—————> Direction of flow

Sample Site
1 – Ditch #36 at County Road 502

For more information call or write:

Department of Natural Resources
 Water Protection Program – Watershed Protection Section
 P.O. Box 176
 Jefferson City, MO 65102-0176
 Ph: 1-800-361-4827 or 573-751-1300
 Fax: 573-526-6802
 Email: TMDL@dnr.mo.gov
 Program Home Page: dnr.mo.gov/env/wpp/index.html