

MISSOURI
DEPARTMENT OF
NATURAL RESOURCES

Total Maximum Daily Load Information Sheet

Little Whitewater River

Water Body ID: 2229

Water Body Segment at a Glance:

Counties:	Cape Girardeau and Bollinger
Nearby City:	Sedgewickville
Length:	24.2 miles
Watershed Size:	92.7 square miles
Pollutant:	Aquatic Macroinvertebrate Bioassessments
Source:	Unknown



Statewide Map Showing Location of Watershed

Scheduled for TMDL development:

TMDL development schedules are subject to change.

The most current schedule for TMDL development is available on the department's website at

dnr.mo.gov/env/wpp/tmdl/wpc-tmdl-progress.htm

Description of the Problem

A water body is considered impaired when it fails to meet applicable water quality standards. Water quality standards consist of designated uses, water quality criteria, an antidegradation policy and implementation procedures. The Little Whitewater River is impaired due to exceedances of water quality criteria for the protection of aquatic life.

Designated uses of Little Whitewater River*

- Warm Water Habitat (WWH)
- Whole Body Contact Recreation Category A (WBC-A)
- Secondary Contact Recreation (SCR)
- Human Health Protection (HHP)
- Irrigation (IRR)
- Livestock and Wildlife Protection (LWP)

*In addition to these specific uses, all waters of the state are protected by the general water quality criteria that are specified in the state's Water Quality Standards at 10 CSR 20-7.031(4).

Designated use that are impaired

- Warm Water Habitat (WWH)
- General criteria

Criteria that apply

The state’s general water quality criteria at 10 CSR 20-7.031(4) are applicable to all waters of the state at all times. No water contaminant, by itself or in combination with other substances, shall prevent the waters of the state from meeting the following conditions:

- Waters shall be free from substances or conditions in sufficient amounts to result in toxicity to human, animal, or aquatic life [10 CSR 20-7.031(4)(D)].
- Waters shall be free from physical, chemical, or hydrologic changes that would impair the natural biological community [10 CSR 20-7.031(4)(G)].

Assessment and water quality data

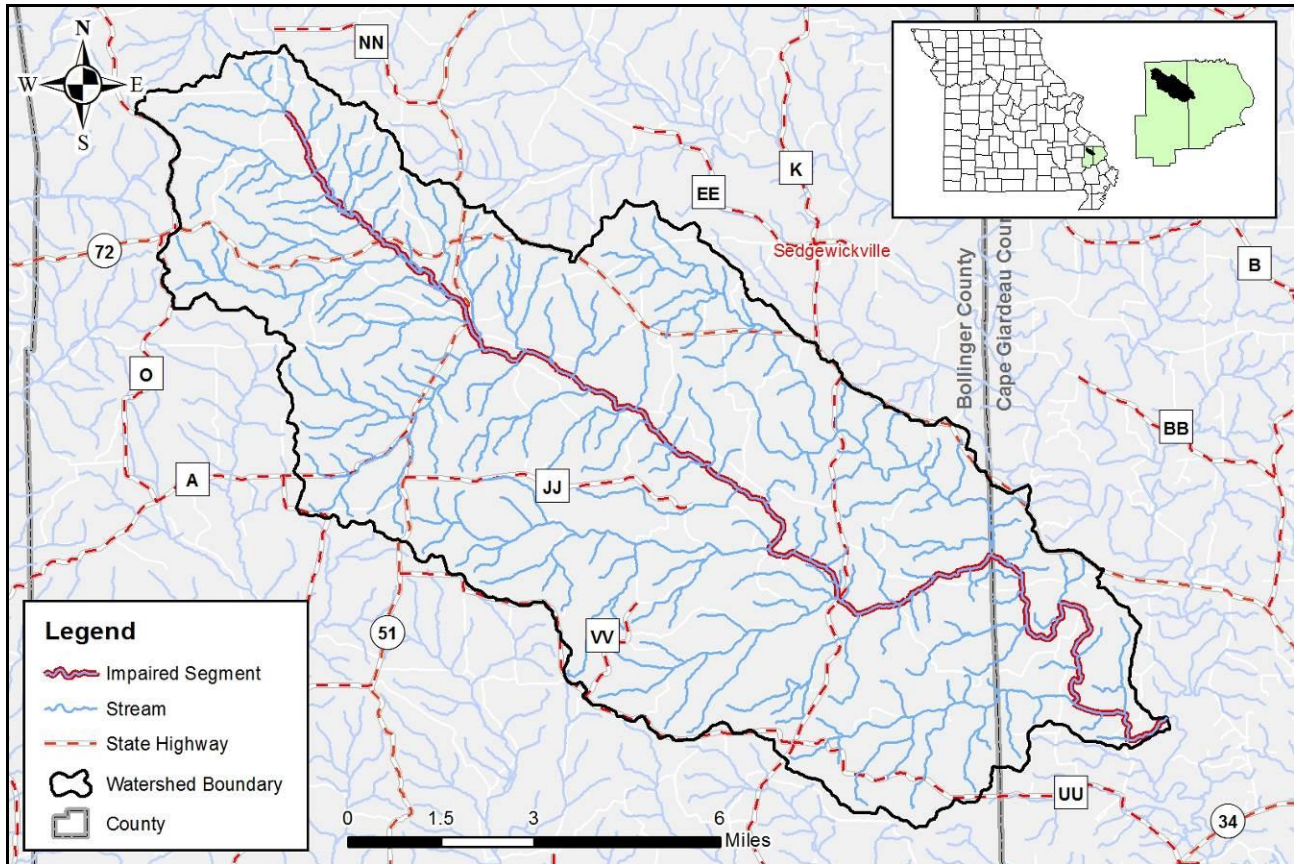
Aquatic invertebrate samples were collected from the Little Whitewater River in 1999 and 2000. These samples were analyzed and a score was determined to indicate the health of the aquatic community based on the numbers and types of species present. Scores of 16 or greater are considered healthy and reflect an unimpaired condition. Scores less than 16 indicate an impaired condition, which may be caused by toxicity or habitat issues within the waterway. Additional monitoring is often necessary to determine if the cause of the low scores is due to a chemical or physical condition.

Invertebrate communities are judged to be impaired if the percent of sampling sites receiving a score of 16 or more is significantly less than for reference streams within the same ecological drainage unit. If there are seven or fewer samples, as in the case of the Little Whitewater River, the department judges a stream as impaired if at least 75 percent of the samples score less than 16. For the Little Whitewater River, three of the four samples scored less than 16.

Aquatic Invertebrate Monitoring Data

<i>Sampling Organization</i>	<i>Sampling Site</i>	<i>Sampling Location</i>	<i>Date</i>	<i>Score</i>
MoDNR	2229/17.7	L. Whitewater R. at Dalton Ford	Spring 1999	14
MoDNR	2229/17.7	L. Whitewater R. at Dalton Ford	Fall 1999	12
MoDNR	2229/17.7	L. Whitewater R. at Dalton Ford	Spring 2000	16
MoDNR	2229/17.7	L. Whitewater R. at Dalton Ford	Fall 2000	12

Map of the Little Whitewater River Watershed



TMDL for the Little Whitewater River

The Little Whitewater River TMDL will calculate the maximum amount of each listed pollutant that the stream can receive and still meet water quality standards. The TMDL will also identify all potential or suspected pollutant sources in the watershed and distribute the allowable pollutant loads among those various sources. When developed, the Little Whitewater River TMDL will use the most current and available data. For this reason, the final TMDL may present information that differs from that contained in this information sheet.

For more information call or write:

Department of Natural Resources
Water Protection Program – Watershed Protection Section
P.O. Box 176
Jefferson City, MO 65102-0176
Ph: 1-800-361-4827 or 573-751-1300
Fax: 573-526-6802
Email: TMDL@dnr.mo.gov
Program Home Page: dnr.mo.gov/env/wpp/index.html