



MISSOURI
DEPARTMENT OF
NATURAL RESOURCES

Total Maximum Daily Load Information Sheet

Little Dry Fork, Dutro Carter Creek and Burgher Branch Water Body IDs: 1863, 1864, 3569, and 1865

Water Body Segment at a Glance:

County: Phelps
Nearby City: Rolla
Length: Little Dry Fork (1863) – 5.2 miles
Little Dry Fork (1864) – 4.7 miles
Dutro Carter Creek (3569) – 1.5 miles
Burgher Branch (1865) – 2 miles
Pollutant: Low Dissolved Oxygen
Sources: Rolla SE Wastewater Treatment Plant
and unknown



State Map Showing Location of Watershed

Scheduled for TMDL development:

TMDL development schedules are subject to change.

The most current schedule for TMDL development is available on the department's website at dnr.mo.gov/env/wpp/tmdl/wpc-tmdl-progress.htm

Description of the Problem

A water body is considered impaired when it fails to meet applicable water quality standards. Water quality standards consist of designated uses, water quality criteria, an antidegradation policy and implementation procedures. These streams are impaired due to exceedances of water quality criteria that protect aquatic life.

Designated uses*

- Warm Water Habitat (WWH)
- Whole Body Contact Recreation Category B (WBC-B)
- Secondary Contact Recreation (SCR)
- Human Health Protection (HHP)
- Irrigation (IRR)
- Livestock and Wildlife Protection (LWP)

*In addition to these specific uses, all waters of the state are protected by the general water quality criteria that are specified in the state's Water Quality Standards at 10 CSR 20-7.031(4).

Designated use that are impaired

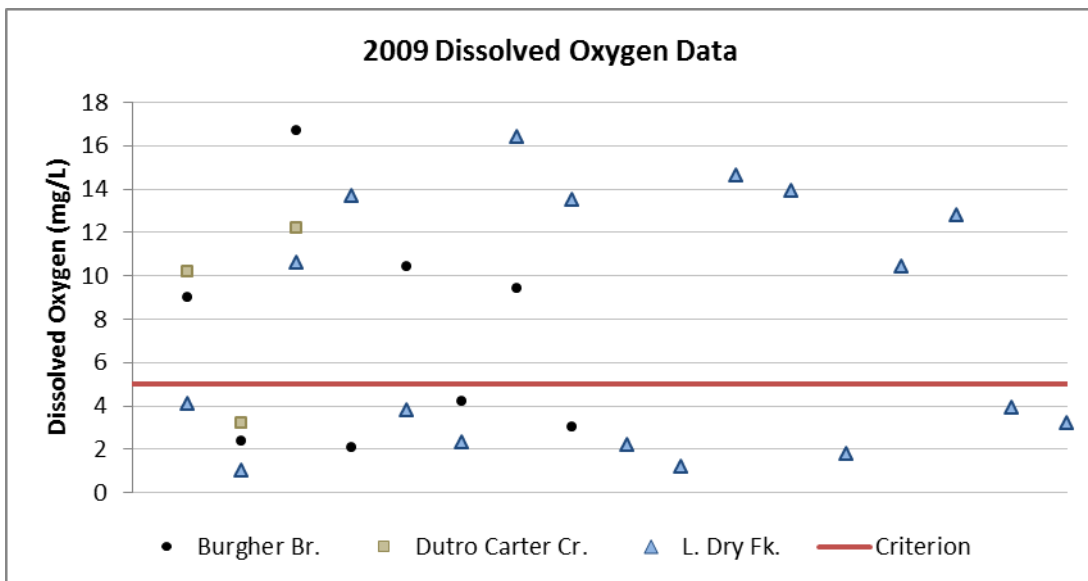
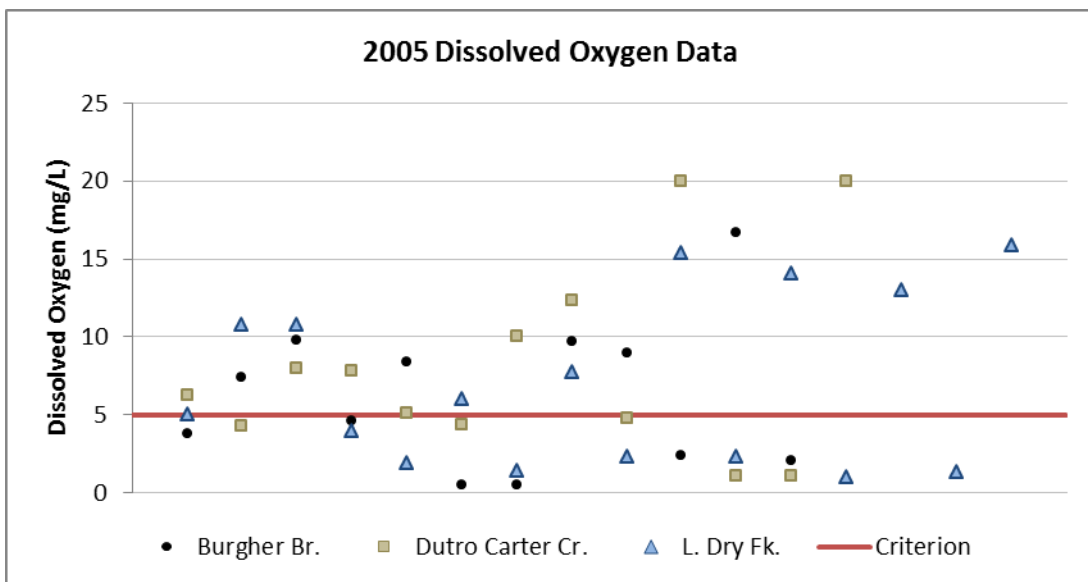
- Warm Water Habitat (WWH)

Criteria that apply

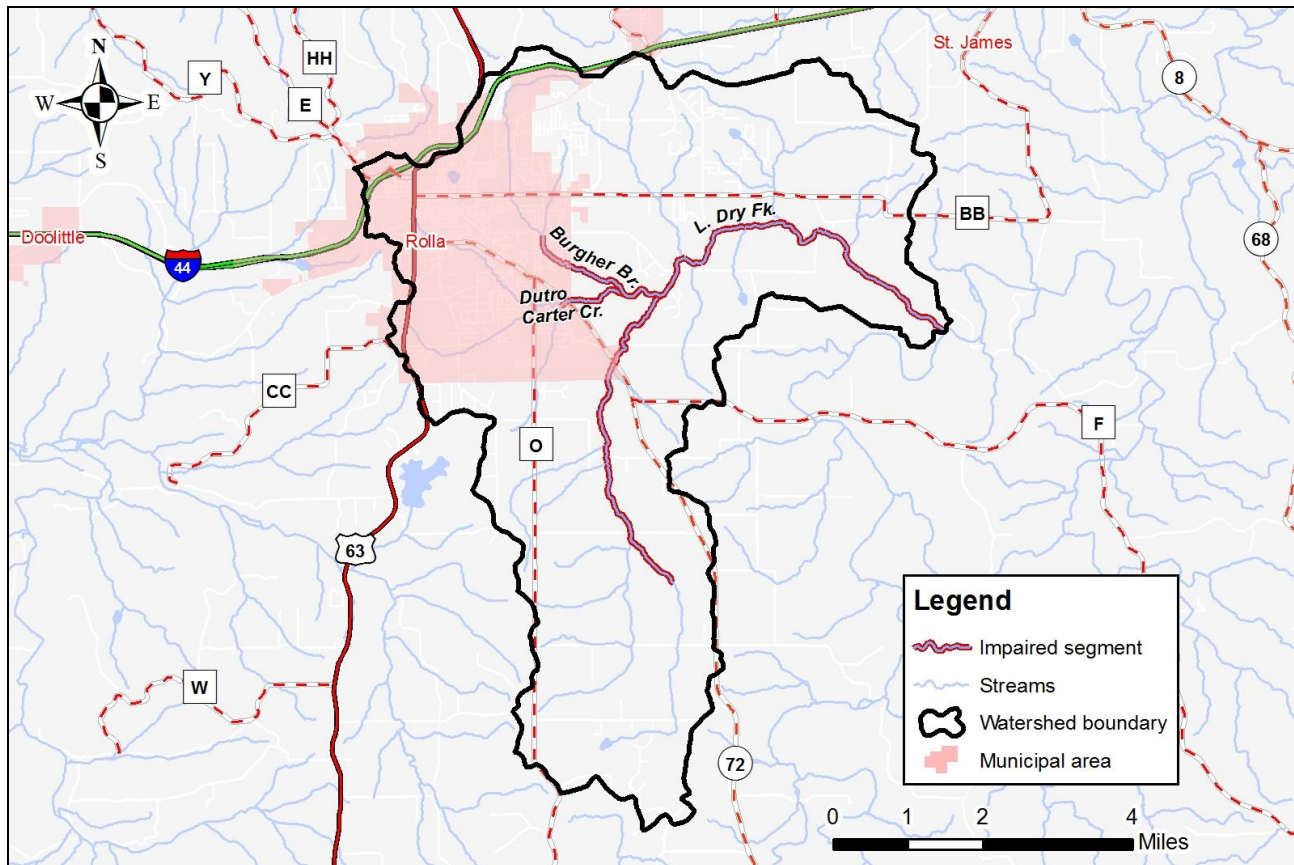
- The Missouri water quality criterion found in 10 CSR 20-7.031 Table A, for dissolved oxygen is a minimum of 5 milligrams per liter (mg/L).

Background information and Water Quality Data

Water quality conditions in these streams are not protective of aquatic life. The department conducted two low flow water quality studies on these streams in 2005 and again in 2009. All three streams, including sites upstream of the Rolla SE WWTP, had multiple dissolved oxygen measurements that failed to meet the criterion. For dissolved oxygen, if more than 10 percent of measurements in a water body fail to meet the water quality criterion, that water body is judged to be impaired. In Little Dry Fork, 18 of 37 samples (48.6 percent) did not meet the criterion. In Dutro Carter Creek, eight of 20 samples (40 percent) did not meet the criterion. And in Burgher Branch, six of 23 samples (26 percent) did not meet the criterion.



Map of the Little Dry Fork Watershed



TMDL for Little Dry Fork, Dutro Carter Creek, and Burgher Branch

The TMDL developed for these streams will calculate the maximum amount of each listed pollutant that the streams can receive and still meet water quality standards. The TMDL will also identify all potential or suspected pollutant sources in the watershed and distribute the allowable pollutant loads among those various sources. When developed, the TMDL will use the most current and available data. For this reason, the final TMDL may present information that differs from that contained in this information sheet.

For more information call or write:

Department of Natural Resources
Water Protection Program – Watershed Protection Section
P.O. Box 176
Jefferson City, MO 65102-0176
Ph: 1-800-361-4827 or 573-751-1300
Fax: 573-526-6802
Email: TMDL@dnr.mo.gov
Program Home Page: dnr.mo.gov/env/wpp/index.html