

MISSOURI
DEPARTMENT OF
NATURAL RESOURCES

Total Maximum Daily Load Information Sheet

Fox Creek

Water Body ID: 1842

Water Body Segment at a Glance:

County: St. Louis
Nearby Cities: Wildwood and Eureka
Segment Length: 7.2 miles
Watershed Size: 19.1 square miles
Pollutant: Aquatic macroinvertebrate bioassessments
Source: Unknown



Statewide Map Showing Location of Watershed

Scheduled for TMDL development:

TMDL development schedules are subject to change.

The most current schedule for TMDL development is available on the department's website at dnr.mo.gov/env/wpp/tmdl/wpc-tmdl-progress.htm

Description of the Problem

A water body is considered impaired when it fails to meet applicable water quality standards. Water quality standards consist of designated uses, water quality criteria, an antidegradation policy and implementation procedures. Fox Creek is impaired due to violations of state water quality criteria that protect aquatic life designated uses.

Designated uses of Fox Creek*

- Warm Water Habitat (WWH)
- Whole Body Contact Recreation Category B (WBC-B)
- Secondary Contact Recreation (SCR)
- Human Health Protection (HHP)
- Irrigation (IRR)
- Livestock and Wildlife Protection (LWP)

* In addition to these specific uses, all waters of the state are protected by the general water quality criteria that are specified in the state's Water Quality Standards at 10 CSR 20-7.031(4).

Uses that are impaired

- Warm Water Habitat (WWH)
- General Criteria

Standards that apply

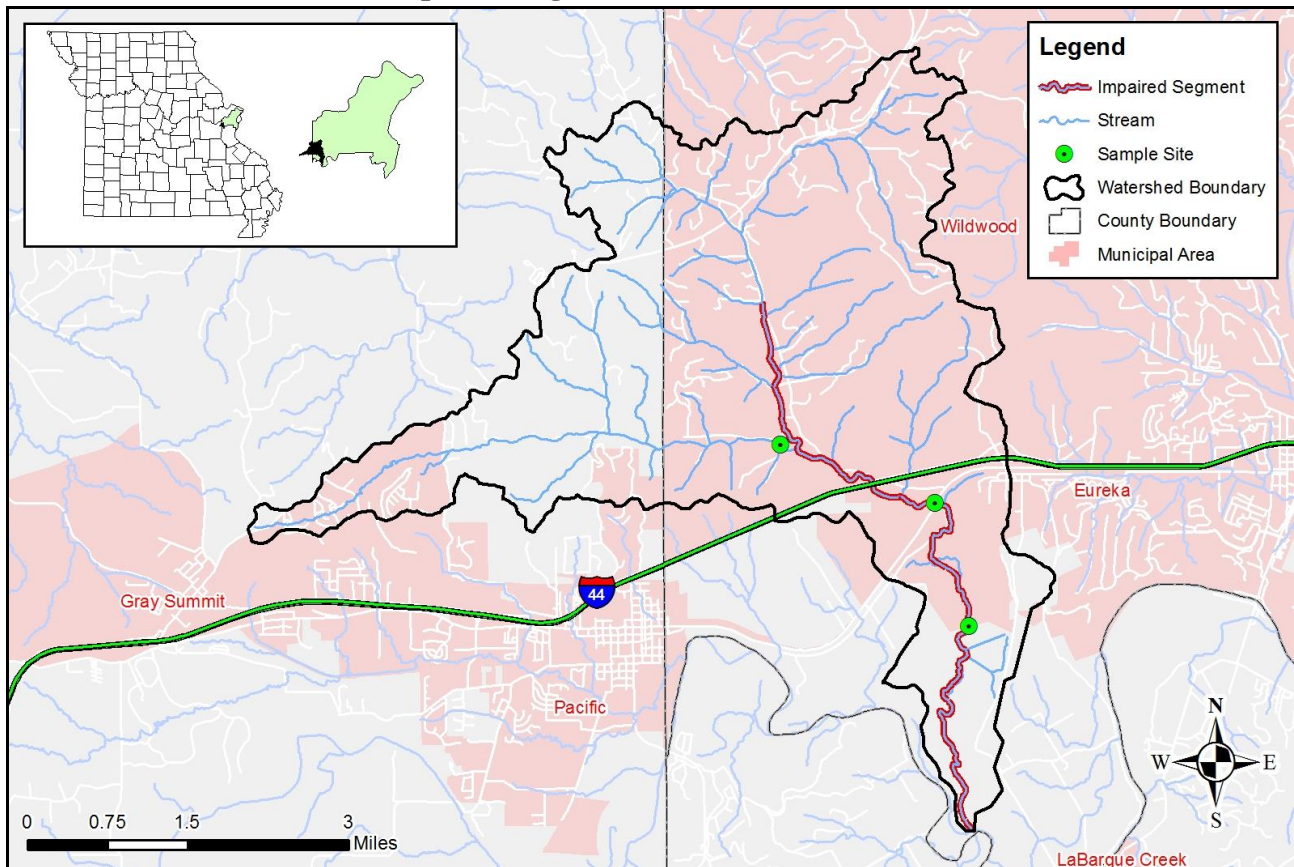
The state’s general water quality criteria at 10 CSR 20-7.031(4) are applicable to all waters of the state at all times. No water contaminant, by itself or in combination with other substances, shall prevent the waters of the state from meeting the following conditions:

- Waters shall be free from substances or conditions in sufficient amounts to result in toxicity to human, animal, or aquatic life [10 CSR 20-7.031(4)(D)].
- Waters shall be free from physical, chemical, or hydrologic changes that would impair the natural biological community [10 CSR 20-7.031(4)(G)].

Background information and water quality data

Fox Creek is located in St. Louis County and flows through the municipalities of Wildwood and Eureka. Fox Creek is a tributary of the Meramec River. Aquatic macroinvertebrate samples and fish community data were collected from Fox Creek in various years from 2001 to 2010. The available data suggests impaired aquatic communities for both fish and invertebrates. There is no additional chemistry data that indicates if the impaired condition is due to habitat or instream toxicity, although several instances of low dissolved oxygen have been observed.

Map Showing the Fox Creek Watershed



TMDL for Fox Creek

The Fox Creek TMDL will calculate the maximum amount of each listed pollutant that the stream can receive and still meet water quality standards. The TMDL will also identify all potential or suspected pollutant sources in the watershed and distribute the allowable pollutant loads among those various sources. When developed, the Fox Creek TMDL will use the most current and available data. For this reason, the final TMDL may present information that differs from that contained in this information sheet.

For more information call or write:

Department of Natural Resources
Water Protection Program – Watershed Protection Section
P.O. Box 176
Jefferson City, MO 65102-0176
Ph: 1-800-361-4827 or 573-751-1300
Fax: 573-526-6802
Email: TMDL@dnr.mo.gov
Program Home Page: dnr.mo.gov/env/wpp/index.html