



**MISSOURI**  
DEPARTMENT OF  
NATURAL RESOURCES

# Total Maximum Daily Load Information Sheet

## Dry Wood Creek

**Water Body ID: 1314**

---

### Water Body Segment at a Glance:

**Counties:** Vernon and Barton  
**Nearby Cities:** Liberal and Deerfield  
**Length:** 29.9 miles  
**Pollutant:** Sulfate plus chloride  
**Source:** Acid mine drainage



Statewide Map Showing Location of Watershed

### Scheduled for TMDL development:

TMDL development schedules are subject to change.

The most current schedule for TMDL development is available on the department's website at [dnr.mo.gov/env/wpp/tmdl/wpc-tmdl-progress.htm](http://dnr.mo.gov/env/wpp/tmdl/wpc-tmdl-progress.htm)

---

### Description of the Problem

A water body is considered impaired when it fails to meet applicable water quality standards. Water quality standards consist of designated uses, water quality criteria, an antidegradation policy and implementation procedures. Dry Wood Creek is impaired due to exceedances of water quality criteria for the protection of aquatic life.

### Designated uses of Dry Wood Creek\*

- Warm Water Habitat (WWH)
- Whole Body Contact Recreation Category B (WBC-B)
- Secondary Contact Recreation (SCR)
- Human Health Protection (HHP)
- Irrigation (IRR)
- Livestock and Wildlife Protection (LWP)

\*In addition to these specific uses, all waters of the state are protected by the general water quality criteria that are specified in the state's Water Quality Standards at 10 CSR 20-7.031(4).

### Designated use that is impaired

- Warm Water Habitat (WWH)

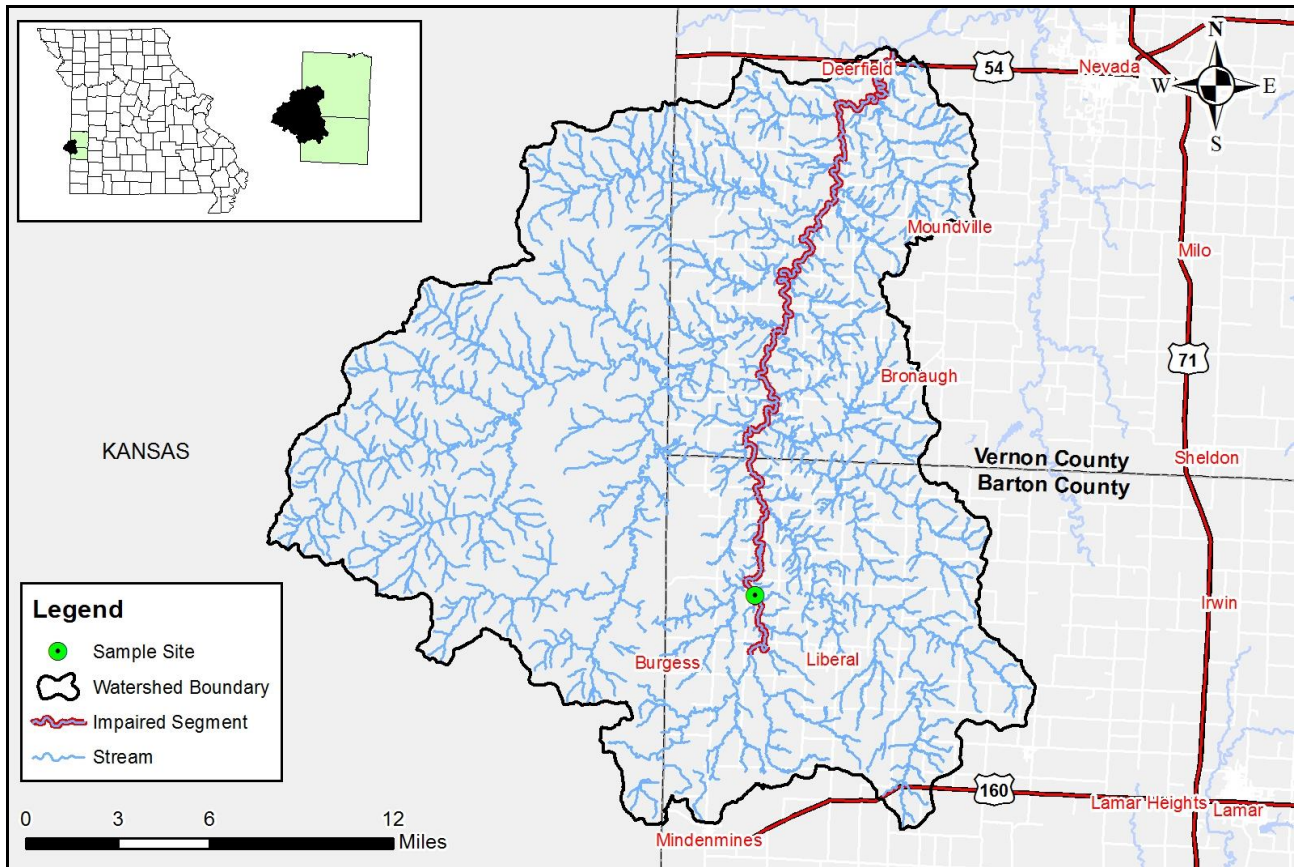
### Criteria that apply

Numeric criteria for sulfate and chloride are found in Table A of Missouri’s Water Quality Standards at 10 CSR 20-7.031. However, this criteria was disapproved by the U.S. Environmental Protection Agency. For this reason, Dry Wood Creek was assessed against the state’s older sulfate plus chloride criterion. The acute criterion for sulfate plus chloride is 1,000 milligrams per liter.

### Background information and water quality data

Dry Wood Creek is a large stream in southwest Missouri that is a tributary to the Meramec River. The Dry Wood Creek watershed extends outside Missouri into Kansas. The department judges a stream to be impaired by sulfate plus chloride if the acute criterion is exceeded on more than one occasion during the last three years for which data is available. The last three years of available data for Dry Wood Creek are from August 2002 to July 2005. During this period, the acute criterion was exceeded twice.

**Map of the Dry Wood Creek Watershed**



### TMDL for Dry Wood Creek

The Dry Wood Creek TMDL will calculate the maximum amount of each listed pollutant that the stream can receive and still meet water quality standards. The TMDL will also identify all potential or suspected pollutant sources in the watershed and distribute the allowable pollutant loads among those various sources. When developed, the Dry Wood Creek TMDL will use the most current and available data. For this reason, the final TMDL may present information that differs from that contained in this information sheet.

**For more information call or write:**

Department of Natural Resources

Water Protection Program – Watershed Protection Section

P.O. Box 176

Jefferson City, MO 65102-0176

Ph: 1-800-361-4827 or 573-751-1300

Fax: 573-526-6802

Email: [TMDL@dnr.mo.gov](mailto:TMDL@dnr.mo.gov)

Program Home Page: [dnr.mo.gov/env/wpp/index.html](http://dnr.mo.gov/env/wpp/index.html)