



# Total Maximum Daily Load Information Sheet

## Hominy Branch

---

### Water Body Segment at a Glance:

**County:** Boone  
**Nearby City:** Columbia  
**Water Body ID:** 1011  
**Segment Length:** 1 mile  
**Pollutant:** *E. coli* bacteria  
**Source:** Runoff – various<sup>1</sup>



Statewide Map Showing Location of Watershed

### Scheduled for TMDL development:

TMDL development schedules are subject to change.

The most current schedule for TMDL development is available on the department's website at [dnr.mo.gov/env/wpp/tmdl/wpc-tmdl-progress.htm](http://dnr.mo.gov/env/wpp/tmdl/wpc-tmdl-progress.htm)

---

### Description of the Problem

A water body is considered impaired when it fails to meet applicable water quality standards. Water quality standards consist of designated uses, water quality criteria, an antidegradation policy and implementation procedures. Hominy Branch is impaired due to exceedances of water quality criteria that protect recreational uses.

### Designated uses of Hominy Branch\*

- Warm Water Habitat (WWH)
- Whole Body Contact Recreation Category B (WBC-B)
- Secondary Contact Recreation (SCR)
- Human Health Protection (HHP)
- Irrigation (IRR)
- Livestock and Wildlife Protection (LWP)

\*In addition to these specific uses, all waters of the state are protected by the general water quality criteria that are specified in the state's Water Quality Standards at 10 CSR 20-7.031(4).

### Use that is impaired

- Whole Body Contact Recreation Category B (WBC-B)

---

<sup>1</sup> Sources cited are runoff from forest, grassland, parkland, rural areas, residential areas, urban areas, and storm sewers.

### Criteria that apply

- Missouri's Water Quality Standards at 10 CSR 20-7.031(5)(C) and Table A state that for waters designated for whole body contact recreation category B, the *E. coli* bacteria count, measured as a geometric mean, shall not exceed 206 colonies per 100 milliliters of water during the recreational season. The recreational season is defined as being from April 1 to October 31.

### Assessment and water quality data

Hominy Branch flows through the city of Columbia and is a tributary of Hinkson Creek. High counts of *E. coli* are an indication of fecal contamination and an increased risk of pathogen-induced illness to humans. *E. coli* are bacteria found in the intestines of warm-blooded animals and are used as indicators of the risk of waterborne disease from pathogenic (disease causing) bacteria or viruses. The department judges a stream to be impaired by bacteria if the water quality criterion for *E. coli* is exceeded in any of the last three years for which there is a minimum of five samples taken during the recreational season. Recreational season *E. coli* bacteria data for Hominy Branch was collected in 2004. The geometric mean of these data exceeded the whole body contact category B criterion.

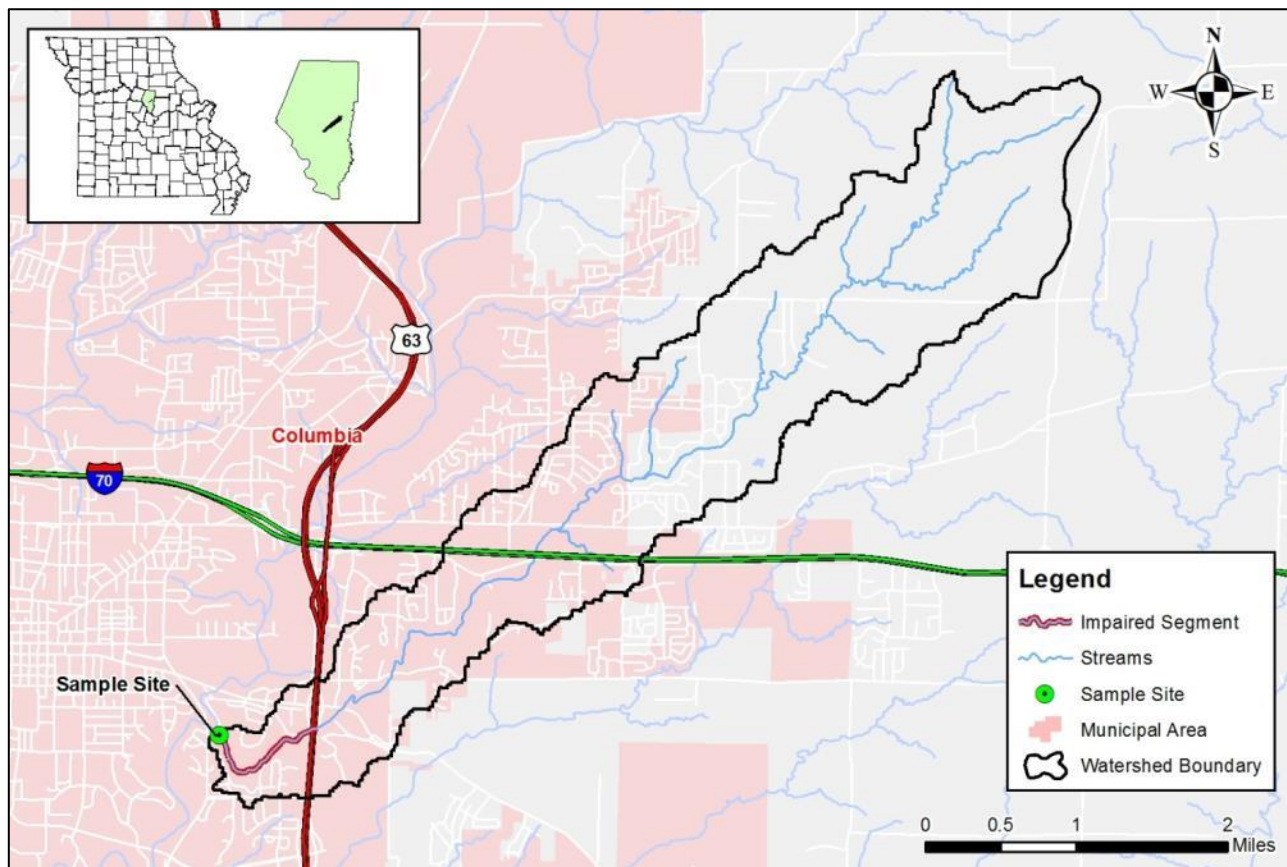
**Bacteria Data for Hominy Branch**

<i>Sample Site</i>	<i>Water Body</i>	<i>Year</i>	<i>Month</i>	<i>Day</i>	<i>Flow</i>	<i>E. coli</i>	<i>Rec. Season E. coli.</i>
1011/0.1	Hominy Cr. near mouth	2004	7	7		460	460
1011/0.1	Hominy Cr. near mouth	2004	7	27		401	401
1011/0.1	Hominy Cr. near mouth	2004	8	18		78	78
1011/0.1	Hominy Cr. near mouth	2004	8	20		4800	4800
1011/0.1	Hominy Cr. near mouth	2004	9	9	0.02	94	94
1011/0.1	Hominy Cr. near mouth	2004	9	16	3.71	4840	4840
1011/0.1	Hominy Cr. near mouth	2004	9	29		550	550
1011/0.1	Hominy Cr. near mouth	2004	11	9		46	
1011/0.1	Hominy Cr. near mouth	2004	12	15		52	
	Geometric Mean 2004						560

### TMDL for Hominy Branch

The Hominy Branch TMDL will calculate the maximum amount of each listed pollutant that the stream can receive and still meet water quality standards. The TMDL will also identify all potential or suspected pollutant sources in the watershed and distribute the allowable pollutant loads among those various sources. When developed, the Hominy Branch TMDL will use the most current and available data. For this reason, the final TMDL may present information that differs from that contained in this information sheet.

## Map of the Hominy Branch Watershed



**For more information call or write:**

Department of Natural Resources  
Water Protection Program – Watershed Protection Section  
P.O. Box 176  
Jefferson City, MO 65102-0176  
Ph: 1-800-361-4827 or 573-751-1300  
Fax: 573-526-6802  
Email: [TMDL@dnr.mo.gov](mailto:TMDL@dnr.mo.gov)  
Program Home Page: [dnr.mo.gov/env/wpp/index.html](http://dnr.mo.gov/env/wpp/index.html)