

# Total Maximum Daily Load Information Sheet

## Bonne Femme Creek

Water Body ID: 0750 and 0753

### Water Body Segment at a Glance:

**County:** Boone  
**Nearby City:** Columbia  
**Length:** 7.8 miles (0750)  
**Length:** 7.0 miles (0753)  
**Pollutant:** *E. coli* bacteria  
**Source:** Rural nonpoint sources



State Map Showing Location of Watershed

### Scheduled for TMDL development:

TMDL development schedules are subject to change.

The most current schedule for TMDL development is available on the department's website at [dnr.mo.gov/env/wpp/tmdl/wpc-tmdl-progress.htm](http://dnr.mo.gov/env/wpp/tmdl/wpc-tmdl-progress.htm).

### Description of the Problem

A water body is considered impaired when it fails to meet applicable water quality standards. Water quality standards consist of designated uses, water quality criteria, an antidegradation policy and implementation procedures. Bonne Femme Creek is impaired due to exceedances of the water quality criteria for the protection of recreational uses.

### Designated uses of Bonne Femme Creek\*

- Warm Water Habitat (WWH)
- Whole Body Contact Recreation Category A (WBC-A) ← water body 750
- Whole Body Contact Recreation Category B (WBC-B) ← water body 753
- Secondary Contact Recreation (SCR)
- Human Health Protection (HHP)
- Irrigation (IRR)
- Livestock and Wildlife Protection (LWP)

\*In addition to these specific uses, all waters of the state are protected by the general water quality criteria that are specified in the state's Water Quality Standards at 10 CSR 20-7.031(4).

### Designated use that are impaired

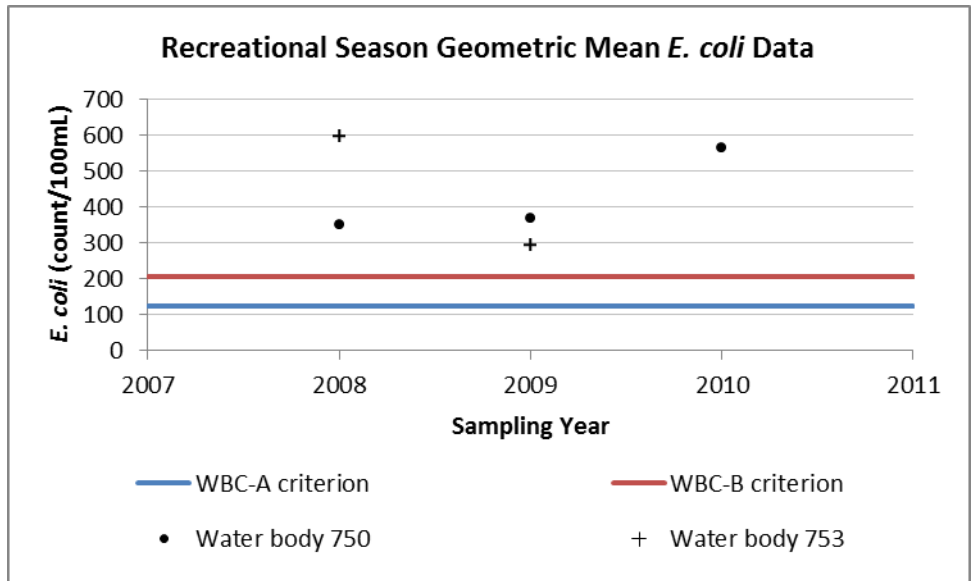
- Whole Body Contact Recreation Category B (WBC-B)

**Criteria that apply**

- Missouri’s Water Quality Standards at 10 CSR 20-7.031(5)(C) and Table A state that the *E. coli* bacteria count shall not exceed 126 colonies per 100 milliliters of water (126 col/100 mL) for Category A and 206 col/100 mL for Category B waters. This count is the geometric mean during the recreational season (April 1- October 31) in waters designated for whole body contact recreation.

**Assessment and water quality data**

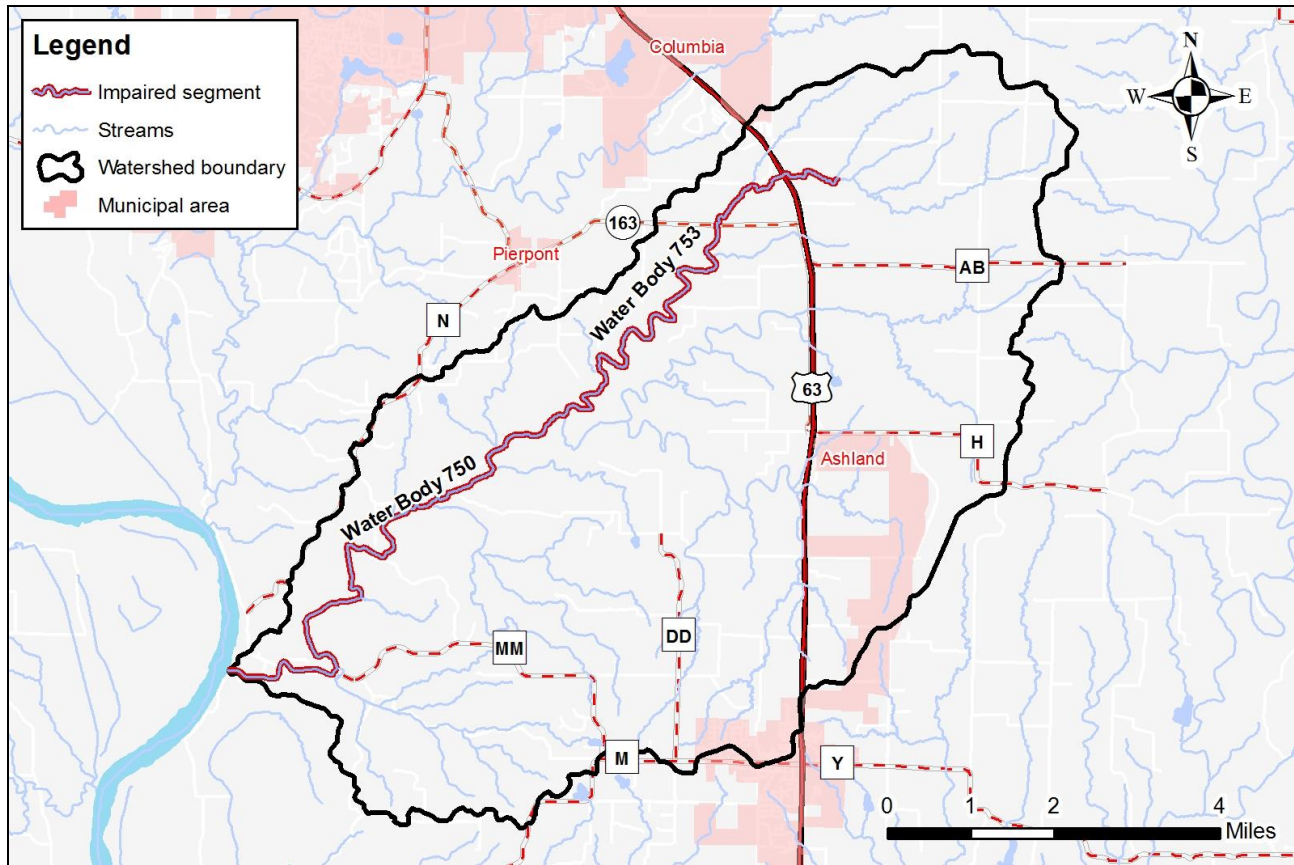
Bonne Femme Creek is a tributary to the Missouri River in southern Boone County. Excessive amounts of *Escherichia coli*, or *E. coli*, bacteria is an indication of contaminated water and an increased risk of pathogen-induced illness to humans. *E. coli*, are bacteria found in the intestines of warm blooded animals and are used as indicators of the risk of waterborne disease from pathogenic (disease causing) bacteria or viruses.



**TMDL for Bonne Femme Creek**

The Bonne Femme Creek TMDL will calculate the maximum amount of each listed pollutant that the stream can receive and still meet water quality standards. The TMDL will also identify all potential or suspected pollutant sources in the watershed and distribute the allowable pollutant loads among those various sources. When developed, the Bonne Femme Creek TMDL will use the most current and available data. For this reason, the final TMDL may present information that differs from that contained in this information sheet.

## Map of the Bonne Femme Creek Watershed



**For more information call or write:**

Department of Natural Resources  
Water Protection Program – Watershed Protection Section  
P.O. Box 176  
Jefferson City, MO 65102-0176  
Ph: 1-800-361-4827 or 573-751-1300  
Fax: 573-526-6802  
Email: [TMDL@dnr.mo.gov](mailto:TMDL@dnr.mo.gov)  
Program Home Page: [dnr.mo.gov/env/wpp/index.html](http://dnr.mo.gov/env/wpp/index.html)