

**MISSOURI**  
DEPARTMENT OF  
NATURAL RESOURCES

# Total Maximum Daily Load Information Sheet

## Fowler Creek

Water Body ID: 0747

---

### Water Body Segment at a Glance:

**County:** Boone  
**Nearby City:** Ashland  
**Length:** 6.0 miles  
**Pollutant:** Low dissolved oxygen  
**Source:** Unknown



State Map Showing Location of Watershed

### Scheduled for TMDL development:

TMDL development schedules are subject to change.

The most current schedule for TMDL development is available on the department's website at [dnr.mo.gov/env/wpp/tmdl/wpc-tmdl-progress.htm](http://dnr.mo.gov/env/wpp/tmdl/wpc-tmdl-progress.htm).

---

### Description of the Problem

A water body is considered impaired when it fails to meet applicable water quality standards. Water quality standards consist of designated uses, water quality criteria, an antidegradation policy and implementation procedures. Fowler Creek is impaired due to exceedances of water quality criteria that protect aquatic life.

### Designated uses of Fowler Creek\*

- Warm Water Habitat (WWH)
- Whole Body Contact Recreation Category B (WBC-B)
- Secondary Contact Recreation (SCR)
- Human Health Protection (HHP)
- Irrigation (IRR)
- Livestock and Wildlife Protection (LWP)

\*In addition to these specific uses, all waters of the state are protected by the general water quality criteria that are specified in the state's Water Quality Standards at 10 CSR 20-7.031(4).

### Use that is impaired

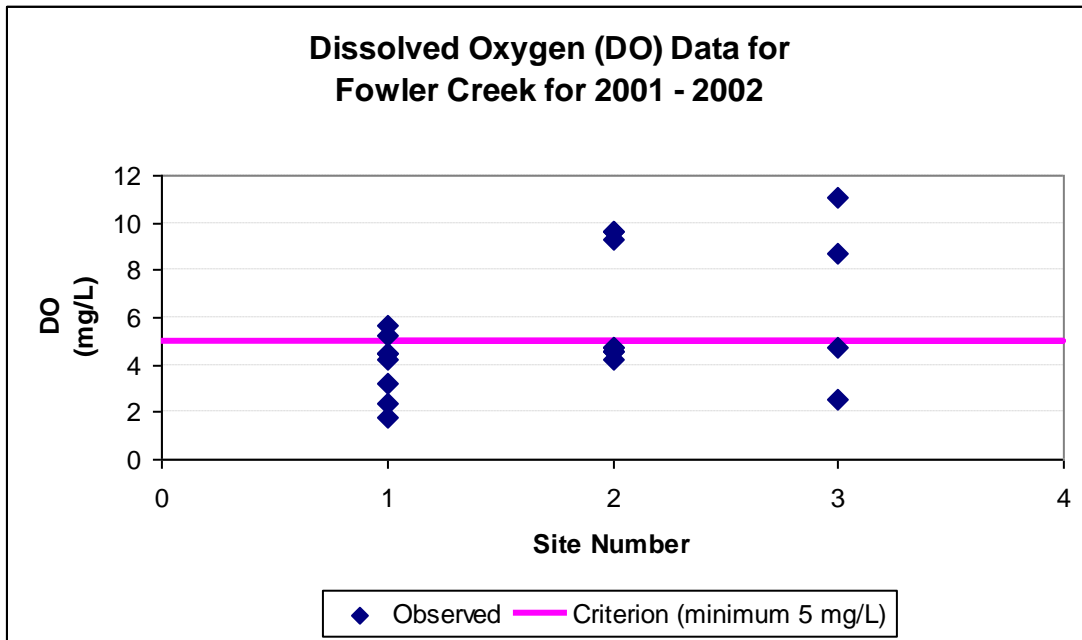
- Warm Water Habitat (WWH)

**Criteria that apply**

- In the Missouri’s Water Quality Standards at 10 CSR 20-7.031 Table A, the criterion for dissolved oxygen for the protection of aquatic life in warm water habitats is a minimum of 5 mg/L.

**Assessment and water quality data**

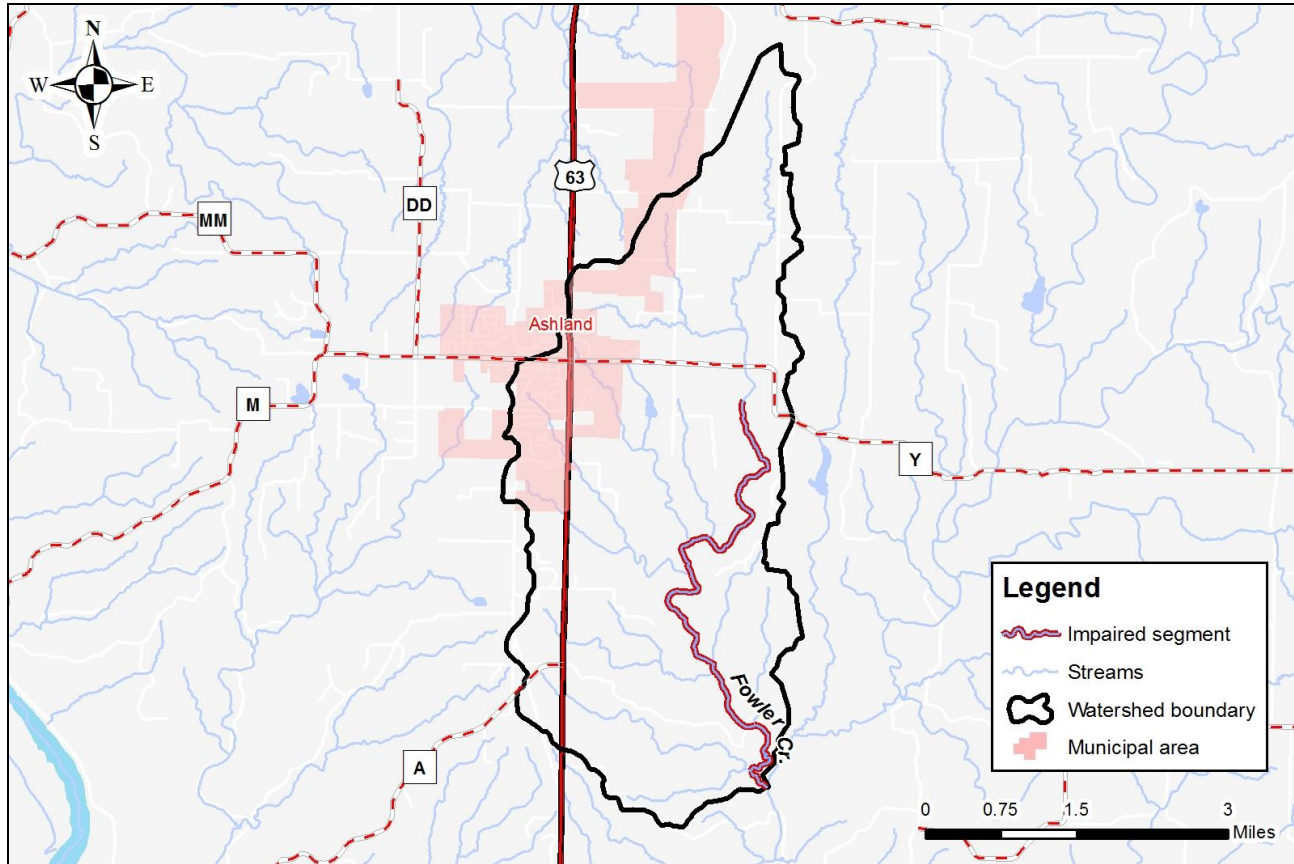
Dissolved oxygen is important as many aquatic organisms require high levels of oxygen to survive. A water body is judged to be impaired due to low dissolved oxygen if more that 10 percent of measurements in a water body fail to meet the water quality criterion. In Fowler Creek, 13 of 20 measurements (65 percent) failed to meet the dissolved oxygen criteria of 5 mg/L.



**TMDL for Fowler Creek**

The Fowler Creek TMDL will calculate the maximum amount of each listed pollutant that the stream can receive and still meet water quality standards. The TMDL will also identify all potential or suspected pollutant sources in the watershed and distribute the allowable pollutant loads among those various sources. When developed, the Fowler Creek TMDL will use the most current and available data. For this reason, the final TMDL may present information that differs from that contained in this information sheet.

## Map of the Fowler Creek Watershed



**For more information call or write:**  
Department of Natural Resources  
Water Protection Program – Watershed Protection Section  
P.O. Box 176  
Jefferson City, MO 65102-0176  
Ph: 1-800-361-4827 or 573-751-1300  
Fax: 573-526-6802  
Email: [TMDL@dnr.mo.gov](mailto:TMDL@dnr.mo.gov)  
Program Home Page: [dnr.mo.gov/env/wpp/index.html](http://dnr.mo.gov/env/wpp/index.html)