



Total Maximum Daily Load Information Sheet

Sugar Creek

Water Body ID: 0686

Water Body Segment at a Glance:

County: Randolph
Nearby City: Moberly
Length: 6.8 miles
Pollutant: Low dissolved oxygen
Source: Unknown



State map showing location of watershed

Schedule for TMDL development:

TMDL development schedules are subject to change.

The most current schedule for TMDL development is available on the department's website at dnr.mo.gov/env/wpp/tmdl/wpc-tmdl-progress.htm

Other TMDLs:

In 2002, the U.S. Environmental Protection Agency approved a TMDL for Sugar Creek to address low pH. This TMDL is available online at dnr.mo.gov/env/wpp/tmdl/0686-sugar-ck-record.htm

Description of the Problem

A water body is considered impaired when it fails to meet applicable water quality standards. Water quality standards consist of designated uses, water quality criteria, an antidegradation policy and implementation procedures. Sugar Creek is impaired due to exceedances of state water quality criteria that protect aquatic life.

Designated uses of Sugar Creek*

- Warm Water Habitat (WWH)
- Whole Body Contact Recreation Category B (WBC-B)
- Secondary Contact Recreation (SCR)
- Human Health Protection (HHP)
- Irrigation (IRR)
- Livestock and Wildlife Protection (LWP)

*In addition to these specific uses, all waters of the state are protected by the general water quality criteria that are specified in the state's Water Quality Standards at 10 CSR 20-7.031(4).

Designated use that is impaired

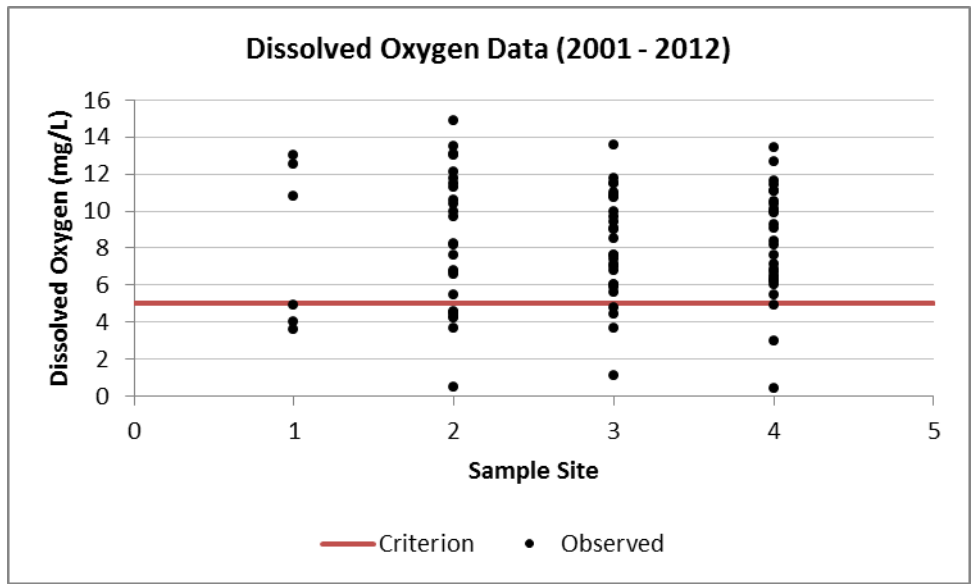
- Warm Water Habitat (WWH)

Criteria that apply

- In the Missouri Water Quality Standards at 10 CSR 20-7.031 Table A, the criterion for dissolved oxygen for waters designated as warm water habitat is a minimum 5 mg/L.

Assessment and water quality data

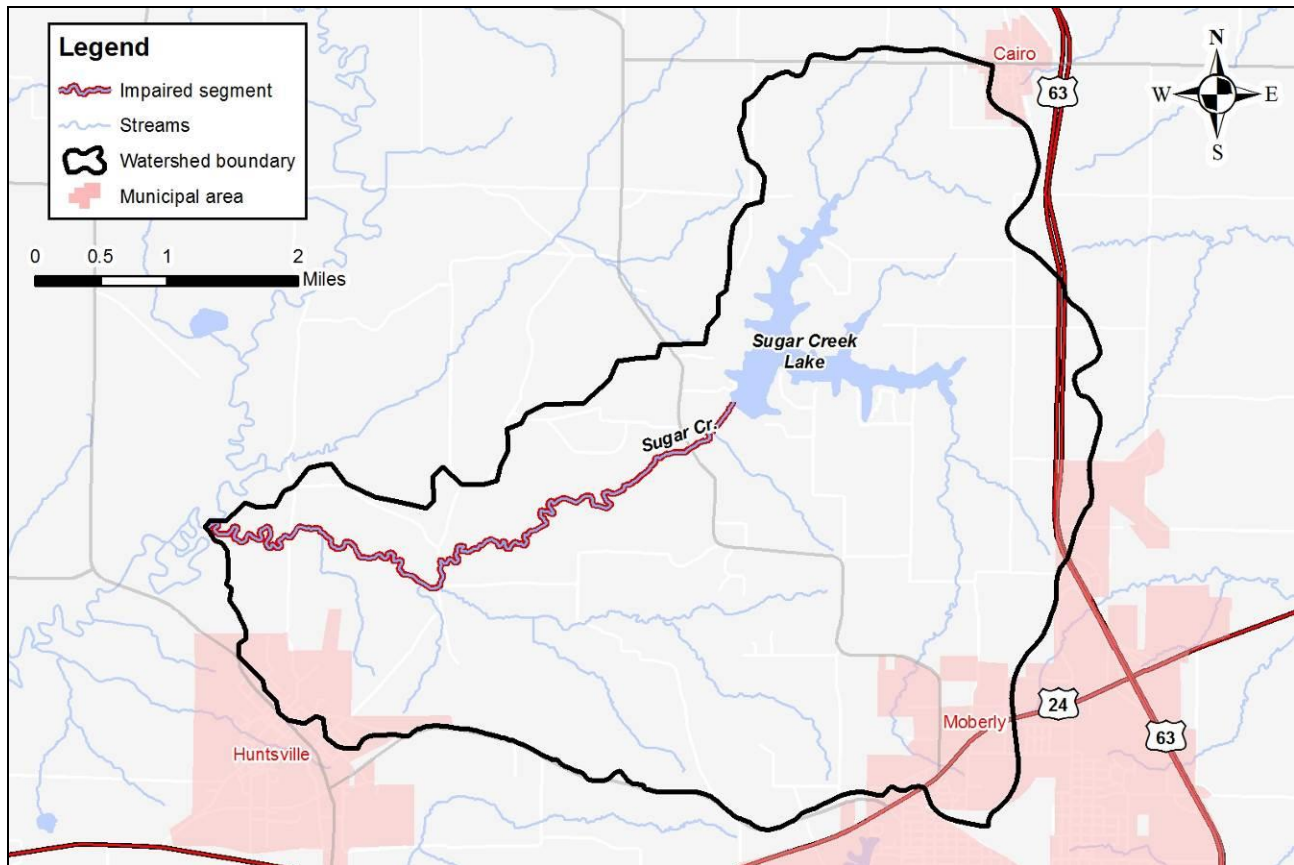
Dissolved oxygen is important as many aquatic organisms require high levels of oxygen to survive. The department judges a water to be impaired due to low dissolved oxygen if more that 10 percent of measurements in a water body fail to meet the water quality criterion. In the case of Sugar Creek, 17 of 88 samples, or 19 percent, did not meet the water quality criterion.



TMDL for Sugar Creek

The Sugar Creek TMDL will calculate the maximum amount of each listed pollutant that the stream can receive and still meet water quality standards. The TMDL will also identify all potential or suspected pollutant sources in the watershed and distribute the allowable pollutant loads among those various sources. When developed, the Sugar Creek TMDL will use the most current and available data. For this reason, the final TMDL may present information that differs from that contained in this information sheet.

Map of the Sugar Creek watershed



For more information call or write:

Department of Natural Resources
Water Protection Program – Watershed Protection Section
P.O. Box 176
Jefferson City, MO 65102-0176
Ph: 1-800-361-4827 or 573-751-1300
Fax: 573-526-6802
Email: TMDL@dnr.mo.gov
Program Home Page: dnr.mo.gov/env/wpp/index.html