

Missouri Department of Natural Resources

# Total Maximum Daily Load Information Sheet

## Dog Creek

---

### Waterbody Segment at a Glance:

**County:** Davies  
**Nearby Cities:** Gallatin  
**Length of impairment:** 0.2 miles  
**Pollutant:** Non-Volatile Suspended Solids (NVSS)  
**Source:** Traeger Quarry



State map showing location of watershed

**TMDL Priority Ranking:** Low

---

### Description of the Problem

#### Beneficial uses of Dog Creek

- Livestock and Wildlife Watering
- Protection of Warm Water Aquatic Life
- Protection of Human Health associated with Fish Consumption

#### Use that is impaired

- Protection of Warm Water Aquatic Life

#### Standards that apply

- General criteria contained in Missouri's Water Quality Standards 10 CSR 20-7.030 (3)(A)(C) and (G). These criteria state:
  - (A) Waters shall be free from substances in sufficient amounts to cause the formation of putrescent, unsightly or harmful bottom deposits or prevent full maintenance of beneficial uses;
  - (C) Waters shall be free from substances in sufficient amounts to cause unsightly color or turbidity, offensive odor or prevent full maintenance of beneficial uses;
  - (G) Waters shall be free from physical, chemical or hydrologic changes that would impair the natural biological community.

### Background Information

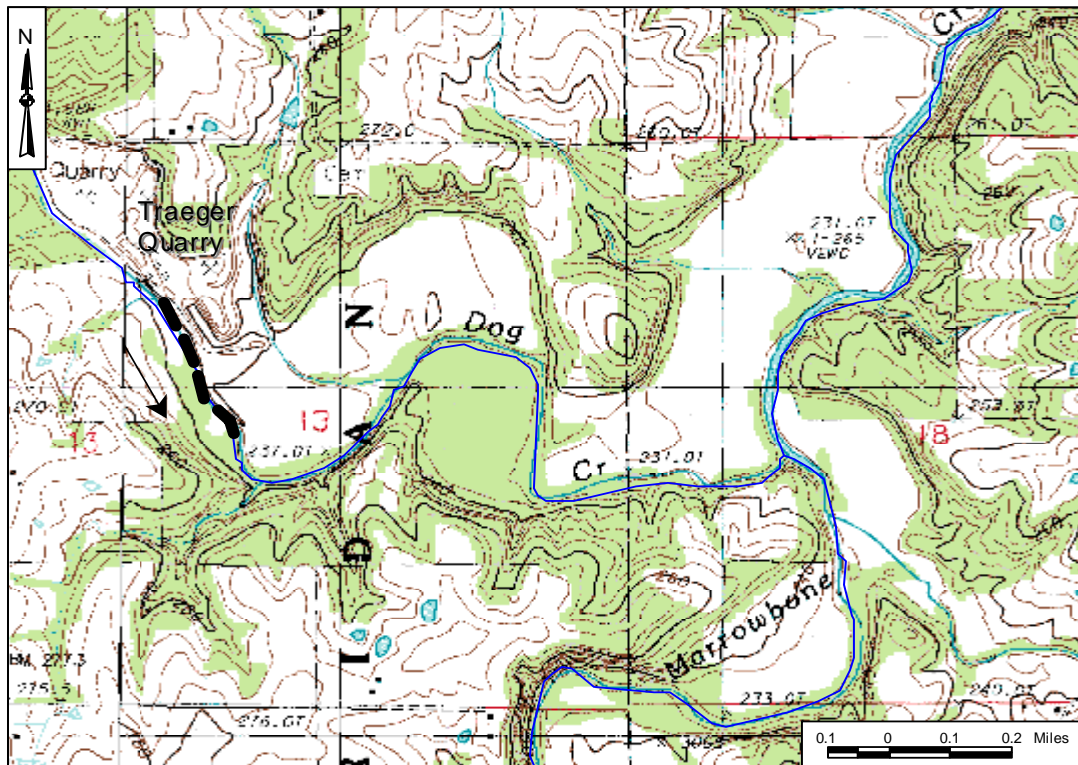
The impairment has been changed for the 2002 303(d) list from sediment to Non-Volatile Suspended Solids (NVSS). NVSS is a measure of soil particles or other mineral particles in the

water. These particles enter the water via soil erosion or the erosion of sand, gravel or other minerals from stockpiles or mining areas.

Erosion from a limestone quarry is causing deposition of limestone solids in Dog Creek. The movement of so much limestone into the stream is creating large gravel bars that change the stream flow. This is causing the stream to wander (meander) more and has accelerated bank erosion.. Solids from erosion often settle onto the bottom of a stream smothering natural substrates (materials in the streambed), aquatic invertebrate animals and fish eggs.

An inspection of this quarry in 1992 by the Department of Natural Resources noted improved storm water controls. The department will continue to inspect this quarry to insure it meets the requirements of its storm water discharge permit.

### Dog Creek in Daviess County, Missouri, Showing Impaired Segment



--- Impaired segment

→ Direction of flow

**For more information call or write:**

Missouri Department of Natural Resources  
Water Protection Program  
P.O. Box 176, Jefferson City, MO 65102-0176  
1-800-361-4827 or (573) 751-1300 office  
(573) 522-9920 fax  
Program Home Page: [www.dnr.mo.gov/env/wpp/index.html](http://www.dnr.mo.gov/env/wpp/index.html)