



Missouri Department of Natural Resources

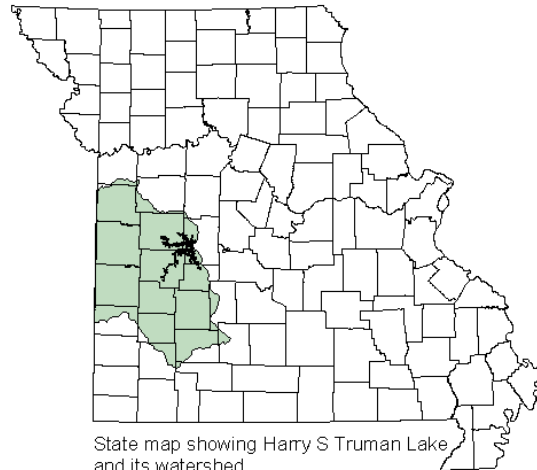
Total Maximum Daily Load Information Sheet

Harry S Truman Lake

Water Body Segment at a Glance:

County: Benton
Nearby Cities: Warsaw
Area of impairment: 10,000 acres
Pollutant: Manganese
Source: Natural

Note: This lake was deleted from the 2004/2006 303(d) List because the criterion for manganese has been removed from Missouri's Water Quality Standards



State map showing Harry S Truman Lake and its watershed

Water Body Removed from List: Sept. 27, 2007

Description of the Problem

Beneficial uses of Truman Lake

- Livestock and Wildlife Watering
- Protection of Warm Water Aquatic Life
- Protection of Human Health (Fish Consumption)
- Whole Body Contact Recreation – Category A
- Secondary Contact Recreation
- Drinking Water Supply

Use that was listed as impaired

- Drinking Water Supply

Standards that apply

There is **no longer** a criterion in the Missouri Water Quality Standards (10 CSR 20-7.031) for manganese. The standard used to be 50 µg/L as the maximum amount of manganese allowed for Drinking Water Supplies. This was an aesthetic standard that sought to protect a water supply against possible taste, odor and laundry staining problems caused by excessive amounts of manganese. Exceedence of that standard was not a threat to human health.

Background Information

Truman Lake is located near Warsaw, Missouri, on the Osage River. The Truman Dam and Reservoir was completed in October 1979. The reservoir has a surface area of about 56,000 acres

and is the largest flood-control lake in Missouri. Water under the influence of the Osage River arm of Truman Lake near Clinton is used as a drinking water supply source. Henry County Public Water Supply Districts #2 and #3 take water indirectly from Truman Lake.

Manganese does not present a human health threat or affect the biotic community, but can be responsible for offensive tastes and appearances in drinking water. The drinking water systems that use the water directly influenced by the lake can treat for manganese if it is in levels high enough to cause problems. The Department's Public Drinking Water Branch annually tests water supplies to ensure the finished product is meeting the drinking water requirements. The tests indicate levels of manganese in finished water were low in the three water supplies that use Truman Lake water even though they do not have any special treatment for manganese. The levels of manganese in Truman Lake are due to natural causes and there is no practical method for remediating this source water impairment other than by removal at drinking water treatment plant.

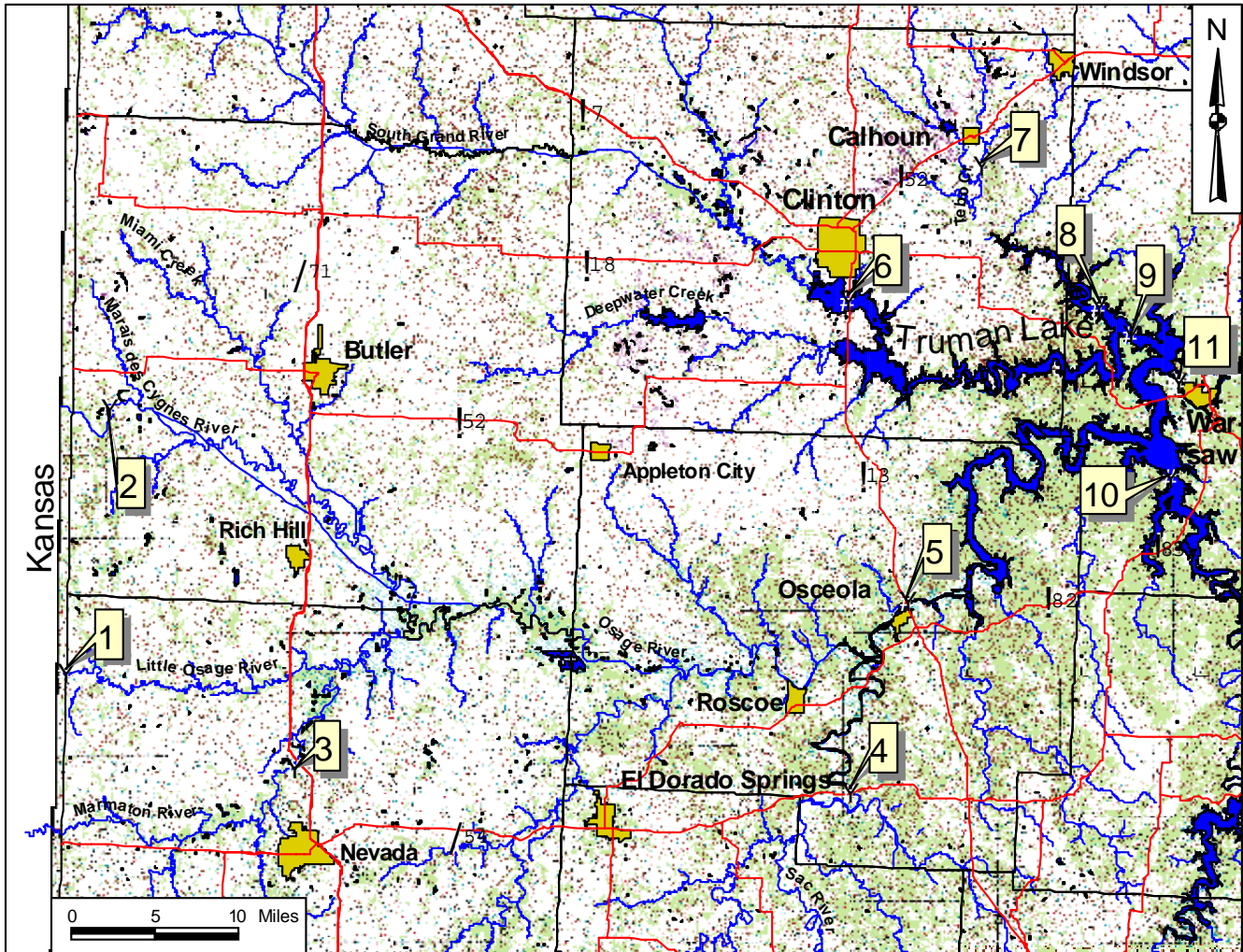
The Missouri Clean Water Commission voted to remove manganese and iron from the list of impairments to drinking water sources since they do not cause health problems, do not adversely affect aquatic life and can be removed by drinking water treatment facilities. That action took effect Dec.31, 2005 and the U.S. Environmental Protection Agency removed this lake from the 2004/2006 303(d) List Sept. 27, 2007.

Below is a list of the sampling sites on and around the lake. A map of the lake showing the site locations is on the next page.

Sample Site Index

- 1 – Little Osage River at State Line
- 2 – Marais des Cygnes River near Worland
- 3 – Marmaton River at Highway 71
- 4 – Sac River at Highway 54
- 5 – Osage Arm of Truman Lake
- 6 – South Grand Arm at Highway 13
- 7 – Tebo Creek 1 mile South of Calhoun
- 8 – Tebo Creek Arm of Truman Lake
- 9 – Four miles uplake from the dam
- 10 – Pomme de Terre arm of Truman Lake
- 11 – Osage River below Truman Dam

Harry S Truman Lake, Missouri, with Sampling Sites Identified



For more information call or write:
Missouri Department of Natural Resources
Water Protection Program
P.O. Box 176
Jefferson City, MO 65102-0176
1-800-361-4827 or 573-751-1300 office
573-522-9920 fax
Program Home Page: www.dnr.mo.gov/env/wpp/index.html