

Missouri Department of Natural Resources  
**Total Maximum Daily Load Information Sheet**

## River des Peres

---

### Water Body Segment at a Glance:

**County:** St. Louis and St. Louis City<sup>1</sup>  
**Nearby City:** St. Louis  
**Length of impaired segment:**  
    **Water Body ID 1710<sup>1</sup>:** 1 mile  
    **Water Body ID 1710U-01:** 2.5 miles  
**Pollutant:** Chloride  
**Source:** Urban NPS



State Map Showing Location of Watershed

**Scheduled for TMDL development:** 2014

---

### Description of the Problem

#### Designated Beneficial uses of River des Peres (WBID 1710)

- Livestock and Wildlife Watering
- Protection of Warm Water Aquatic Life
- Protection of Human Health (Fish Consumption)

**River des Peres WBID 1710U-01 is unclassified and therefore has no uses assigned.**

#### Uses that are impaired

- Protection of Warm Water Aquatic Life (1710)
- General Criteria (1710U-01)

#### Standards that apply

- The criteria for chloride are found in Missouri's Water Quality Standards, 10 CSR 20-7.031 Table A. The chronic criterion is 230 milligrams per liter (mg/L or parts per million) and the acute criterion (which apply to unclassified water bodies) is 860 mg/L.
- Unclassified water bodies in Missouri are protected by the general criteria contained in Missouri's Water Quality Standards (WQS), 10 CSR20-7.031(3). These criteria are also called narrative criteria, since they do not contain specific numerical limits. For the unclassified segment of River des Peres, the following criteria apply:
  - (D) Waters shall be free from substances or conditions in sufficient amounts to result in toxicity to human, animal or aquatic life
  - (G) Waters shall be free from physical, chemical or hydrologic changes that would impair the natural biological community.

#### Background information and water quality data

River des Peres flows southeast through St. Louis, Mo., to the Mississippi River. For most of its length, River des Peres is a cement storm water ditch, channelized (straightened and deepened) to remove runoff

---

<sup>1</sup> As of October 30, 2009, the water body ID for this stream has been changed to 1710 from 1711. This change will be reflected on future 303(d) lists.

as quickly as possible from its 114 square-mile watershed into the Mississippi River. A portion of it has also been channeled underground. Its watershed includes the city of St. Louis and 42 St. Louis County municipalities.

The chloride impairment of this river is based on data gathered by the U.S. Geological Survey from 2003-2007. A water body is judged to be impaired if chronic or acute numeric criteria<sup>2</sup> are exceeded on more than one occasion during the last three years for which data is available. On the classified segment of River des Peres (Site 1), two chloride measurements in the last three years of data have exceeded the chronic criterion (Figure 1). Thus, “River des Peres at St. Louis” (Site 1) is judged to be impaired by chloride.

The WBID 1710U-01 segment of River des Peres is an unclassified stream. Only narrative criteria and acute numeric criteria apply to unclassified streams. River des Peres at Site 2 (Harlan Park) has exceeded the acute criterion value twice during the last three years for which data is available. Thus, the unclassified portion of River des Peres downstream of Harlan Park is judged to be impaired by chloride.

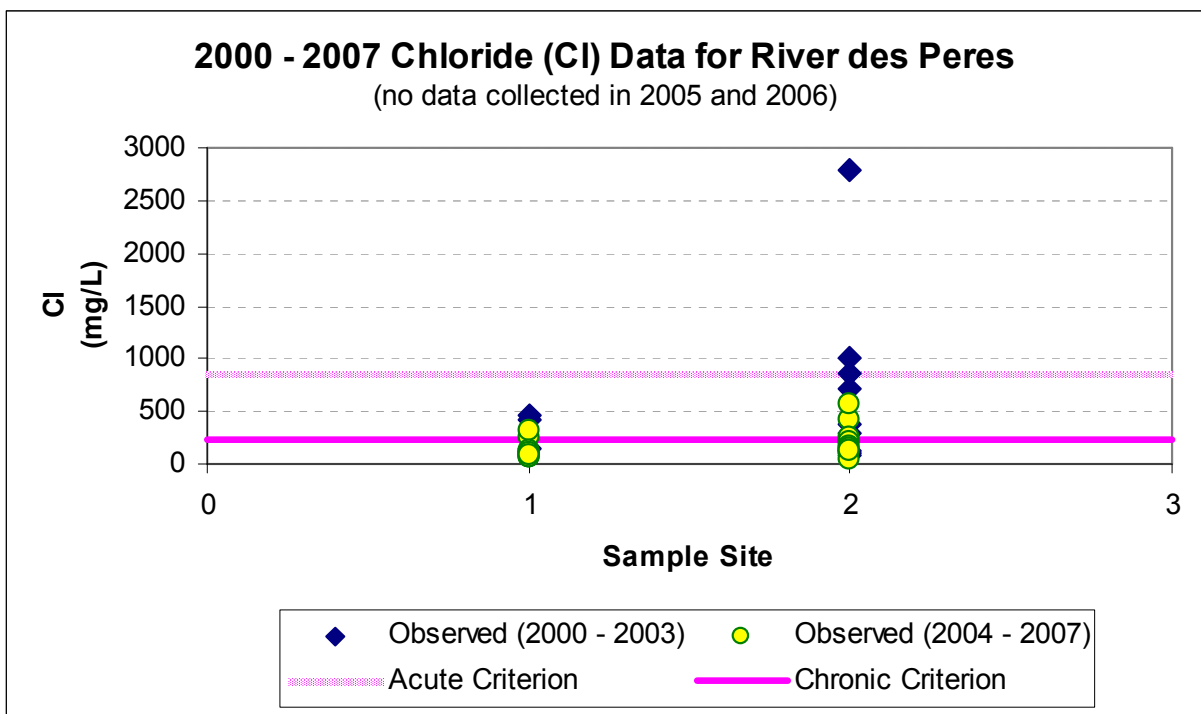


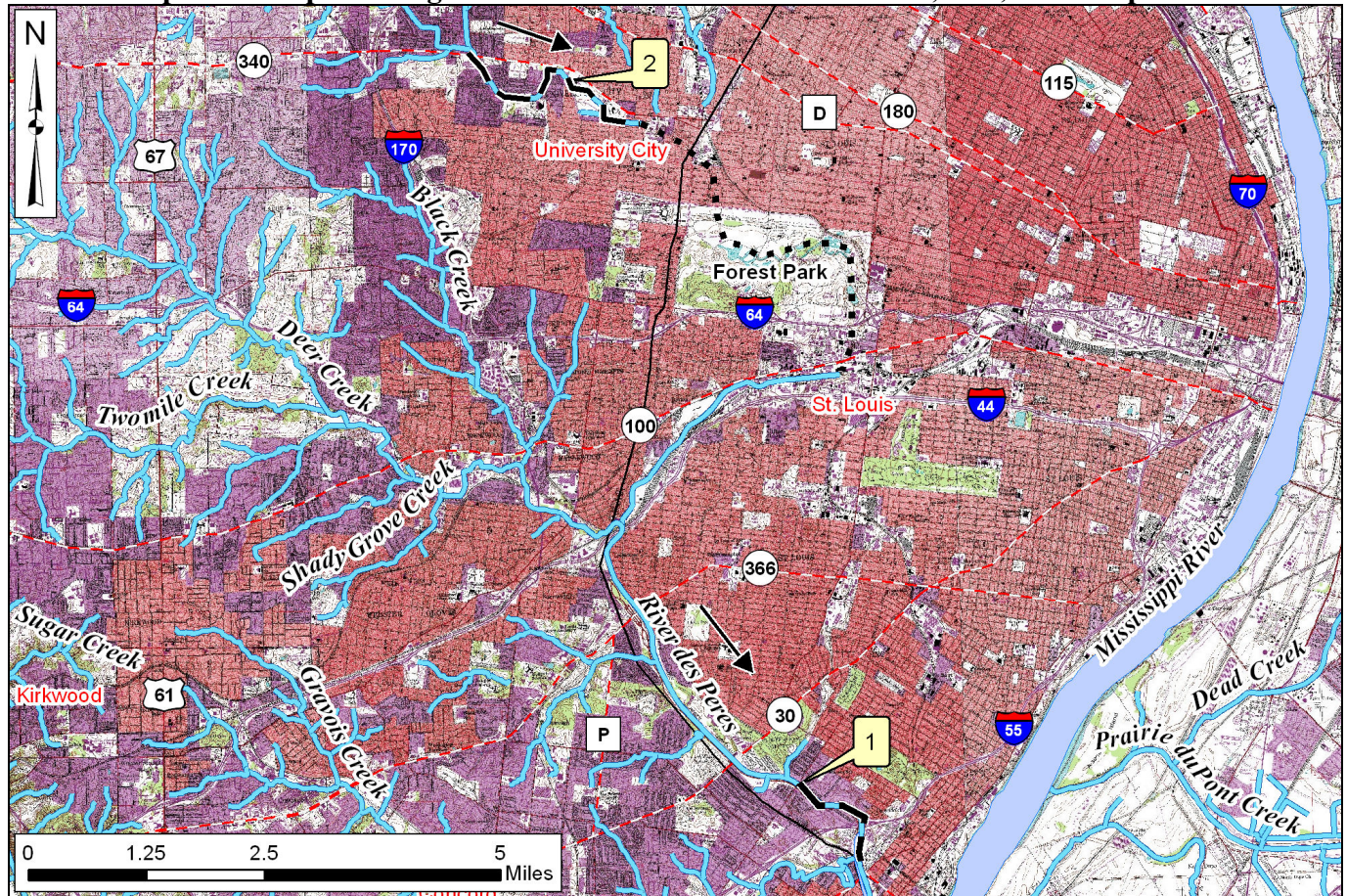
Figure 1

In addition to chloride, bacteria counts in the river are high. They are much higher than the state water quality criteria, but statutes and laws do not provide a way for the river to be listed for this pollutant. That is because the beneficial use of Whole Body Contact Recreation (swimming) is not presently assigned to the River des Peres, and a water body must have this use for the state criteria for bacteria to apply. While these high levels of bacteria are not “official exceedances” of the water quality standards, they do represent conditions unsafe for swimming or wading.

<sup>2</sup> Acute criteria apply to short exposures to toxic conditions that aquatic creatures can survive without harm. Chronic criteria apply to conditions producing adverse effects on aquatic life or wildlife following long-term exposure but having no readily observable effect over a short time period. Chronic criteria are much lower than the acute criteria.

It is worth noting that a water body does not have to be on the 303(d) List to be restored, though being listed could help attract funds and certainly attracts attention. There are currently groups of local citizens and businesses working together to improve this river. One such group is the River des Peres Watershed Coalition. Local stakeholder involvement is critical to the success of any river, stream or lake improvement project.

**Map of the impaired segments of River des Peres in St. Louis, Mo., and sample sites**



**Sample Sites**  
 1 – River des Peres at St. Louis (1710)  
 2 – River des Peres at Harlan Park (1710U-01)

**For more information call or write:**

Missouri Department of Natural Resources, Water Protection Program  
 P.O. Box 176, Jefferson City, MO 65102-0176  
 1-800-361-4827 or 573-751-1300 office or 573-522-9920 fax  
 Program Home Page: [dnr.mo.gov/env/wpp/index.html](http://dnr.mo.gov/env/wpp/index.html)