

Missouri Department of Natural Resources

Total Maximum Daily Load Information Sheet

Little Drywood Creek

Water Body Segment at a Glance:

County: Vernon
Nearby Cities: Nevada and Moundville
Length of impaired segment: 17 miles
Pollutant: Low Dissolved Oxygen.
Source: None Given
Water Body ID: 1325



State Map Showing Location of Watershed

Scheduled for TMDL development: 2016

Description of the Problem

Designated Beneficial uses of Little Drywood Creek

- Livestock and Wildlife Watering
- Protection of Warm Water Aquatic Life
- Protection of Human Health (Fish Consumption)
- Whole Body Contact Recreation

Use that is impaired

- Protection of Warm Water Aquatic Life

Standards that apply

- In the Missouri Water Quality Standards, found in 10 CSR 20-7.031 Table A, the criterion for dissolved oxygen, or DO, in streams is a minimum of 5.0 mg/L (milligrams per liter or parts per million).

Background information and Water Quality Data

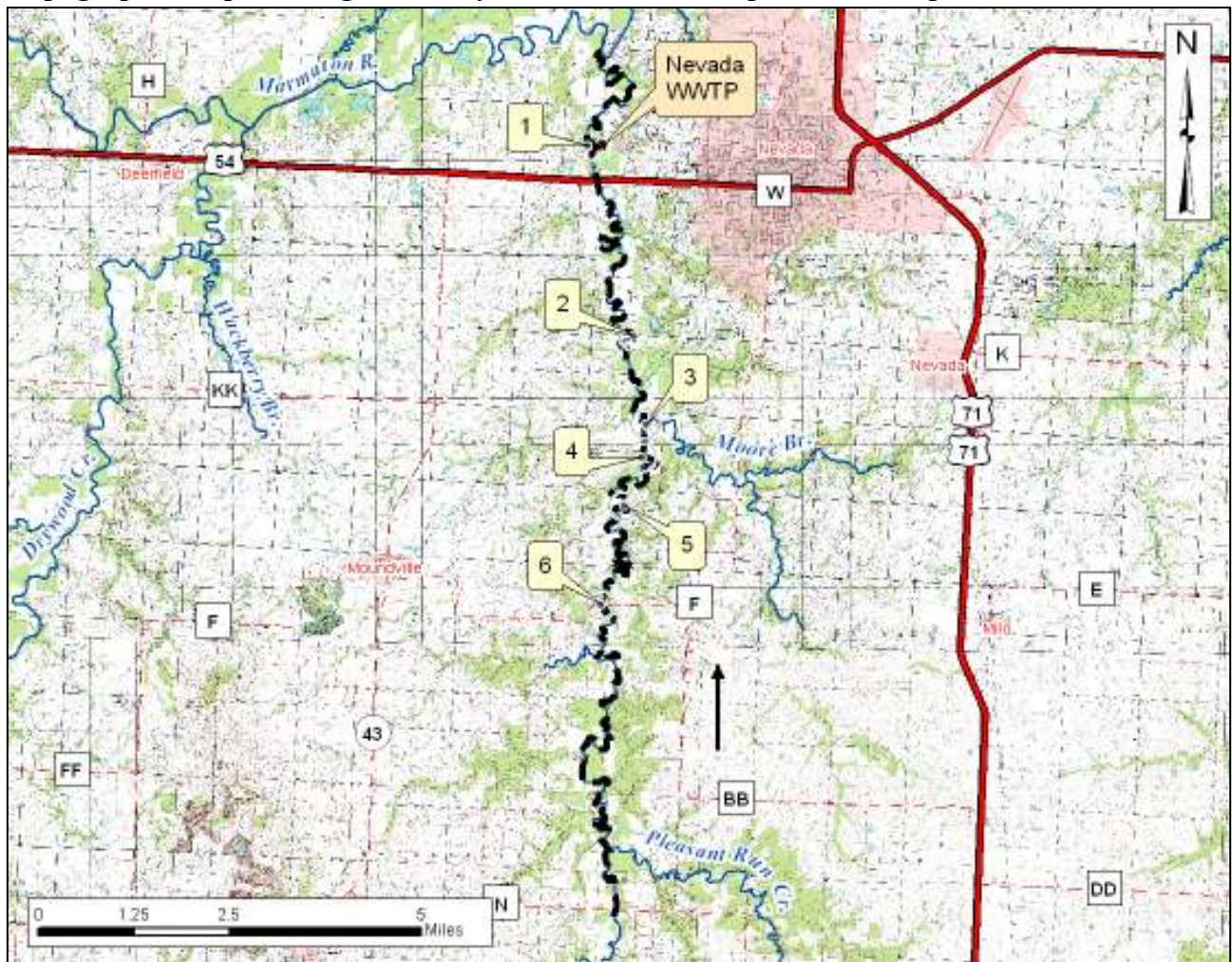
Little Drywood Creek flows north and joins the Marmaton River just west of the town of Nevada in Vernon County. The impairment is based on continuous data sondes¹ deployed by MEC Water Resources Inc. and the department at multiple locations in the creek for intervals between three

¹ A sonde is a scientific instrument that gathers and records data automatically. It can be left a location for extended periods of time. The operator will periodically download the data.

weeks and three months. MEC deployed sondes from 2006-07 and the department deployed them in 2008.

Water quality conditions in Little Drywood Creek are not protective of aquatic life. Dissolved oxygen is important as many aquatic organisms require high levels of oxygen to survive. For dissolved oxygen, if more that 10 percent of measurements in a water body fail to meet the water quality criterion that water body is judged to be impaired. In the case of Little Drywood Creek, 8,029 of 12,778 samples (62.8 percent) gathered by the sondes did not meet the water quality criterion. It is not known what is causing the dissolved oxygen to be low.

Topographic map showing Little Drywood Creek and Department sample sites



--- Impaired Segment → Direction of flow

- Sample Sites**
- 1 – L. Drywood Creek at 0.8 miles north of U.S. Highway 54
 - 2 – L. Drywood Creek at Quail Road
 - 3 – L. Drywood Creek at County Road 1375
 - 4 – L. Drywood Creek 5.5 miles SSW of Nevada
 - 5 – L. Drywood Creek at Stokes Road
 - 6 – L. Drywood Creek at State Highway F

The final Little Drywood Creek TMDL will be based on the most current available data and information. For TMDL status or additional information, please contact the Water Protection Program at:

Missouri Department of Natural Resources
Water Protection Program
P.O. Box 176, Jefferson City, MO 65102-0176
1-800-361-4827 or 573-751-1300 office or 573-522-9920 fax
Program Home Page: dnr.mo.gov/env/wpp/index.html