

Dark Creek

Water Body Segment at a Glance:

County:	Randolph
Nearby Cities:	Clifton Hill and Huntsville
Length of impairment:	8 miles
Pollutant:	Low Dissolved Oxygen
Source:	None Given
Water Body ID:	0690



State map showing location of watershed

See also sulfate Information Sheet for Dark Creek

Scheduled for TMDL Development: 2016

Description of the Problem

Designated Beneficial uses of Dark Creek

- Livestock and Wildlife Watering
- Protection of Warm Water Aquatic Life
- Protection of Human Health (Fish Consumption)

Use that is impaired

- Protection of Warm Water Aquatic Life

Standards that apply

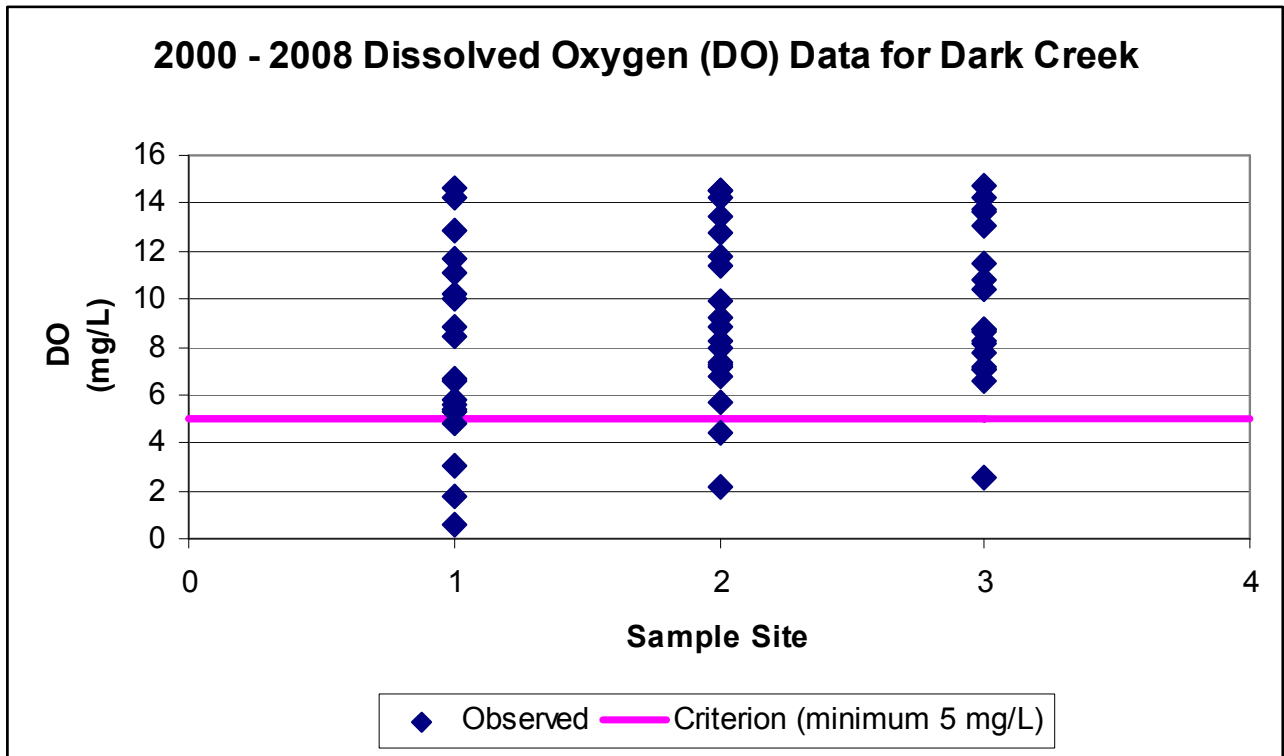
- In the Missouri Water Quality Standards, found in 10 CSR 20-7.031 Table A, the criterion for dissolved oxygen, or DO, in streams is a minimum of 5 mg/L (milligrams per liter or parts per million).

Background information and water quality data

Dark Creek is located between Moberly and Thomas Hill Reservoir in Randolph County. It flows southwest into the East Fork Chariton River. A TMDL for sulfate due to abandoned mine land was written and approved by the U.S. Environmental Protection Agency in 2004. The low dissolved oxygen impairment is based on data collected by the department from 2000 to 2008.

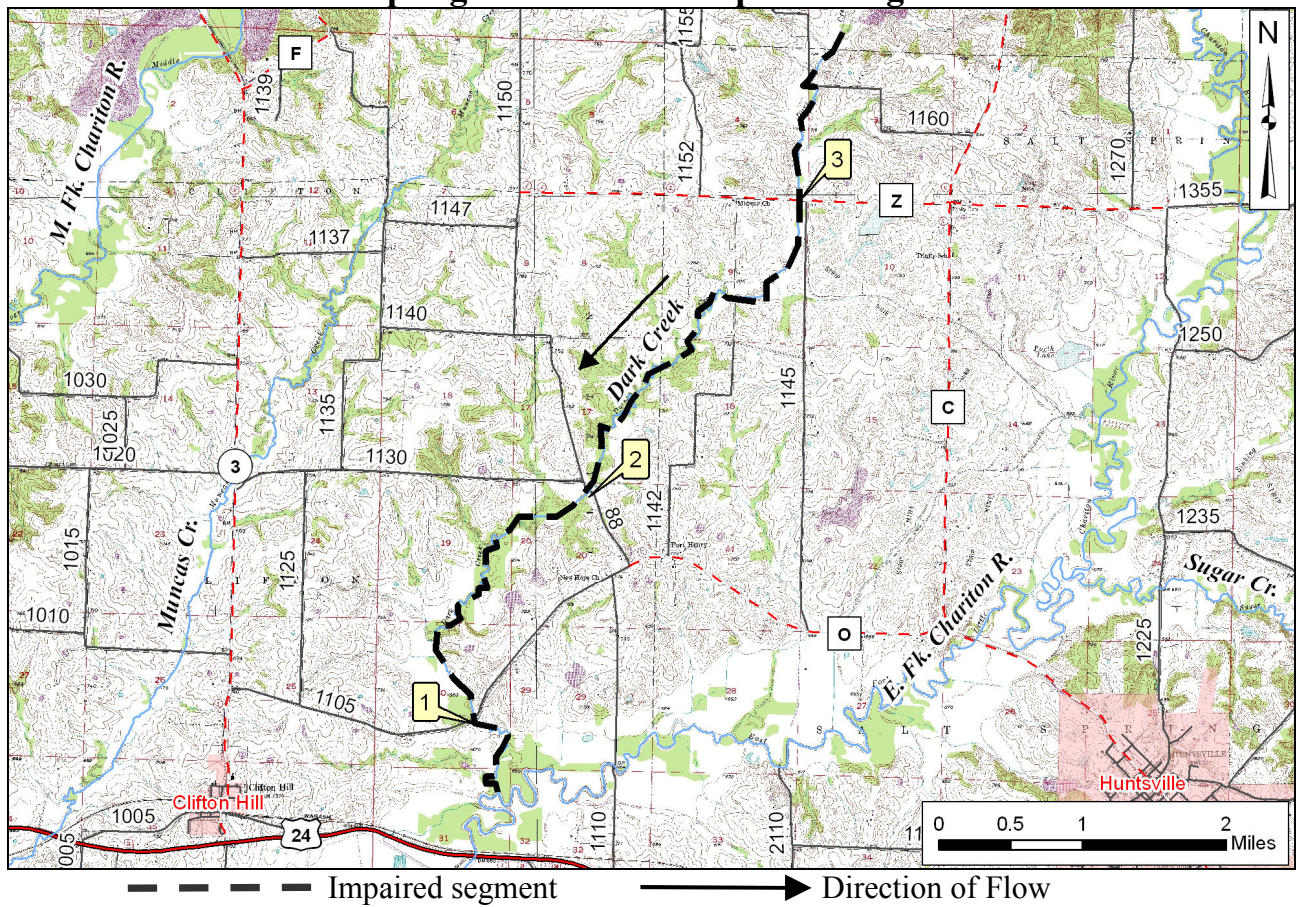
Oxygen levels in Dark Creek do not always meet the water quality criterion of 5 mg/L. Dissolved oxygen is important as many aquatic organisms require high levels of oxygen to survive. For dissolved oxygen, if more than 10 percent of measurements in a water body fail to meet the water quality criterion, that water body is judged to be impaired. In the case of Dark Creek, seven of 57

samples (12.3 percent) did not meet the water quality criterion. It is not known what is causing the dissolved oxygen to be low.



A map showing the locations of the sample sites follows on the next page.

Map of Dark Creek in Randolph County, Mo., Showing Sampling Sites and the Impaired Segment



Site Index
1 – Dark Creek at County Road 1105
2 – Dark Creek at County Road 88
3 – Dark Creek at State Highway Z

For more information call or write:
 Missouri Department of Natural Resources
 Water Protection Program
 P.O. Box 176, Jefferson City, MO 65102-0176
 1-800-361-4827 or 573-751-1300 office
 573-522-9920 fax
 Program Home Page: dnr.mo.gov/env/wpp/index.html