

Missouri Department of Natural Resources

Total Maximum Daily Load Information Sheet

Sni-a-bar Creek

Water Body Segment at a Glance:

Counties:	Jackson and Lafayette
Nearby Cities:	Oak Grove, Blue Springs
Length of impaired segment:	32 miles
Pollutant:	Low Dissolved Oxygen
Source:	None Given
Water Body ID:	0399



State Map Showing Location of Watershed

Scheduled for TMDL development: 2016

Description of the Problem

Beneficial uses of Sni-a-bar Creek

- Livestock and Wildlife Watering
- Protection of Warm Water Aquatic Life
- Protection of Human Health (Fish Consumption)
- Whole Body Contact Recreation
- Secondary Contact Recreation

Use that is impaired

- Protection of Warm Water Aquatic Life

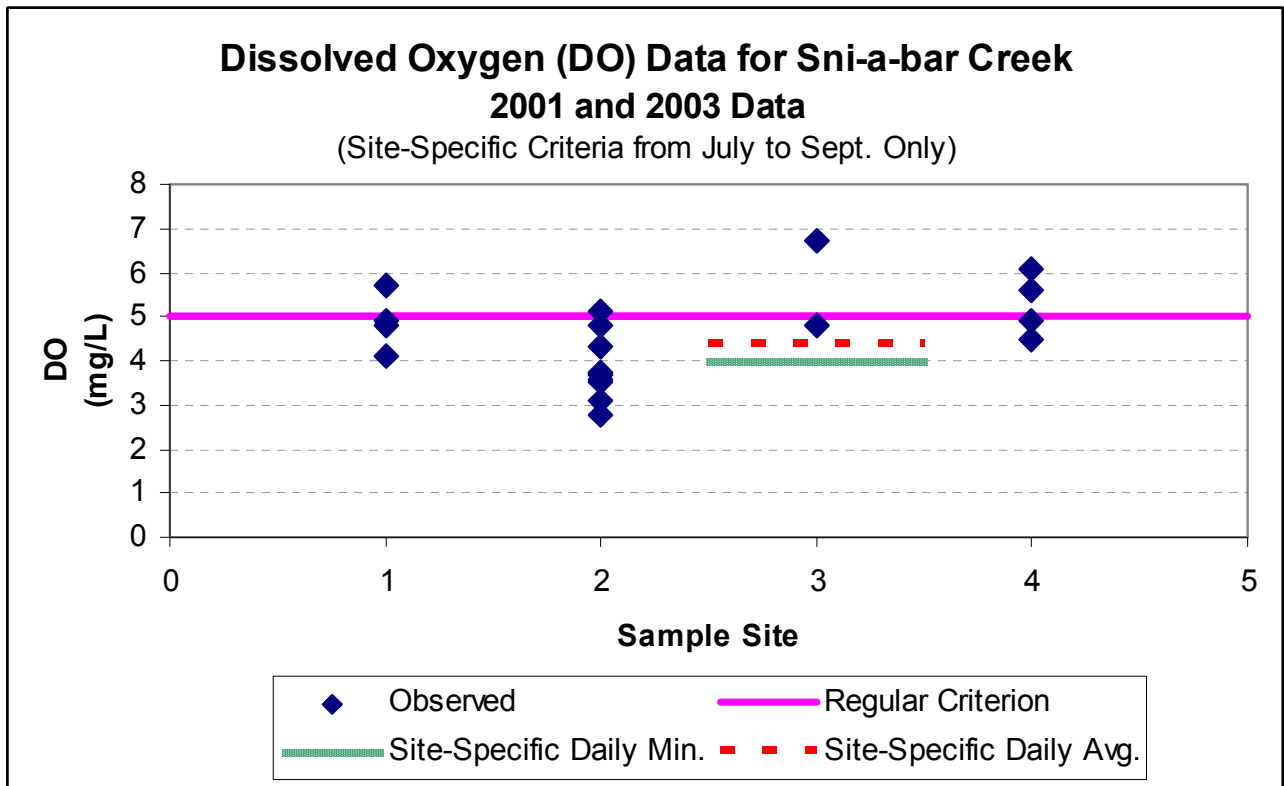
Standards that apply

- In the Missouri Water Quality Standards, found in 10 CSR 20-7.031 Table A, the criterion for dissolved oxygen, or D.O., in streams is a minimum of 5 mg/L (milligrams per liter or parts per million).
- Table K of Missouri's Water Quality Standards also provide site-specific D.O. criteria for Sni-a-bar Creek. These criteria of a daily average of 4.4 mg/L and a daily minimum of 4 mg/L apply only to the 5-mile portion of the stream from the confluence of Horseshoe Creek to the entry of the tributary carrying discharge from the Blue Springs Sni-a-bar wastewater treatment plant (WWTP). These site-specific criteria are only effective from July through September. These criteria expire Oct. 31, 2014.

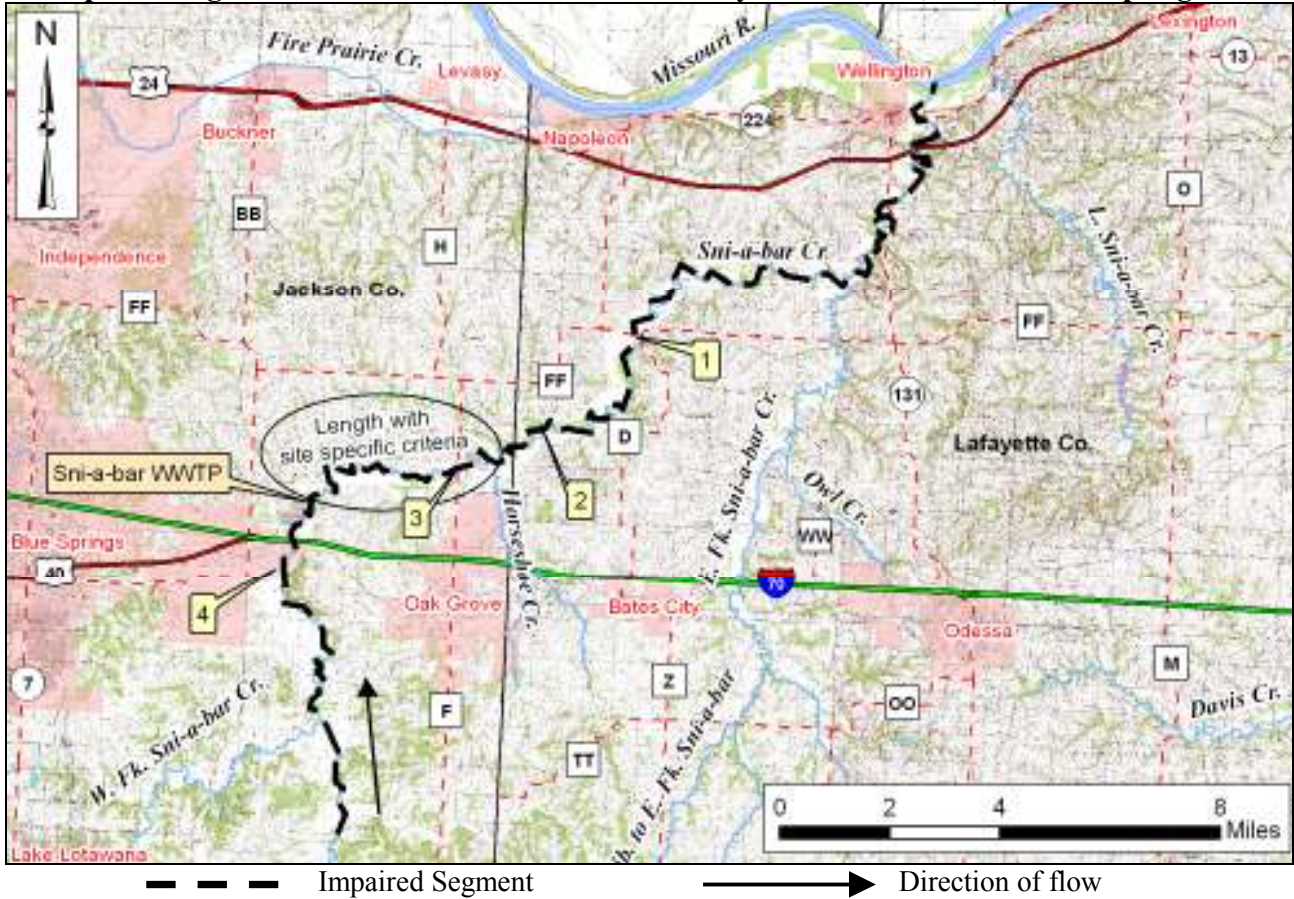
Background information and water quality data

Sni-a-bar Creek is a tributary to the Missouri River that flows northeast through Lafayette County, Mo. The low dissolved oxygen impairment is based on data collected by the department from 2001 and 2003.

Water quality conditions in Sni-a-bar Creek are not protective of aquatic life. Dissolved oxygen is important as many aquatic organisms require high levels of oxygen to survive. For dissolved oxygen, if more than 10 percent of measurements in a water body fail to meet the water quality criterion, that water body is judged to be impaired. In the case of Sni-a-bar Creek, 15 of 20 samples (75 percent) did not meet the water quality criterion. It is not known what is causing the dissolved oxygen to be low.



Map showing Sni-a-bar Creek in Jackson and Lafayette counties, Mo., and sampling sites



- Sample Sites**
- 1 – Sni-a-bar Cr. 6.1 miles below Horseshoe Cr.
 - 2 – Sni-a-bar Cr. 2 miles below Horseshoe Cr.
 - 3 – Sni-a-bar Cr. 5.3 miles below Sni-a-bar WWTP
 - 4 – Sni-a-bar Cr. at State Hwy AA, Grain Valley

The final Sni-a-bar Creek TMDL will be based on the most current available data and information. For TMDL status or additional information, please contact the Water Protection Program at:

Missouri Department of Natural Resources
 Water Protection Program
 P.O. Box 176, Jefferson City, MO 65102-0176
 1-800-361-4827 or 573-751-1300 office
 573-522-9920 fax
 Program Home Page: dnr.mo.gov/env/wpp/index.html