



**MISSOURI**  
DEPARTMENT OF  
NATURAL RESOURCES

---

# Concentrated Animal Feeding Operations (CAFOs)



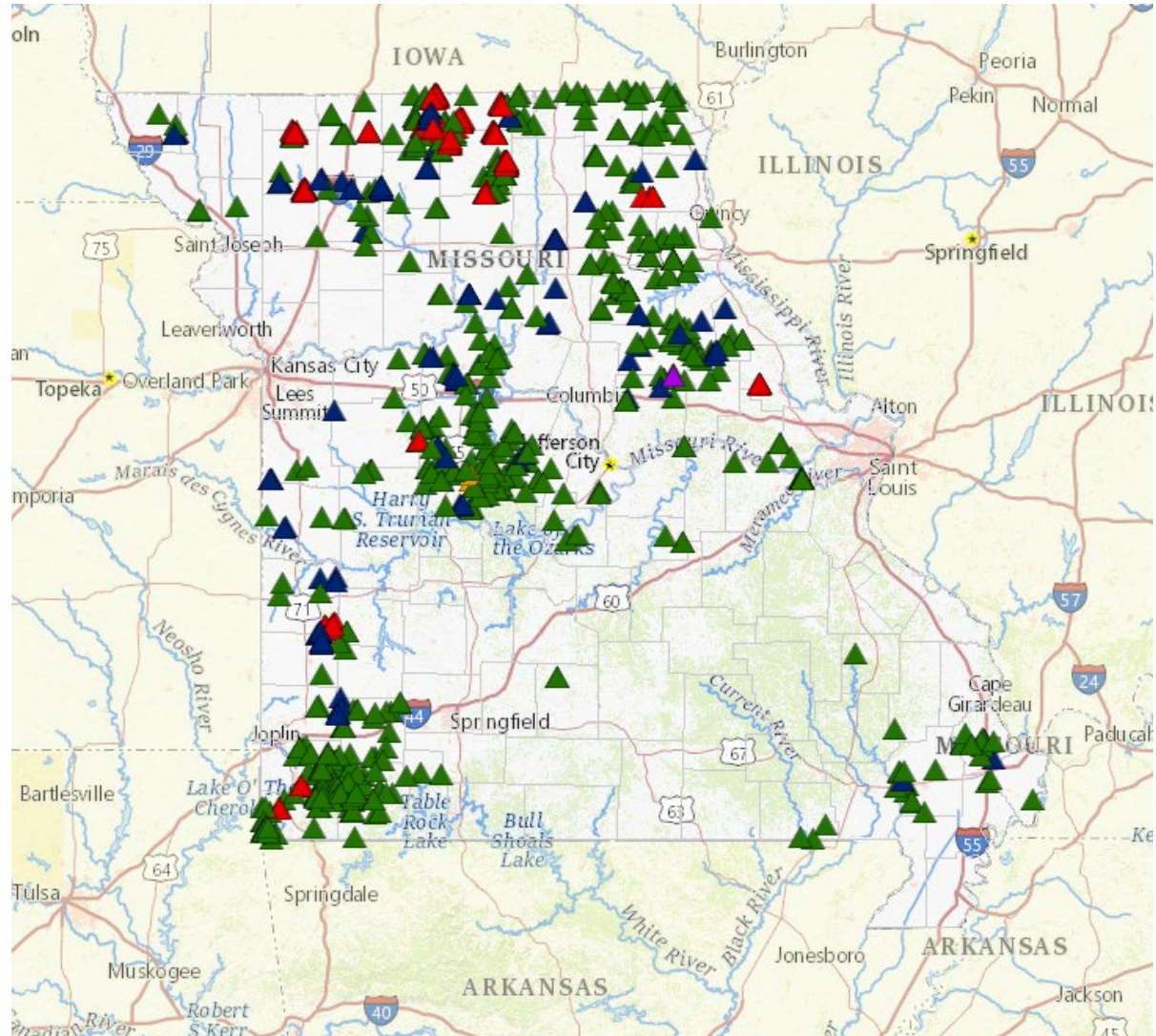
**MISSOURI**  
DEPARTMENT OF  
NATURAL RESOURCES

Class 1A: 7,000+ AUE (Red)  
19 facilities

Class 1B: 3,000 - 6,999 AUE (Blue)  
52 facilities

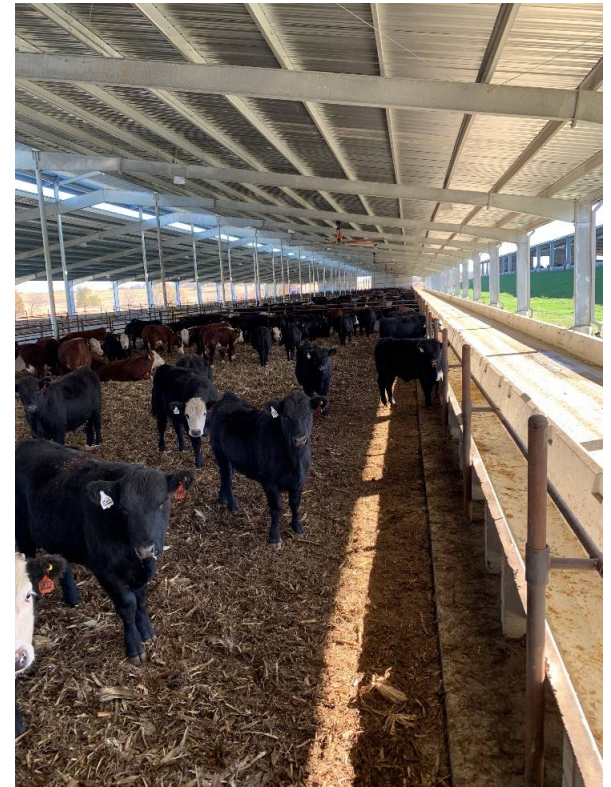
Class 1C: 1,000 - 2,999 AUE (Green)  
432 facilities

**503 Regulated CAFO Facilities**



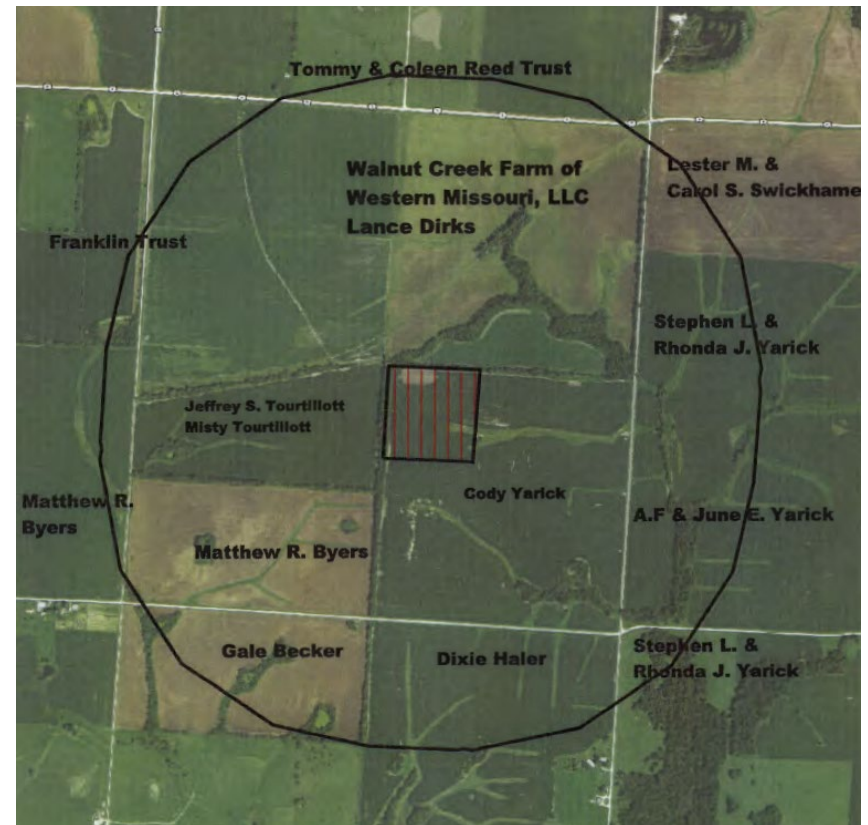
# CAFOs and Permitting

- Continuing Authority
- Neighbor Notice
- Buffer Distances
- Animal Management Plans
- Manure Generation & Storage
- Nutrient Management Plans
- Land Application



# Location

- Buffer Distance
  - Residences
    - 1,000 feet
    - 2,000 feet
    - 3,000 feet
  - Wells, Streams, Lakes, etc
- Neighbor Notice
  - 3 x buffer distance



# Senate Bill 391

- Joint Committee on Agriculture
- New Bill limits County Commissions/Health Board ordinances (no more stringent than state)
- Doubled the neighbor notice distance
- No construction prior to *operating* permit



# Senate Bill 391

- Land Application (liquid CAFO waste at other facilities/farms)
  - Setbacks established
  - 50 feet property boundary
  - 300 feet from public drinking water
  - 100 feet from streams / 35 feet if vegetated