

2014 Air Quality Report

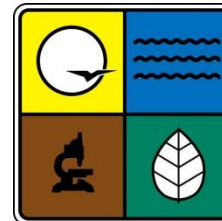
Stephen Hall

Air Quality Analysis Section

Air Pollution Control Program

St. Louis Area Monitoring Agencies Meeting, May 15, 2014

St. Louis County Library, St. Louis, MO



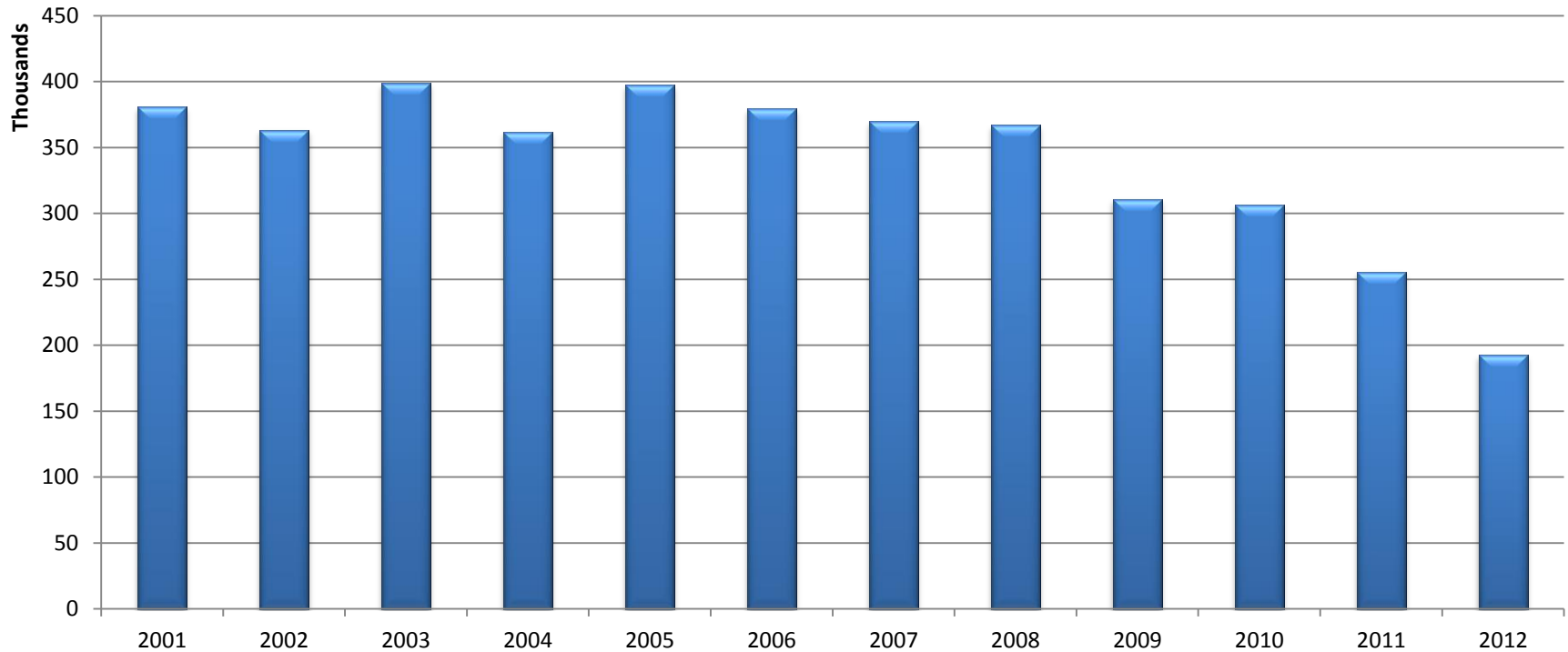
**MISSOURI
DEPARTMENT OF
NATURAL RESOURCES**

Presentation Overview

- Emissions Inventory Trends
- Ambient Air Monitoring Trends
- New Projects
- Website Resources

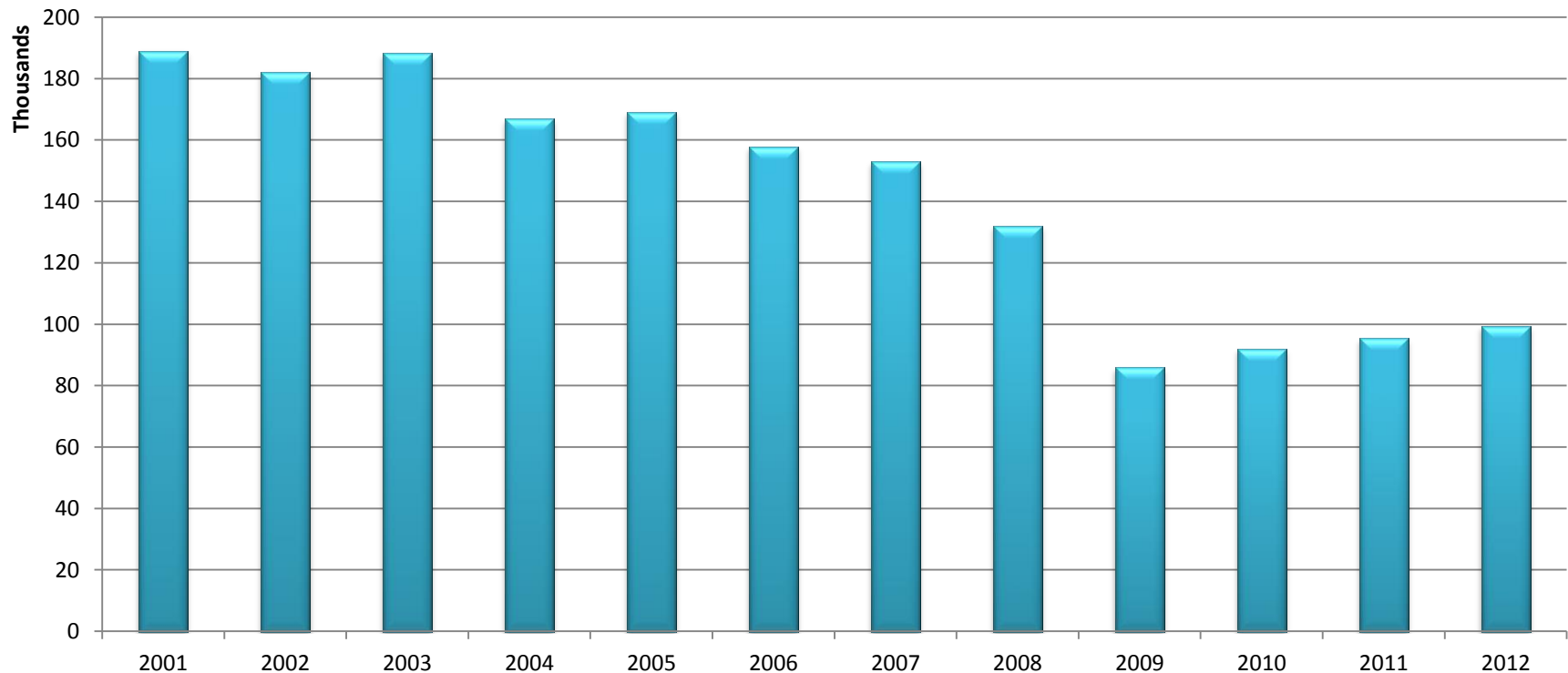
Sulfur Dioxide (SO₂) Point Source Emissions

Sulfur Dioxide
Thousand Tons per Year

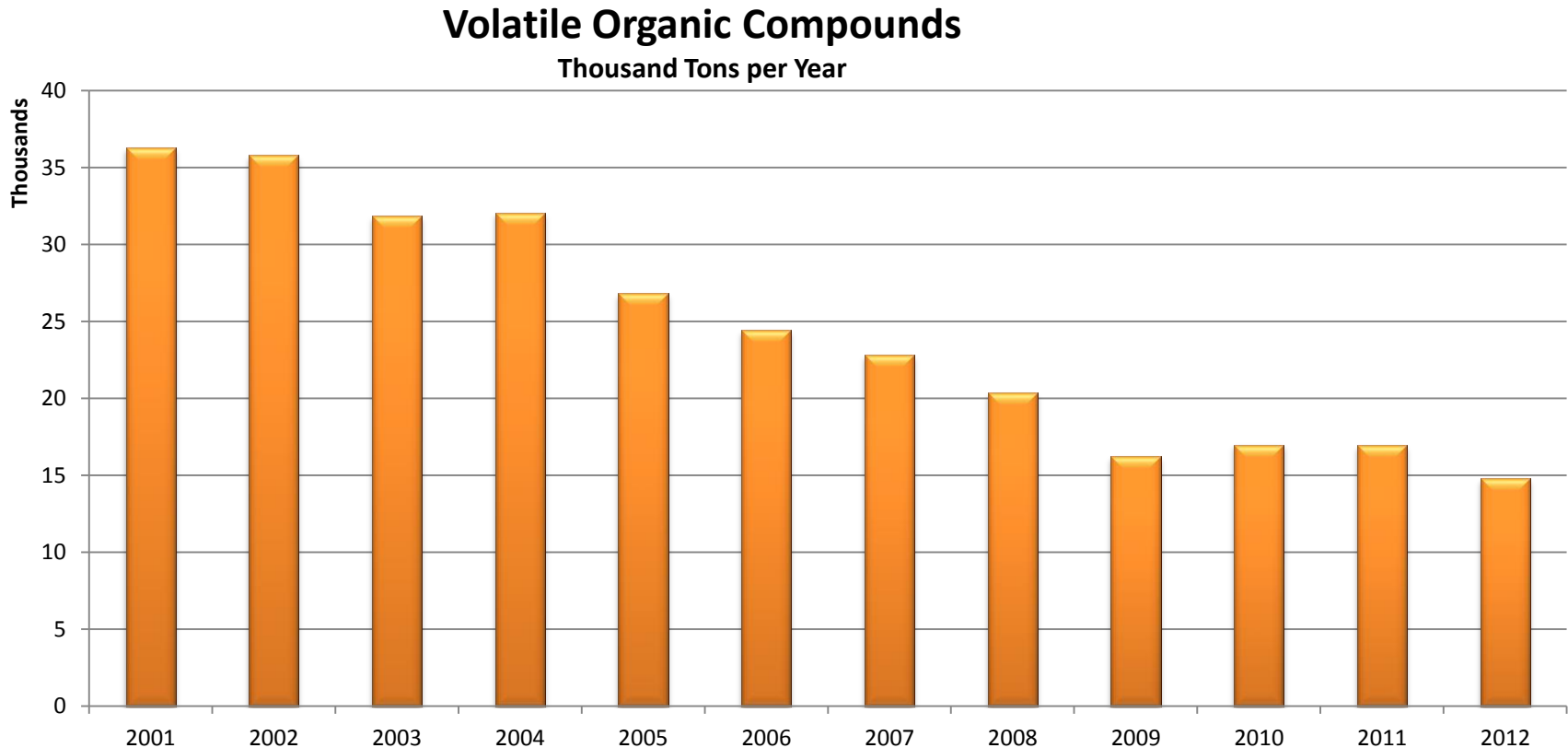


Nitrogen Dioxide (NO₂) Emissions

Nitrogen Dioxide
Thousand Tons per Year

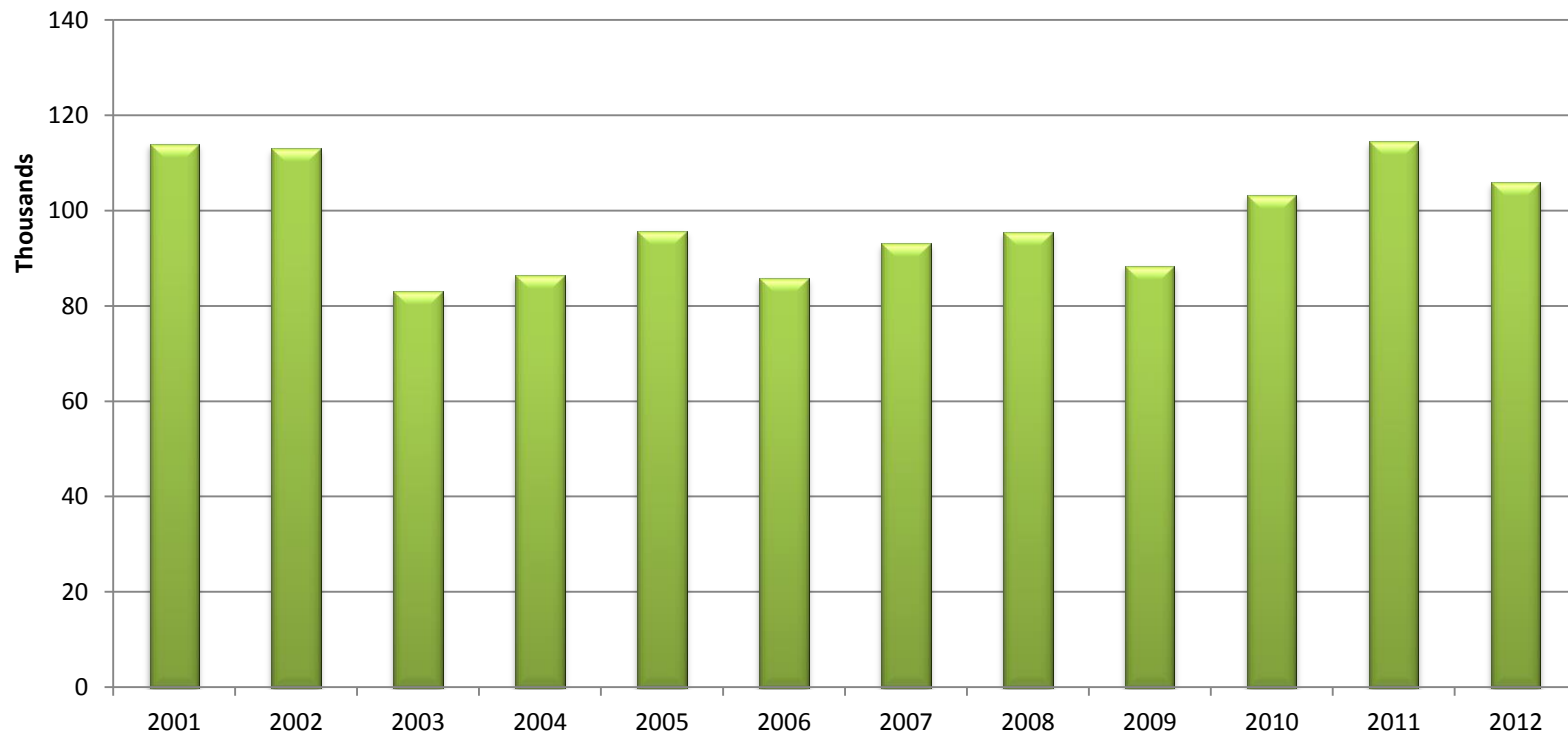


Volatile Organic Compounds (VOC)



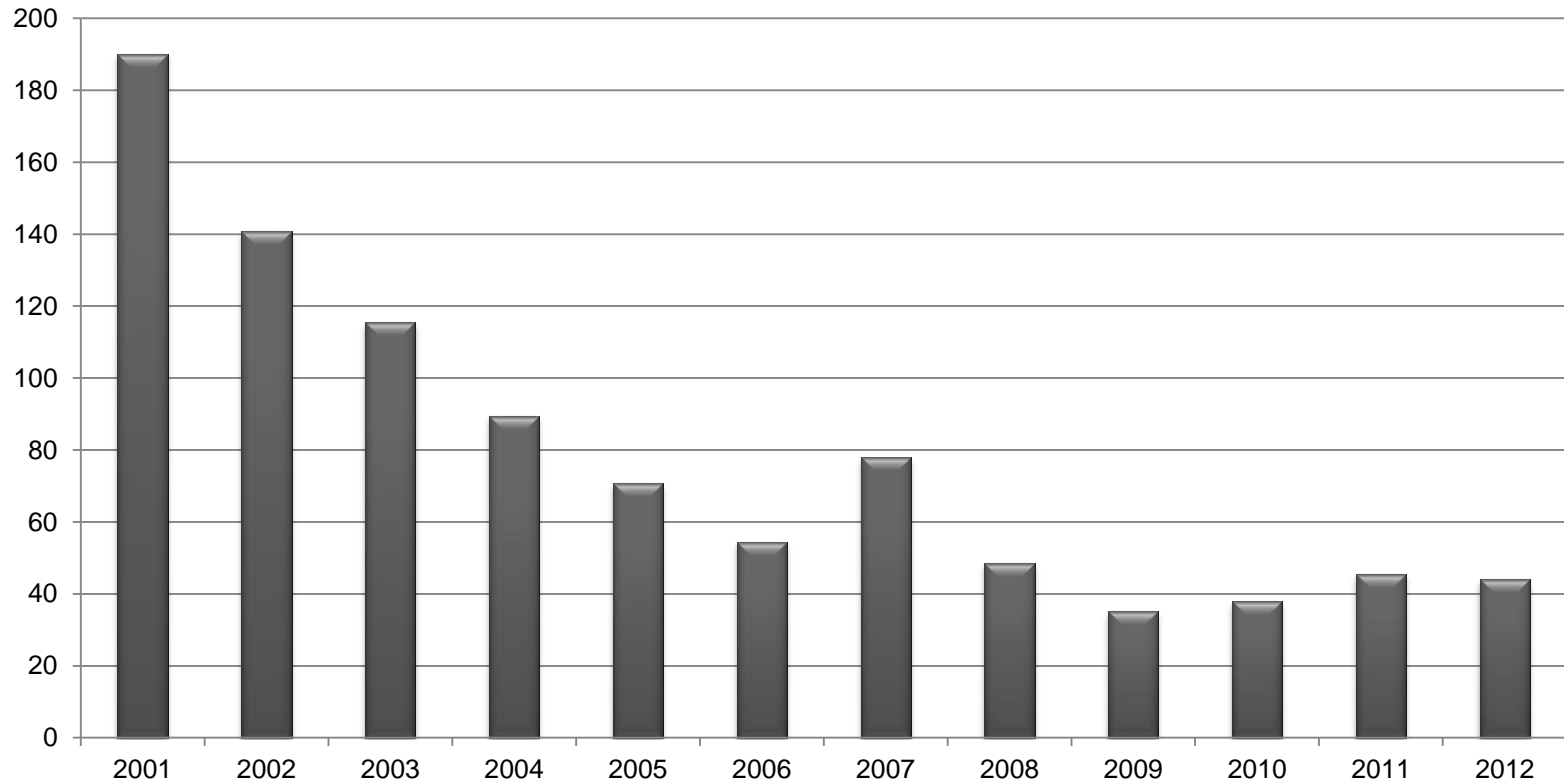
Carbon Monoxide (CO) Emissions

Carbon Monoxide
Thousand Tons per Year



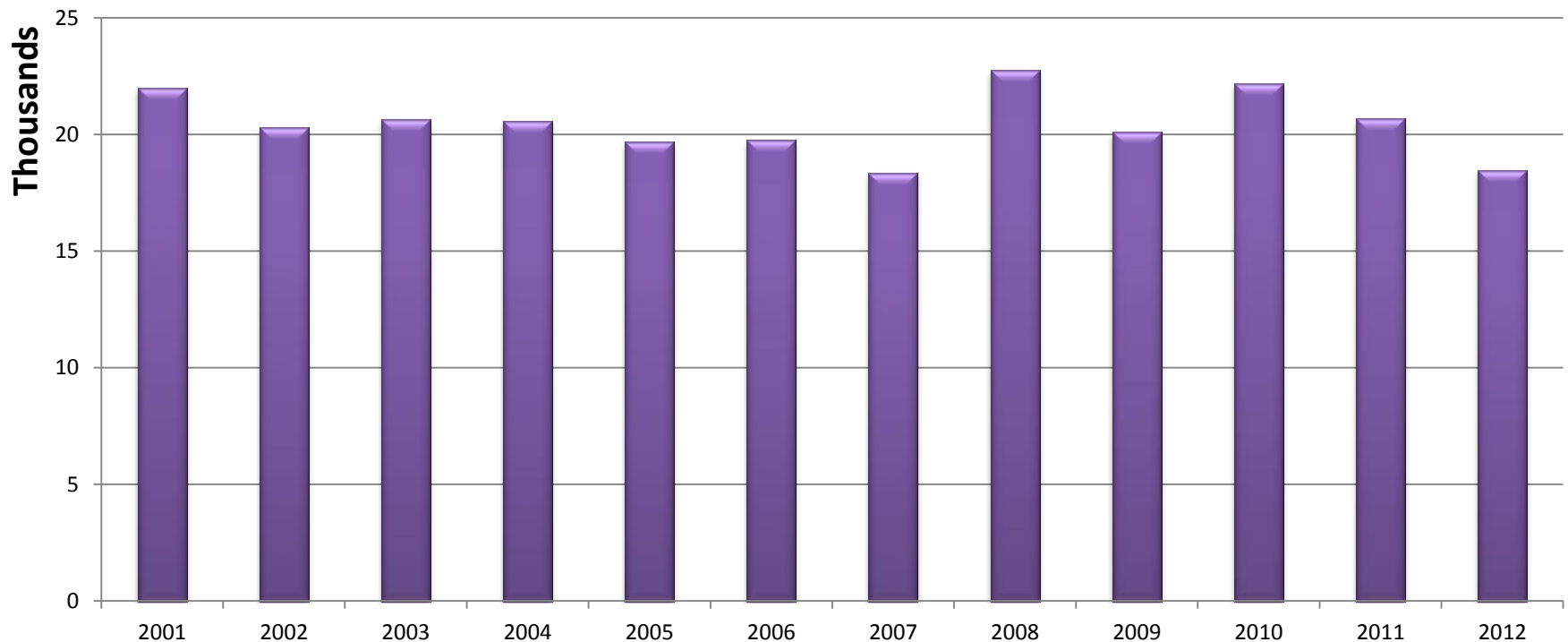
Airborne Lead (Pb) Emissions

Airborne Lead
Tons per Year



Particulate Matter (PM₁₀)

Particulate Matter (PM₁₀)
Thousand Tons per Year



Ambient Air Monitoring Trends

- Area wide criteria pollutant monitoring indicates decreasing trends over time.
- Revisions to the SO₂, NO₂, Lead, and Ozone NAAQS and revised monitoring network requirements has 'lowered the bar' for some areas.
- Some single source and area specific NAAQS violations are being addressed.

NAAQS Being Met

- **NO₂**: No Missouri sites violate the 2010 1-hour (100 ppb) standard or annual standard (53 ppb)
– Near roadway NO₂ sites – two sites deployed in 2013. No issues yet...
- **PM_{2.5}**: No Missouri sites violate the 1997 annual standard, 2006 24-hour PM_{2.5} standard, or the 2012 Annual (12 µg/m³) and 24-hour (35 µg/m³) standard.
– Near roadway PM_{2.5} sites- two monitors deployed in 2013. No issues yet...
- **CO**: No Missouri sites violate the 1-hour (35 ppm) or 8-hour (9 ppm) standard.
– Near roadway CO sites- two monitors deployed in 2013. No issues yet...

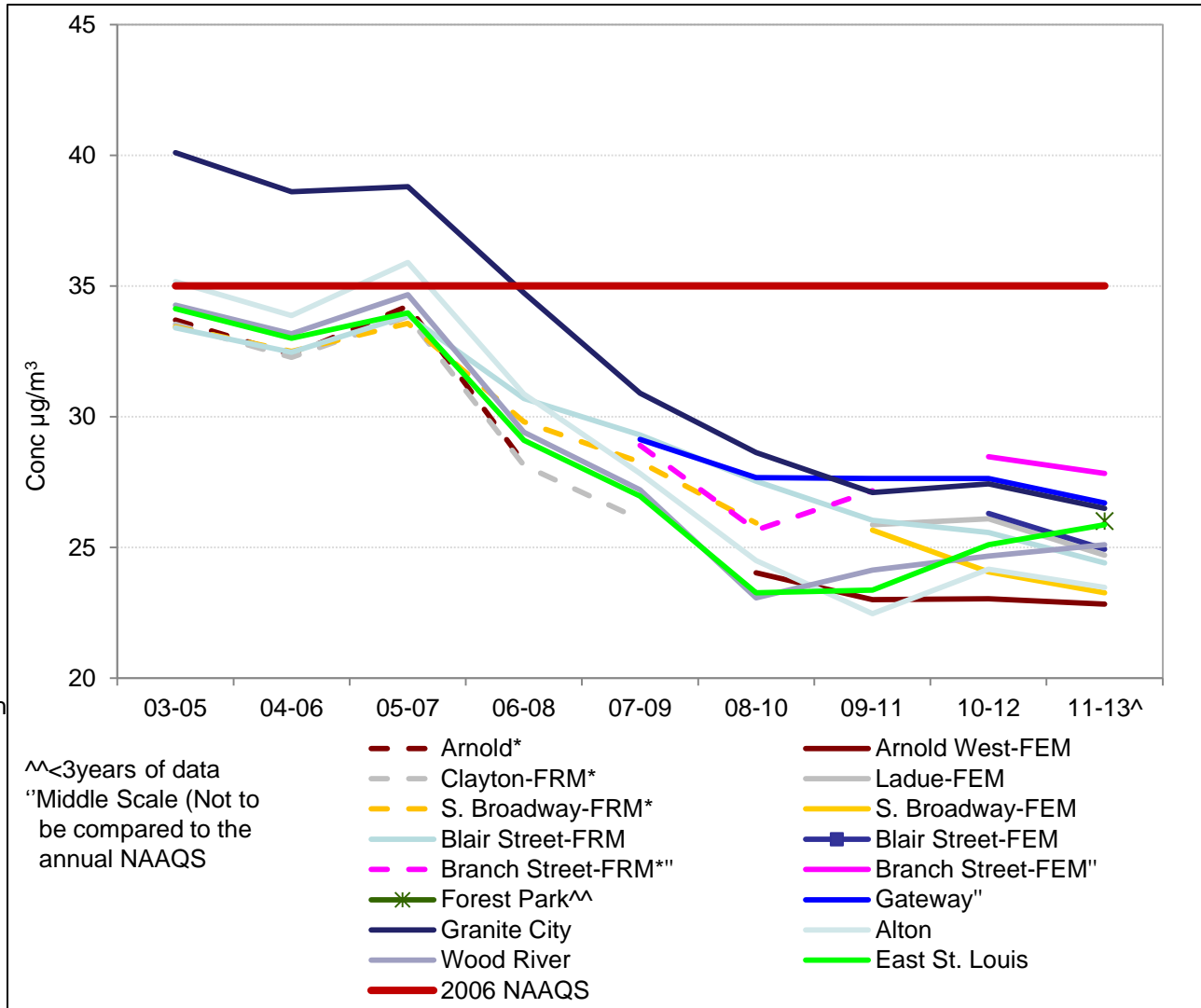
PM_{2.5}

- All MO Monitors are in compliance of the Annual and 24-hour PM_{2.5} NAAQS.
- The Illinois side of the St. Louis CBSA has monitors violating the annual NAAQS. (EPA determines if MO sources contribute significantly to Illinois' violating monitors)
- PM_{2.5} long term trends are downward.



PM_{2.5} 24-hour Average Ambient Air Monitoring Trends

➤ MO and KS Sites in Compliance



^MO sites Quality assured data through
 Dec 31st, 2013.

*Discontinued monitor

Forest Park (Near-road monitor)
 2013 98th Percentile: **20.6** µg/m³
 (January-December)

2014 98th Percentile (YTD to 5/09/14)
36.2 µg/m³
 (Less than 3 years of data)

^^<3years of data
 "Middle Scale (Not to
 be compared to the
 annual NAAQS

Data Source: Environmental Protection Agency Air Quality System (EPA AQS), AMP480 Report and AMP450 Report



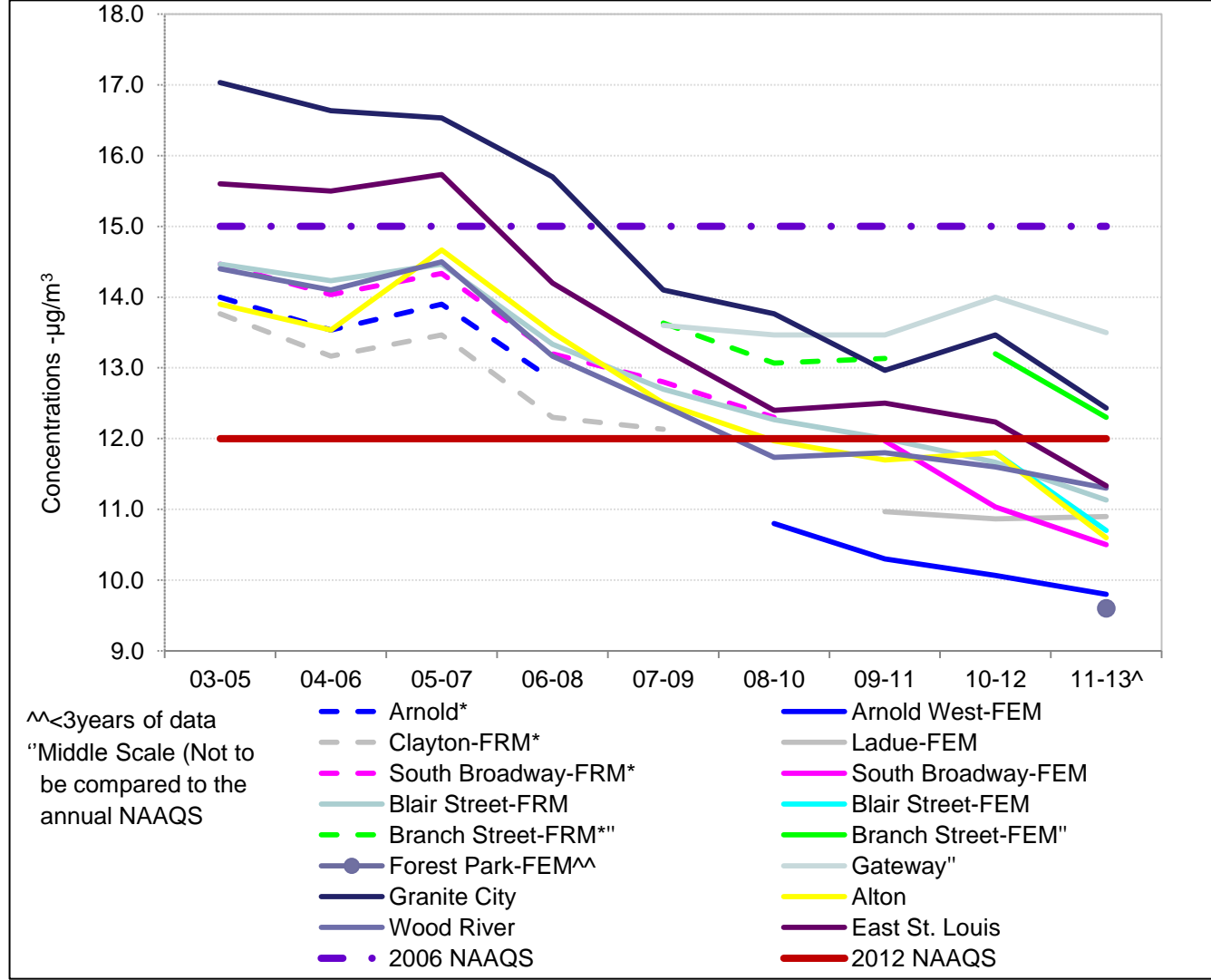
PM_{2.5} Annual Average Ambient Air Monitoring Trends

➤ MO and KS Sites in Compliance

^MO sites Quality assured data through
 Dec 31st, 2013.

*Discontinued monitor

Forest Park (Near-road monitor)
 2013 Average: **9.6** µg/m³
 (January-December)
 2014 Average (YTD to 5/09/14)
11.3 µg/m³
 (Less than 3 years of data)

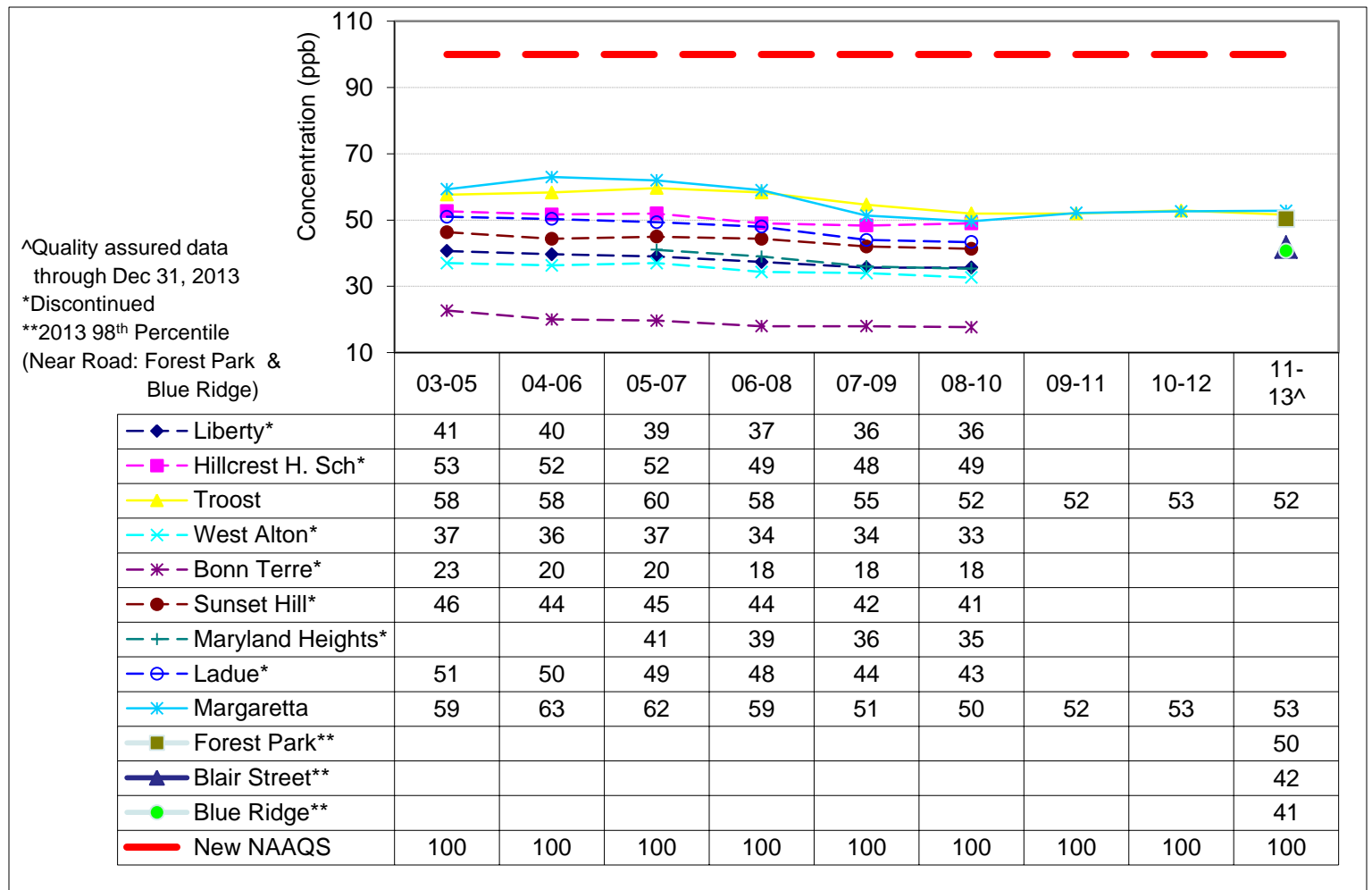


Data Source: Environmental Protection Agency Air Quality System (EPA AQS), AMP480 Report and AMP450 Report



NO₂

Missouri 3-year Average of the 98th Percentile of the Daily 1-hr Maximum NO₂ Concentrations
(1-hr NAAQS = 100ppb)

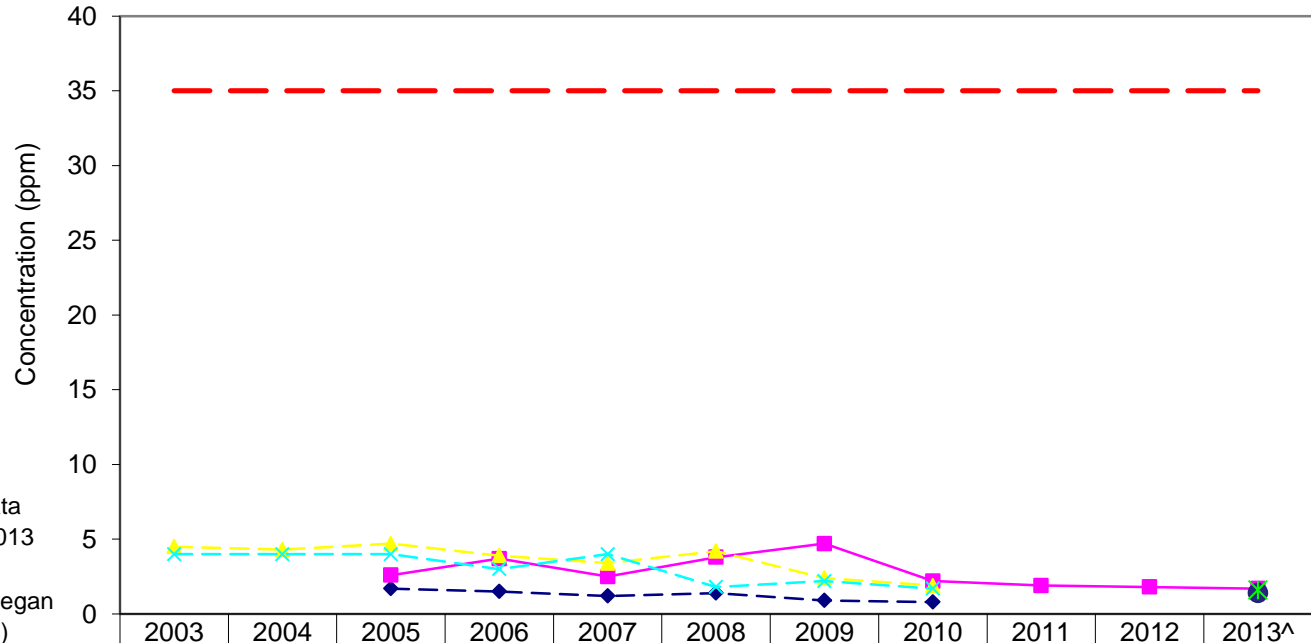


Data Source: Environmental Protection Agency Air Quality System (EPA AQS), AMP480 Report

CO

1-Hour 2nd Maximum Annual Averages of the Carbon Monoxide (CO) Concentrations

1-hr NAAQS = 35 Parts Per Million (ppm)



[^]Quality assured data through Dec 31, 2013

*Discontinued

**Near-Road site (Began monitoring in 2013)

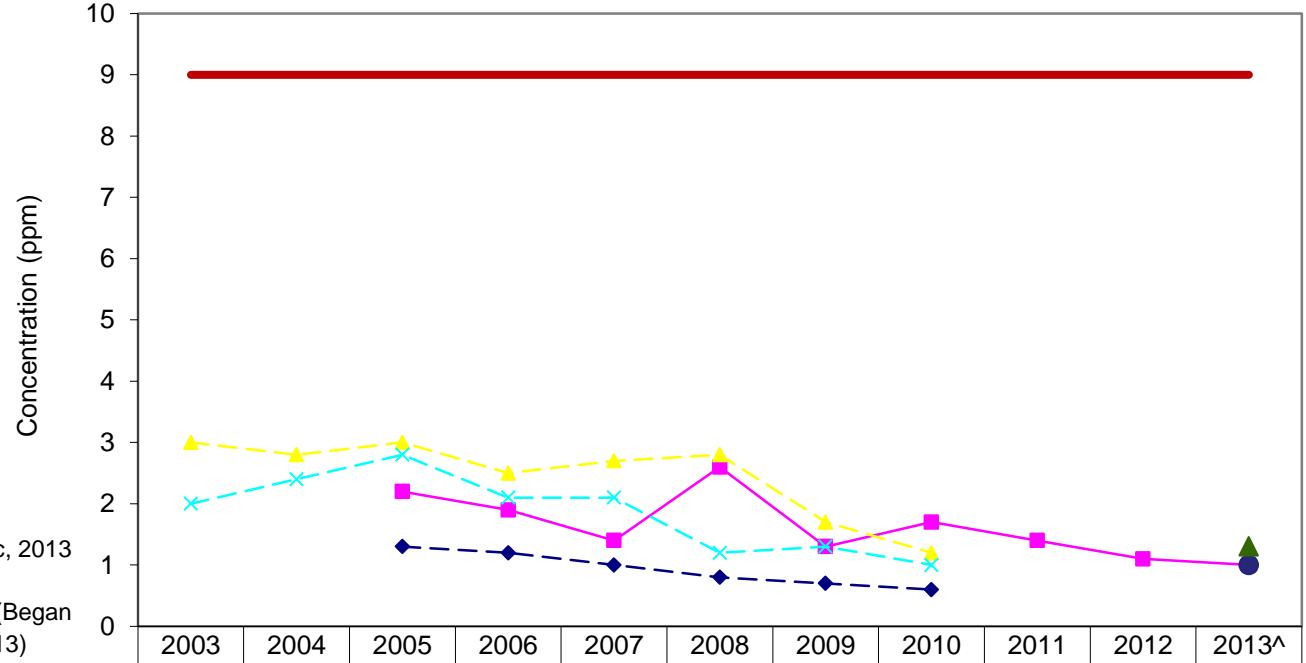
| | | | | | | | | | | | |
|------------------------|-----|-----|-----|-----|-----|-----|-----|-----|-----|-----|-----|
| ◆ - Sunset Hills* | | | 1.7 | 1.5 | 1.2 | 1.4 | 0.9 | 0.8 | | | |
| ■ - Blair Street | | | 2.6 | 3.7 | 2.5 | 3.8 | 4.7 | 2.2 | 1.9 | 1.8 | 1.7 |
| ▲ - Margaretta* | 4.5 | 4.3 | 4.7 | 3.9 | 3.4 | 4.2 | 2.4 | 1.9 | | | |
| ✧ - MSU* | 4.0 | 4.0 | 4.0 | 3.0 | 4.0 | 1.8 | 2.2 | 1.7 | | | |
| ● - Forest Park** | | | | | | | | | | | 1.4 |
| ✱ - Blue Ridge, I-70** | | | | | | | | | | | 1.6 |
| - - 1-hour NAAQS | 35 | 35 | 35 | 35 | 35 | 35 | 35 | 35 | 35 | 35 | 35 |

Data Source: Environmental Protection Agency Air Quality System (EPA AQS), AMP450 Report



CO

8-Hour 2nd Maximum Annual Averages of the Carbon Monoxide (CO) Concentrations
 8-hr NAAQS = 9 Parts Per Million (ppm)



[^]Quality assured data through Dec, 2013
 *Discontinued
 **Near-Road site (Began monitoring in 2013)

| | | | | | | | | | | | |
|------------------------|-----|-----|-----|-----|-----|-----|-----|-----|-----|-----|-----|
| ◆ - Sunset Hills* | | | 1.3 | 1.2 | 1.0 | 0.8 | 0.7 | 0.6 | | | |
| ■ - Blair Street | | | 2.2 | 1.9 | 1.4 | 2.6 | 1.3 | 1.7 | 1.4 | 1.1 | 1.0 |
| ▲ - Margaretta* | 3.0 | 2.8 | 3.0 | 2.5 | 2.7 | 2.8 | 1.7 | 1.2 | | | |
| × - MSU* | 2.0 | 2.4 | 2.8 | 2.1 | 2.1 | 1.2 | 1.3 | 1.0 | | | |
| ● - Forest Park** | | | | | | | | | | | 1.0 |
| ▲ - Blue Ridge, I-70** | | | | | | | | | | | 1.3 |
| — 8-hour NAAQS | 9 | 9 | 9 | 9 | 9 | 9 | 9 | 9 | 9 | 9 | 9 |

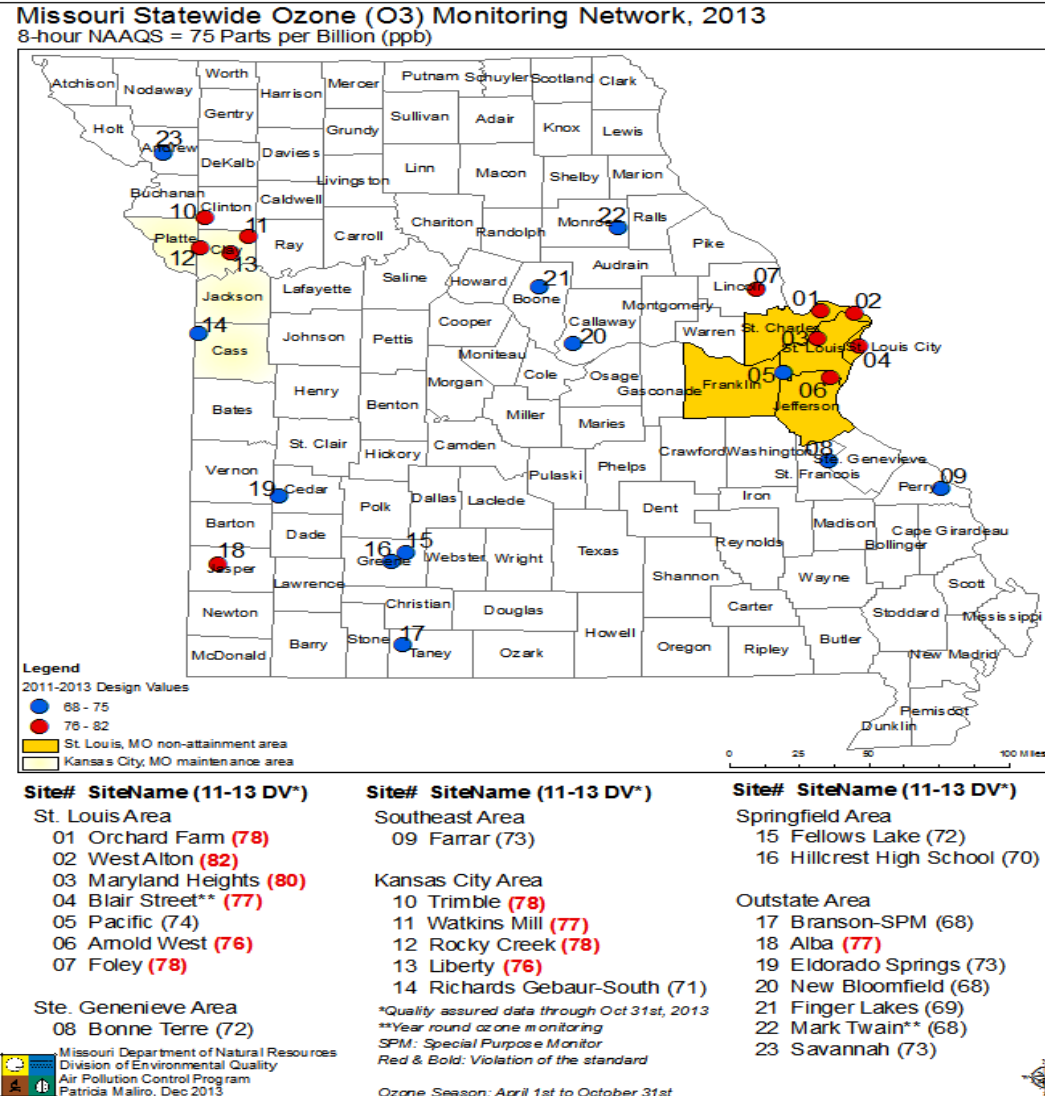
Data Source: Environmental Protection Agency Air Quality System (EPA AQS), AMP450 Report

Opportunities for Improvement

- **Ozone:** Six MO sites in the St. Louis area, four MO sites in Kansas City, and one site in Jasper Co. violate the 2008 standard of 75 ppb based on 2011-2013 data (2013 data is preliminary) The 2012 ozone season is driving design values.
 - Monitoring period over which EPA may designate areas determines path forward.
- **SO₂:** Two areas: Jackson (partial), and Jefferson counties (partial), violate the 2010 1-hr standard.
 - *Attainment Demonstrations are being developed*
- **Lead:** Three areas: Herculaneum, Iron/Dent/Reynolds (partial counties) (Buick), and Holt Co. (Exide) violate the 2008 3-month standard of 0.15 µg/m³. One intermittent violation in the Glover MO area (not expected to be recurring).
 - *Attainment Demonstrations for each area (sans Glover) are being developed or have been submitted for SIP revisions.*
- **PM₁₀:** Two small areas in St. Louis City and Carthage violate the 24-hour of 150 µg/m³
 - Small area of impact, single source or cluster of sources. *Compliance plans/strategy for each area are being developed or have been submitted for SIP revisions.*



Ozone Monitoring Network

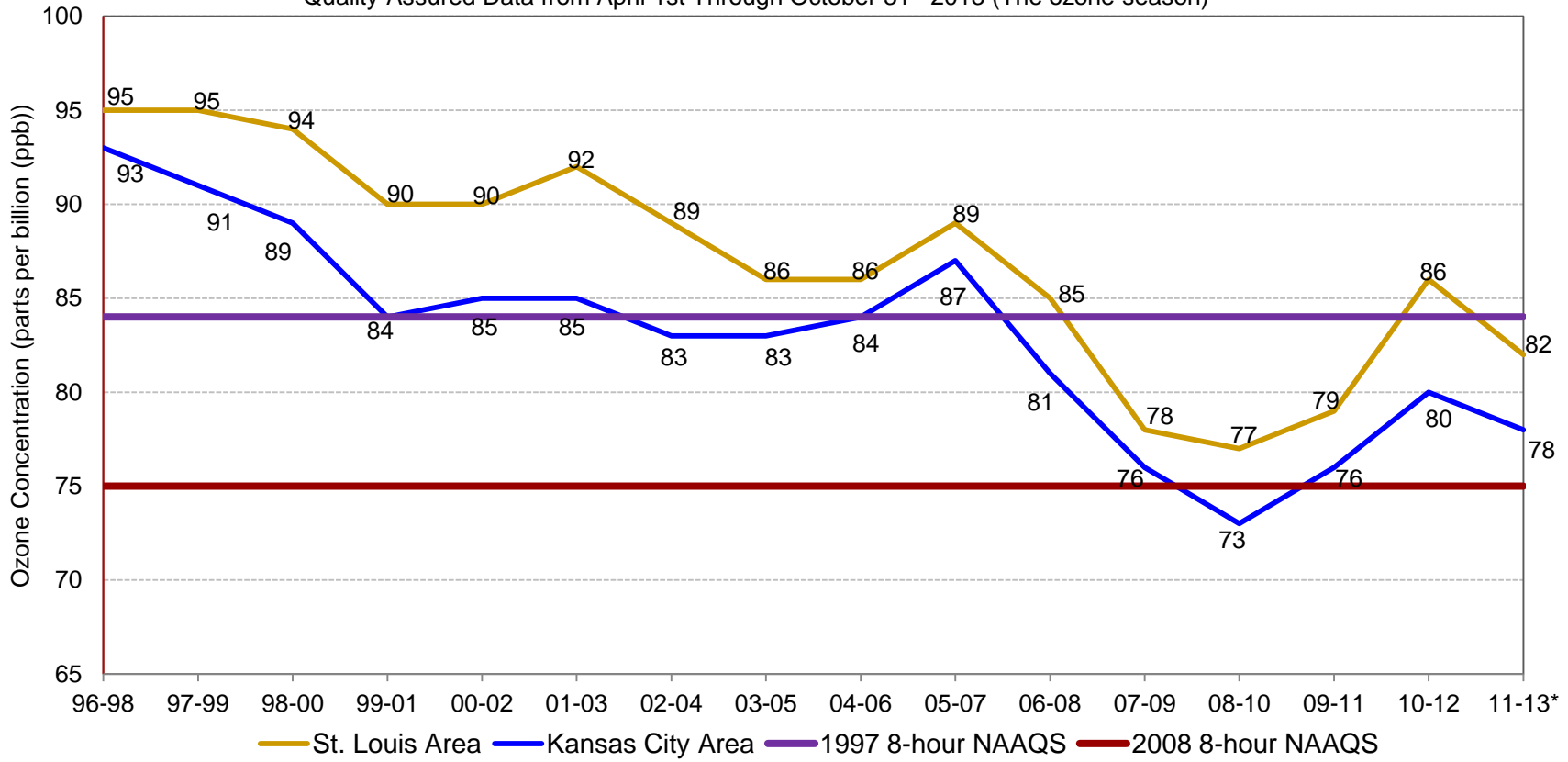




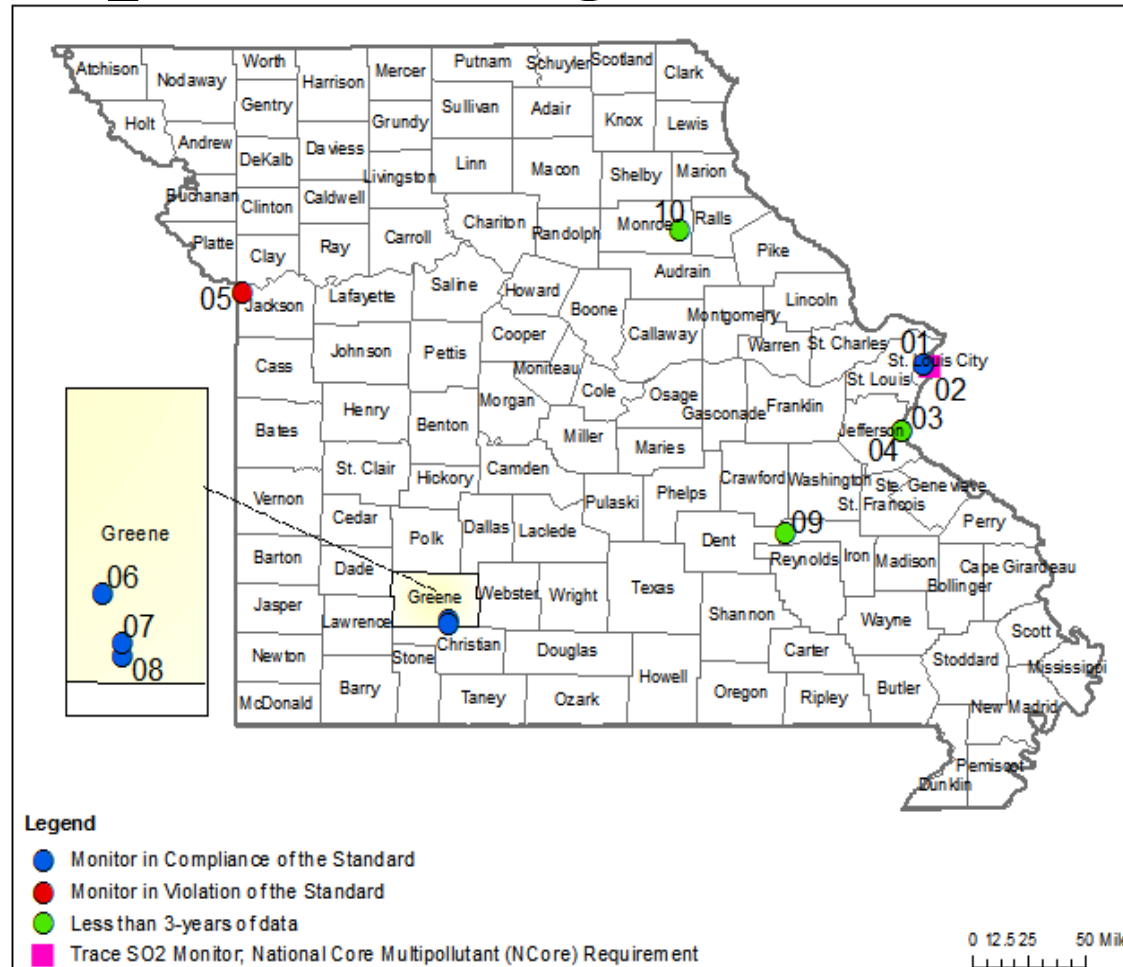
Ozone (O₃) Ambient Air Monitoring

1996-2013 8-hour O₃ Design Value Trends (ppb)
 St. Louis & Kansas City

*Quality Assured Data from April 1st Through October 31st 2013 (The ozone season)



SO₂ Monitoring Network, 2013



Site# Site Name (11-13 Design Values*(ppb))

St. Louis Area, MO

- 01 Margaretta (29)
- 02 Blair Street (47)
- 03 Herculaneum, Main Street** (172[^])
- 04 Herculaneum, Mott Street (192[^])

Kansas City, MO

- 05 Troost (162)

Springfield Area, MO

- 06 South Charleston (44)
- 07 Wildwood Lane[^]** (49)
- 08 James River-South[^] (44)

Outstate Area

- 09 Buick NE (90[^])
- 10 Mark Twain State Park (8[^])

*Quality assured data through December 31st, 2013

**Discontinued monitor

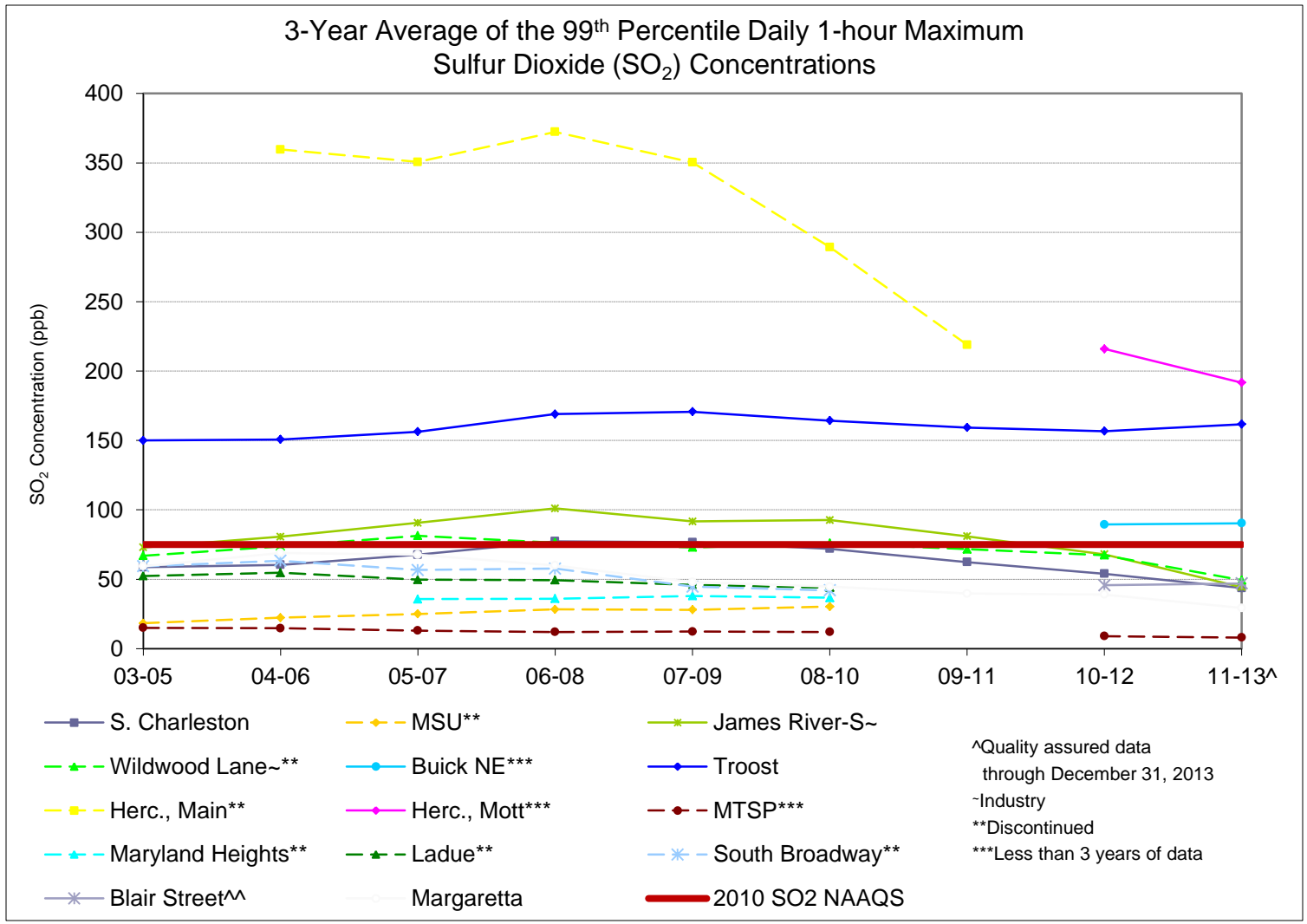
[^]Industry monitor

[^]Not a valid indicator due to data incompleteness

No violations of the 24-hour and annual NAAQS

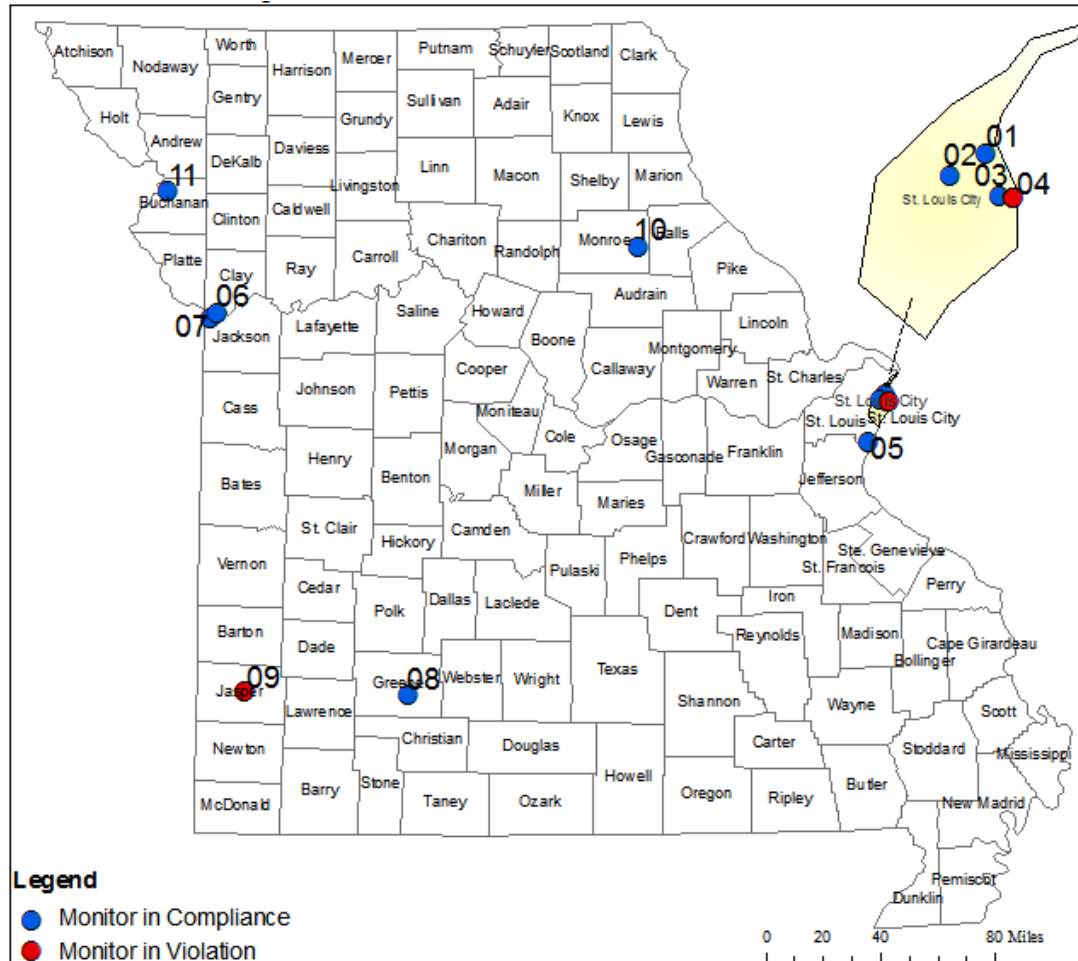


SO₂



Data Source: Environmental Protection Agency Air Quality System (EPA AQS), AMP480 Report

PM₁₀ Monitoring Network, 2013



Site# Site Name (11-13 # of Expected Exceedances*)

St. Louis Area, MO

- 01 Hall Street** (0.0)
- 02 Margaretta** (0.0)
- 03 Blair Street (0.0)
- 04 Branch Street** (**2.1**)
- 05 Oakville** (0.0)

Kansas City, MO

- 06 Troost (0.0)
- 07 Front Street** (0.0)

Springfield Area, MO

- 08 Missouri State University** (0.0)

Outstate Area

- 09 Carthage** (**1.9**)
- 10 Mark Twain State Park**^ (0.0)
- 11 St. Joseph Pump Station (0.0)

*Quality assured data through December 31st, 2013

**Continuous monitor.

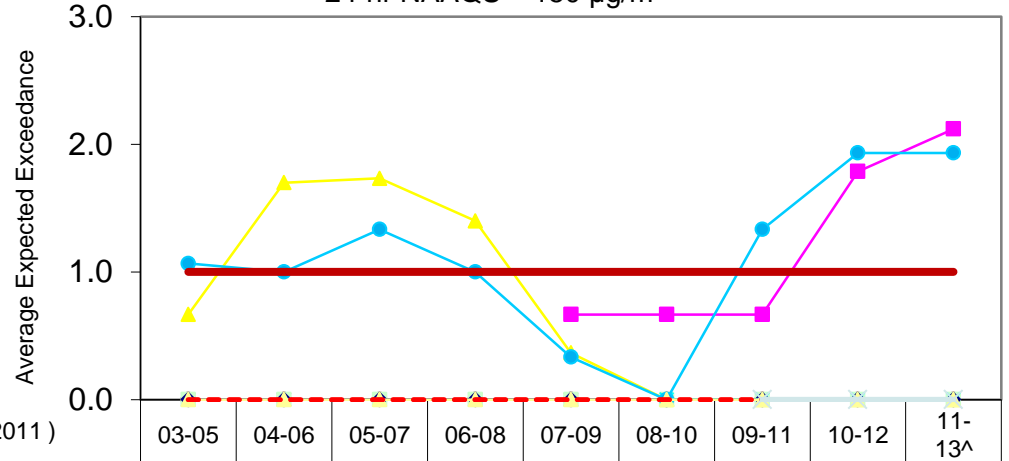
^Resumed sampling on 06/01/2011 as a continuous monitor.

Red & Bold: Violation of the 24-hour standard.

The 24-hour standard is attained when the expected number of exceedances is less than or equal to one (1) when averaged over three (3) calendar years.

PM₁₀

3-year Averages of the Expected Exceedance of the PM₁₀ 24-hour Standard
 24-hr NAAQS = 150 µg/m³



[^]Quality assured data through December 30, 2013

*Resumed monitoring (06/01/2011) as continuous monitoring

| | | | | | | | | | |
|--------------------------------|-----|-----|-----|-----|-----|-----|-----|-----|-----|
| Blair Street | 0.0 | 0.0 | 0.0 | 0.0 | 0.0 | 0.0 | 0.0 | 0.0 | 0.0 |
| Branch Street | | | | | 0.7 | 0.7 | 0.7 | 1.8 | 2.1 |
| Hall Street | 0.7 | 1.7 | 1.7 | 1.4 | 0.4 | 0.0 | 0.0 | 0.0 | 0.0 |
| Margaretta | 0.0 | 0.0 | 0.0 | 0.0 | 0.0 | 0.0 | 0.0 | 0.0 | 0.0 |
| Van Brunt | 0.0 | 0.0 | 0.0 | 0.0 | 0.0 | 0.0 | 0.0 | 0.0 | 0.0 |
| MSU | 0.0 | 0.0 | 0.0 | 0.0 | 0.0 | 0.0 | 0.0 | 0.0 | 0.0 |
| Mark Twain State Park* | 0.0 | 0.0 | 0.0 | 0.0 | 0.0 | 0.0 | 0.0 | 0.0 | 0.0 |
| Oakville | | | | | | 0.0 | 0.0 | 0.0 | 0.0 |
| Carthage-TEOM | 1.1 | 1.0 | 1.3 | 1.0 | 0.3 | 0.0 | 1.3 | 1.9 | 1.9 |
| St. Joseph Pump Station | 0.0 | 0.0 | 0.0 | 0.0 | 0.0 | 0.0 | 0.0 | 0.0 | 0.0 |
| Troost | 0.0 | 0.0 | 0.0 | 0.0 | 0.0 | 0.0 | 0.0 | 0.0 | 0.0 |
| Front | | | | | | | 0.0 | 0.0 | 0.0 |
| 3-yr Avg of the Exp Exceed =<1 | 1.0 | 1.0 | 1.0 | 1.0 | 1.0 | 1.0 | 1.0 | 1.0 | 1.0 |

Data Source: Environmental Protection Agency Air Quality System (EPA AQS), AMP480 Report, 03/17/2014

New Projects-Near-Roadway

- The second Near Roadway Monitoring in St. Louis at Rider Trail I-70 (Proposed for installation by September, 2014)
- Xact
 - continuous metals monitoring
 - supplement the NATTS PM₁₀ metals sampling
- The Sunset OC/EC Monitoring at Blair
 - Organic and Elemental Carbon Monitor Evaluation Project
 - Began 2011

Website Resources

- Air Pollutants Page: MDNR/Programs/Air Pollution Control Program/Program Links/Air Pollutants:

<http://dnr.mo.gov/env/apcp/airpollutants.htm>

- Design Value Reports
- Preliminary hourly data reports
- Monitoring Network Plans and More
- More improvements coming...

Division of Environmental Quality Director: Leanne Tippett Mosby

Date: May 15, 2014

Nothing in this document may be used to implement any enforcement action or levy any penalty unless promulgated by rule under chapter 536 or authorized by statute.